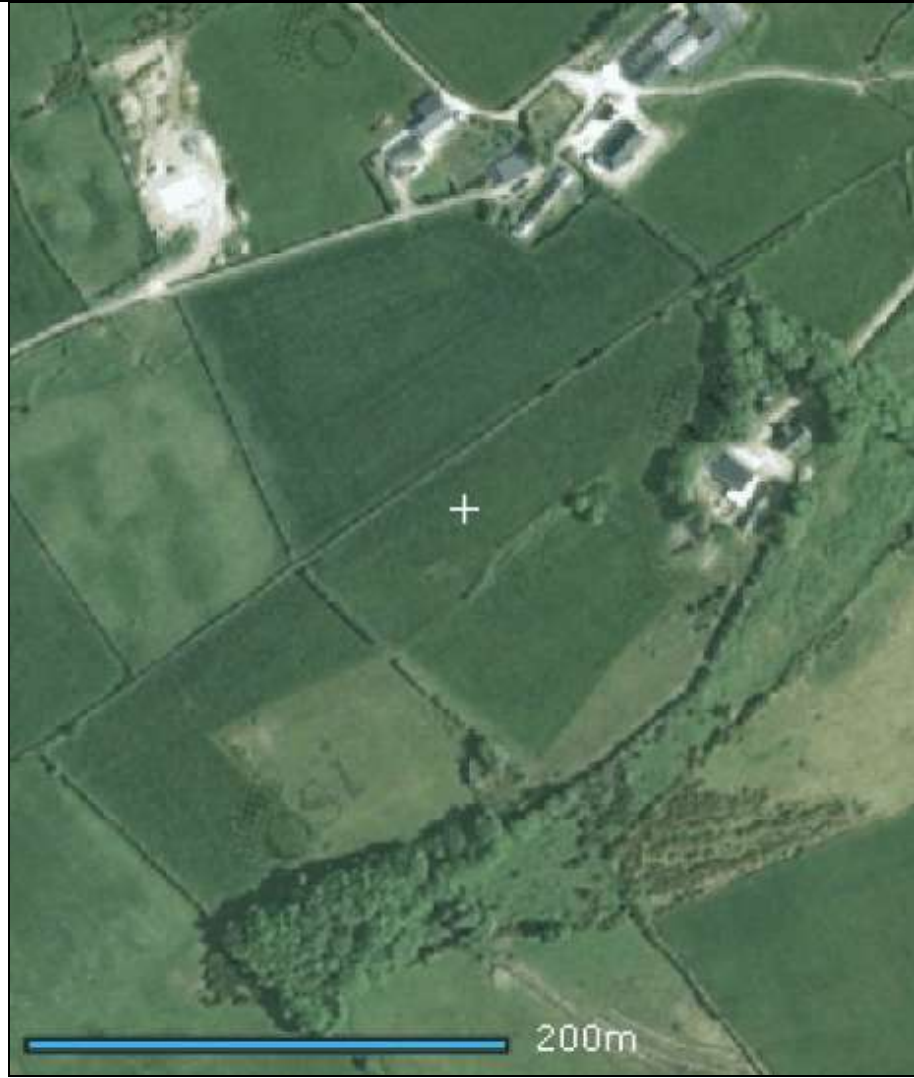
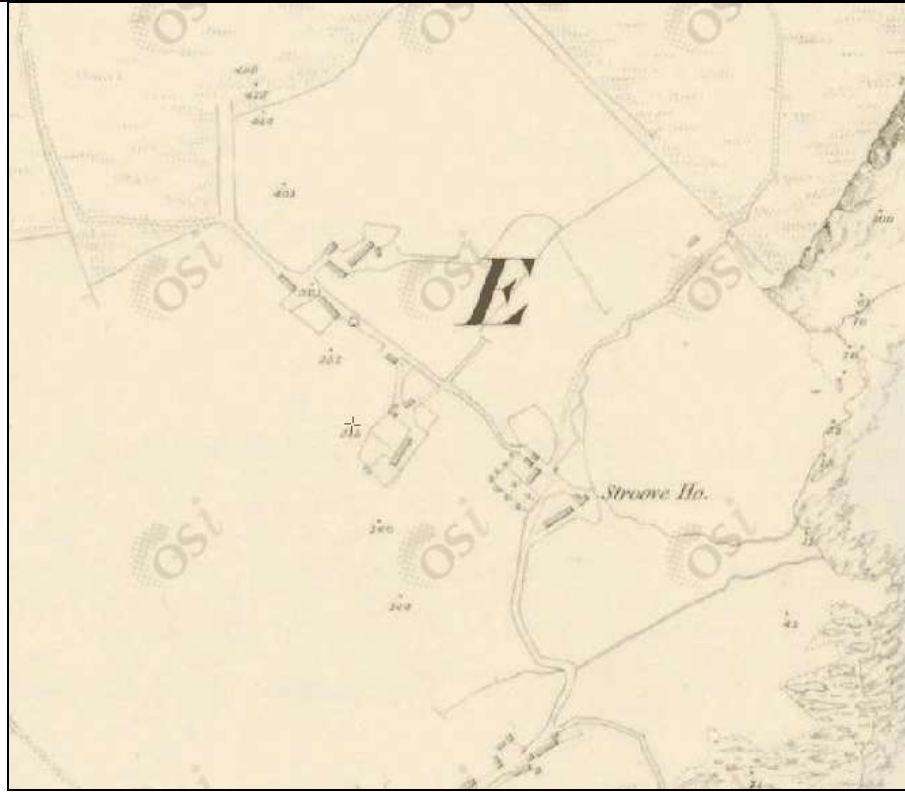


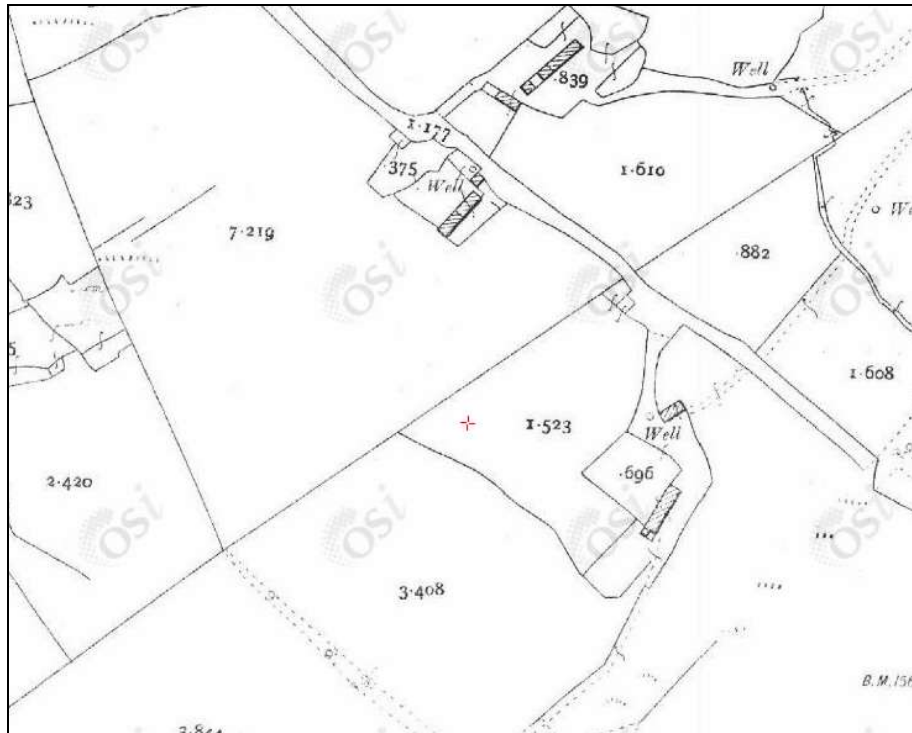
Asset Ref No.	Stroove: Rock-Cut Souterrain (DG013-006)	
Heritage Type	Built	
	<i>Souterrain</i>	
Location	OS 6-inch map sheet	
	Townland	Stroove
	Parish	Moville Lower
	LCA	Inishowen Head to Quigley's Point
	ITM Coordinates	667676/943237
	NG Coordinates	267738/443255
Protection Status	RMP	
Condition	Some remains	
Ownership (if known)		
Site Description	<p>Several ridges of rock outcrop occur in this field. In one of these is a rock-cut souterrain. (M. R. Colhoun). It consists of an entrance shaft 0.8m in diameter and 2.5m deep. To the NE of this is a passage 6m long, 0.95m wide and 1.5m high. The entrance to this from the shaft is 0.8m wide and 1.9m high. A small opening 0.4m wide and 0.42m high connects this to the SE chamber. The SE chamber is entered through an opening 0.6m wide and 0.85m high. There is a step down into the chamber which is 3.6m long and 1.2m wide except for a SW outshot which increases the width to 1.55m. The maximum height is 1.3m. It is situated on high pasture in a naturally terraced field sloping to the SE.</p>	
Landscape Context (setting)	Set within good grazing land, approximately 8km northeast of Moville.	
Site Appraisal	<p>Although there are 130 recorded souterrains in Co. Donegal, this site is unusual in that it is rock cut and also is one of only two souterrains on the eastern side of the Inishowen peninsula (the other DG022-009 was found during archaeological testing at Eleven Ballyboes).</p>	
Sensitivity	Souterrains being subterranean are not usually sensitive to human interference so long as their passages are blocked (which is common in grazing area).	
Associations	<p>This site is located approximately 3km northeast of DG022-009, which was found during archaeological testing at Eleven Ballyboes. It may also have been associated with an enclosure (DGG013-009) located approximately 1.5km southwest in the townland of Carrowtrasna.</p>	
Recommendations		



Location Map – close up (www.archaeology.ie)



1st edition OS map c. 1830 (www.osi.ie)



2nd edition OS map c. 1905 (www.osi.ie)

References	Lacey, B. (1983) Archaeological Survey of County Donegal.
Plates	
Additional Notes	