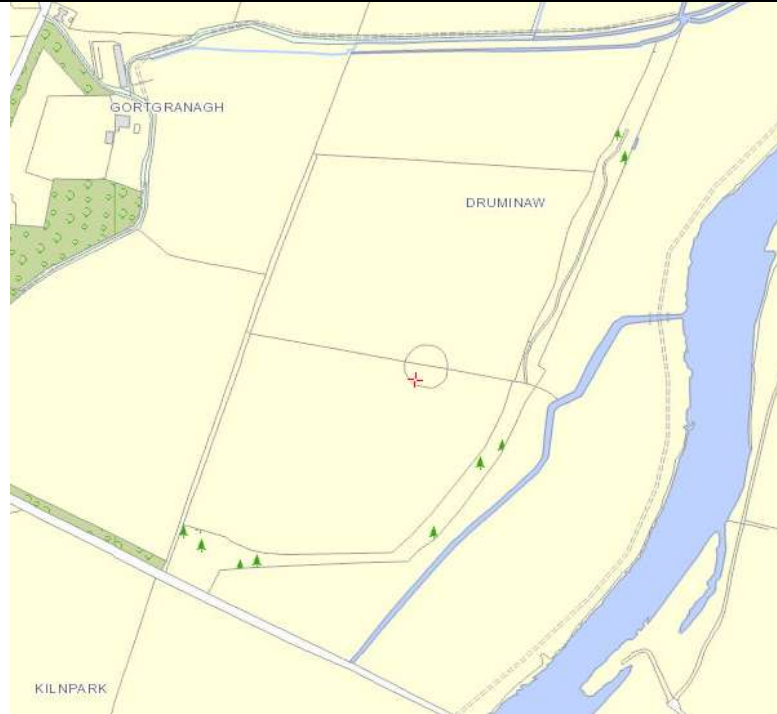


Asset Ref No.	Druminaw: Ringfort (DG071-001)	
Heritage Type	Built	
	<i>Early Medieval Site</i>	
Location	OS 6-inch map sheet	071
	Townland	Druminaw
	Parish	Clonleigh
	LCA	River Deelee to Lifford
	ITM Coordinates	634253, 901249
	NG Coordinates	234308, 401258
Protection Status	RMP	
Condition	Fair	
Ownership (if known)		
Site Description	<p>Description: Internal diam. 41.5m. A circular area enclosed by a low earthen bank, containing some stone, surviving only .5m in height, and a shallow fosse .75m in width. There are many gaps in the bank but none definitely an entrance. The interior is featureless except for the stumps of felled mature trees. The latter plus the insubstantial nature of the bank might indicate a late date for the feature. A field boundary bisects the site E-W. It is situated on a low N-S ridge of land parallel to and in the flood plain of the River Foyle to the E.</p>	
Landscape Context (setting)	<p>Sited on a low N-S ridge of land parallel to and in the flood plain of the River Foyle to the E. Island Beg indicated on the 1st ed OS map, has been reclaimed and is now a body of land located east/southeast of the site.</p>	
Site Appraisal	<p>In fair condition, this site is located adjacent the River Foyle and is clearly depicted on aerial photography.</p>	
Sensitivity	<p>The site has been subject to field boundary division and been bisected. The earthen features have suffered erosion (possibly through agricultural activities).</p>	
Associations	<p>Clonleigh House located to NW, indicated on 1st and 2nd ed OS maps</p>	
Recommendations	<p>This site is in fair condition, relatively easily accessible and has fair tourist potential in terms of individual and/or group experience as well as demonstration qualities for training purposes to groups etc.</p>	

Mapping



Present-day mapping extract (www.osi.ie)



Present-day aerial view extract (www.osi.ie)



Extract from 1st edition OS map (1820-1840)



Extract from 2nd OS map (1890s - 1900s)

References

<http://www.archaeology.ie>

Plates	
Additional Notes	