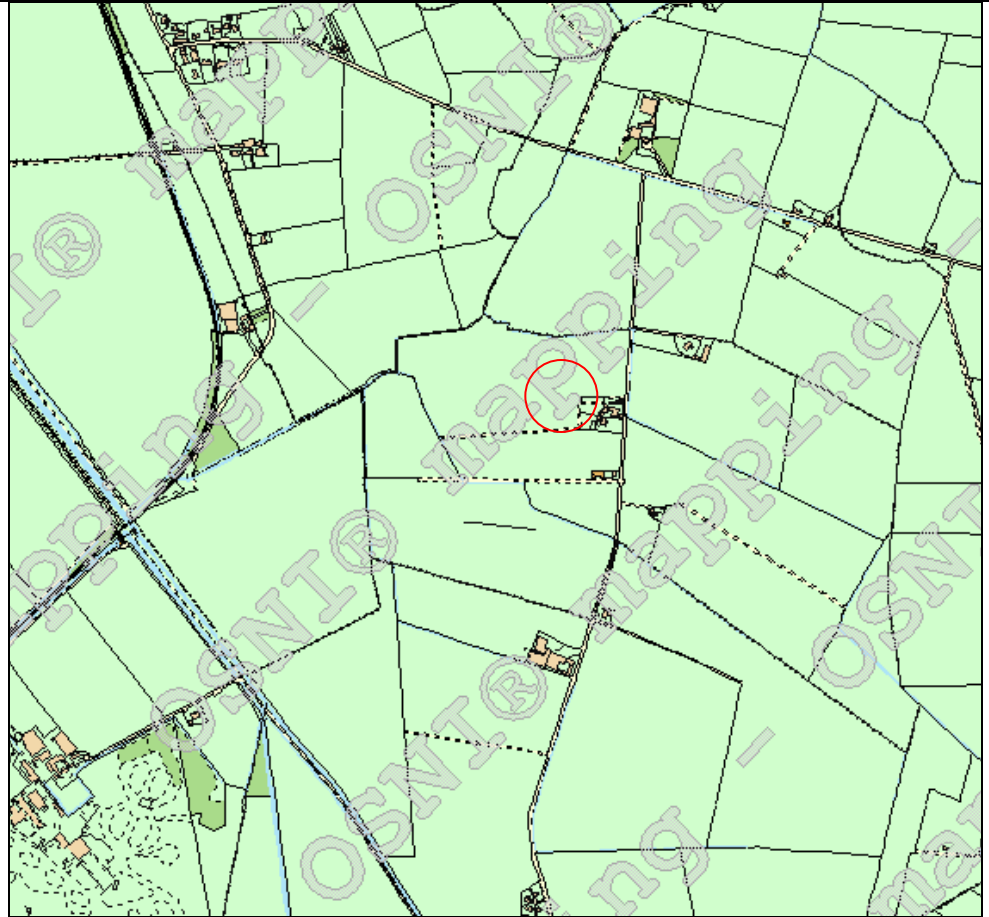
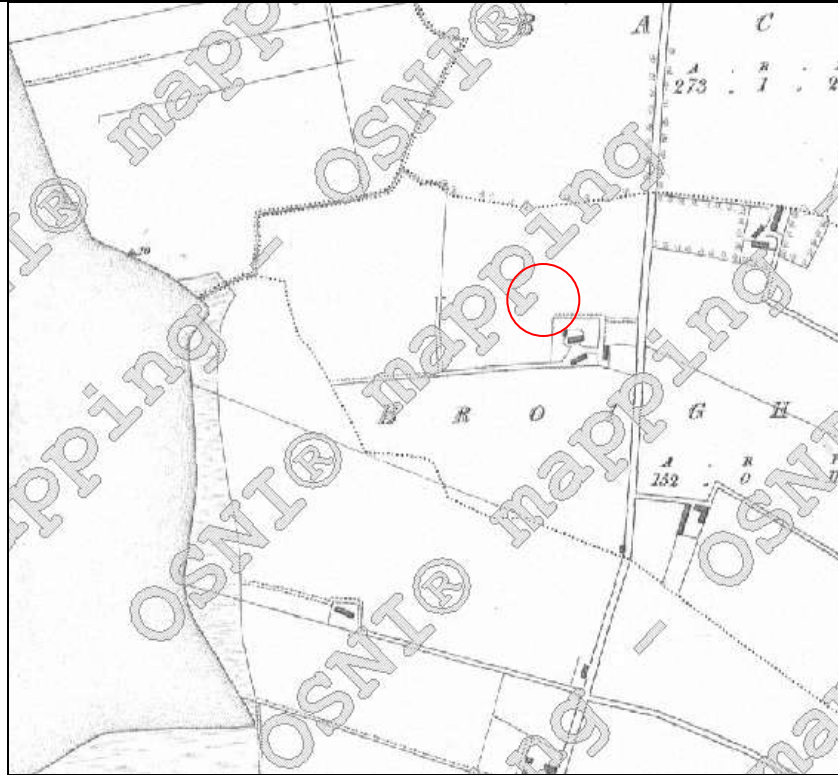


<b>Asset Ref No.</b>	<b>LDY009:008 Findspot: Broighter Hoard</b>	
<b>Heritage Type</b>	Built	
	<i>Prehistoric early Iron Age artefacts</i>	
<b>Location</b>	OS 6-inch map sheet	009
	Townland	Broighter
	Parish	Tamlaght Finlagan
	LCA	Foyle Alluvial Plain
	ITM Coordinates	264650, 425760
	NG Coordinates	C6465025760
<b>Protection Status</b>	SMR	
<b>Condition</b>	Findspot	
<b>Ownership (if known)</b>	State owned	
<b>Site Description</b>	<p>This hoard of beautifully worked gold objects was found by a farmer while ploughing in 1896. It contains a highly decorated, thick gold neck torc, a bowl, 2 necklaces made of twisted ropes of gold, 2 bar torcs &amp; an exquisite gold model of a boat, complete with benches, oars &amp; mast. They were probably deposited some time after 100 B.C. The hoard is now on display in the National Museum, Kildare St., Dublin. See SM7 for further details &amp; photographs of the hoard.</p>	
<b>Landscape Context (setting)</b>	Found during ploughing in Broighter townland.	
<b>Site Appraisal</b>	This is an SMR site.	
<b>Sensitivity</b>	The finds are removed from their original findspot and housed in NMI Dublin.	
<b>Associations</b>		
<b>Recommendations</b>	<p>Cochraner, JRSAL, Vol. 32, 1902, 212-224  OS Field Report No. 40  Raftery, B., 184, 181-9</p>	

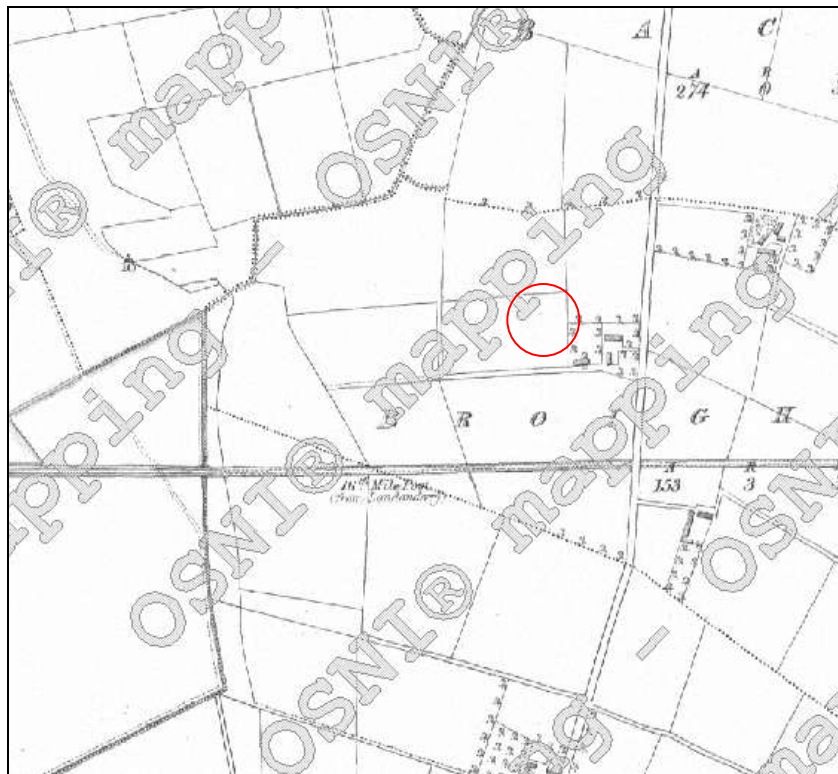
Mapping



Present-day mapping extract ([www.osni.gov.uk](http://www.osni.gov.uk))



1<sup>st</sup> edition 6-inch OS map extract 1829 – 1835



2<sup>nd</sup> edition 6-inch OS map extract 1834 - 1904



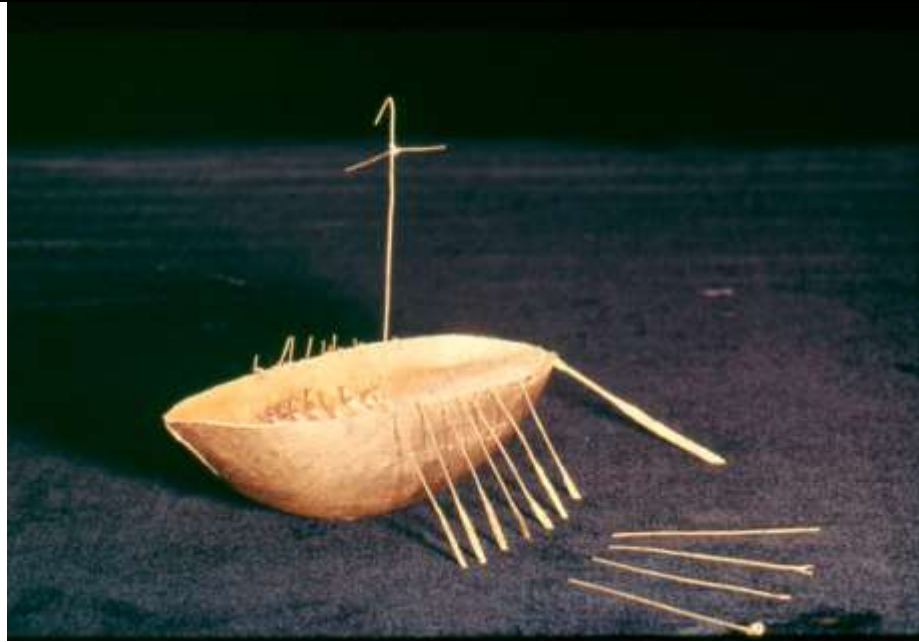
Extract from NIEA SMR MapViewer of the site (Map ID No. 1)

**References** <http://maps.ehnsi.gov.uk/MapViewer/Default.aspx>

**Plates**




Broighter Hoard: Full collection



**Broighter Hoard: Miniature boat**



**Broighter Hoard: Broighter Collar**

		
	<b>Broighter Hoard: Necklace</b>	
<b>Additional Notes</b>	n/a	