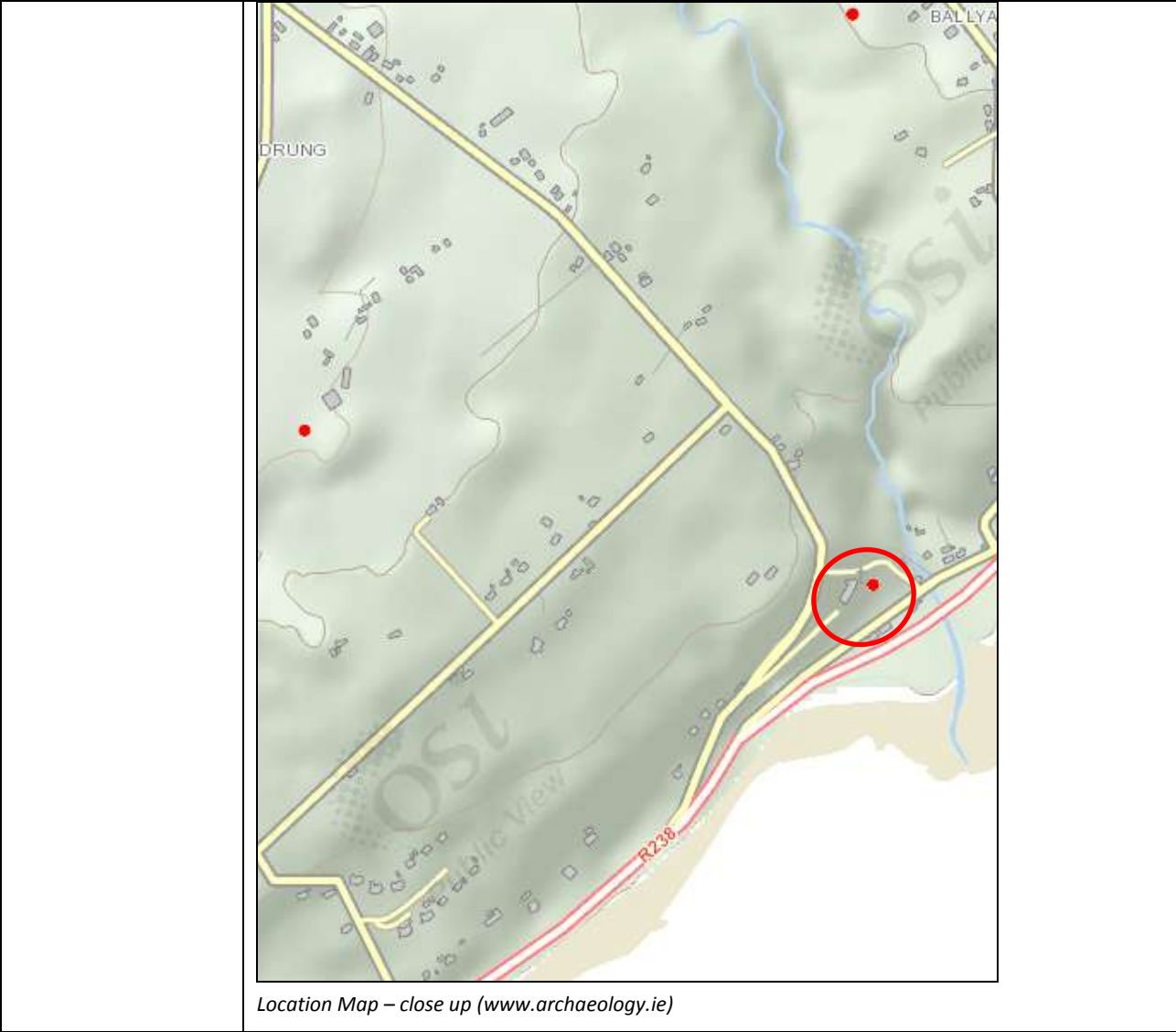


Asset Ref No.	Drung: St Columba's Church (NIAH & RPS 40903104)	
Heritage Type	Built	
	St. Columba's Church 1865 - 1875	
Location	OS 6-inch map sheet	DG022
	Townland	Drung
	Parish	Moville Upper
	LCA	Inishowen Head to Quigley's Point
	ITM Coordinates	653744/934057
	NG Coordinates	253803/434073
Protection Status	NIAH & RPS	
Condition	Substantial remains	
Ownership (if known)	Civil Parish of Moville Upper	
Site Description	<p>Detached five-bay single-storey Catholic church built 1871 with polygonal chancel, bellcote to south-west gable and projecting sacristy to northern corner. Double-pitch purple slate with bands of green slate to timber rafters exposed at eaves, with carved ashlar bellcote with wrought iron finial cross, cast-iron rainwater goods; ashlar chimney to hipped sacristy roof. Coursed rubble with tooled ashlar quoins to buttresses to south-west gable and tooled ashlar plinth and string courses, pyramidal carved ashlar finials to buttresses. Leaded stained glass with weatherglazing in shlar trifoliated paired lancet arches, timber matchboard double doors in lancet-arched opening with chamfered ashlar surround and hood moulding over, timber matchboard sacristy door with haunched ashlar lintel, Graveyard surrounding with memorial stones, ruins of former church to north-east; detached toilet block, rubble stone boundary walls. Tooled stone has distinct corouroy pattern, belfry evokes Timothy Hevey as architect but Williams asserts that this is not so. M includes leaded stained glass, natural slate cast-iron rainwater goods, wrought iron finial cross, etc.</p>	
Landscape Context (setting)	Located approximately 1.5km southwest of Redcastle, to the south of R238 road overlooking Lough Foyle	
Site Appraisal		
Sensitivity	This site is not very sensitive to damage, although it is still in use.	
Associations	Located within Drung Burial ground (DG31-005001), which incorporates a possible ringfort (DG-031-005)	
Recommendations		

Mapping



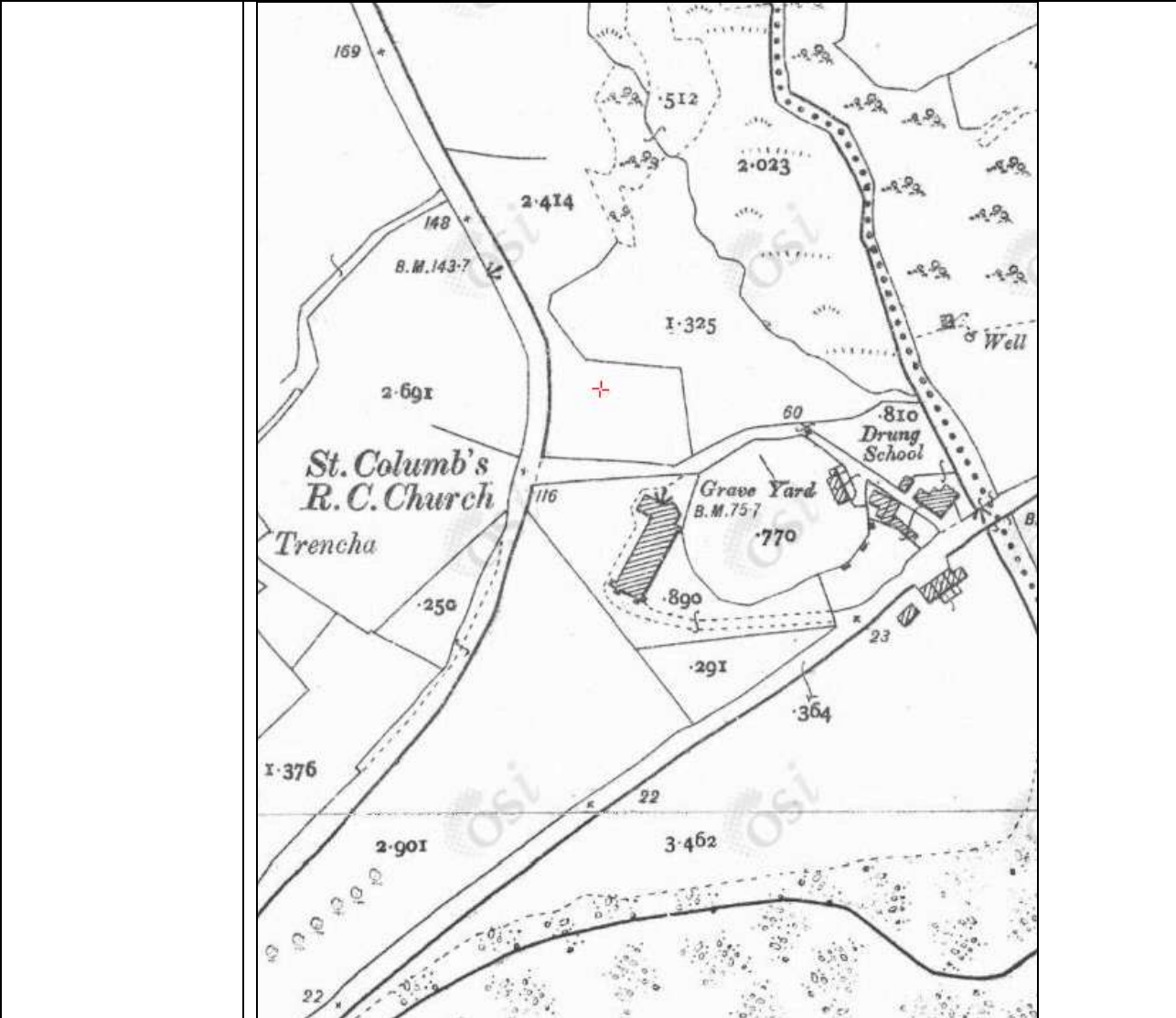
Location Map (www.archaeology.ie)



Location Map – close up (www.archaeology.ie)



1st edition OS map c. 1830 (www.osi.ie)



2nd edition OS map c. 1905 (www.osi.ie)

References	NIAH Survey 1996
Plates	
Additional Notes	