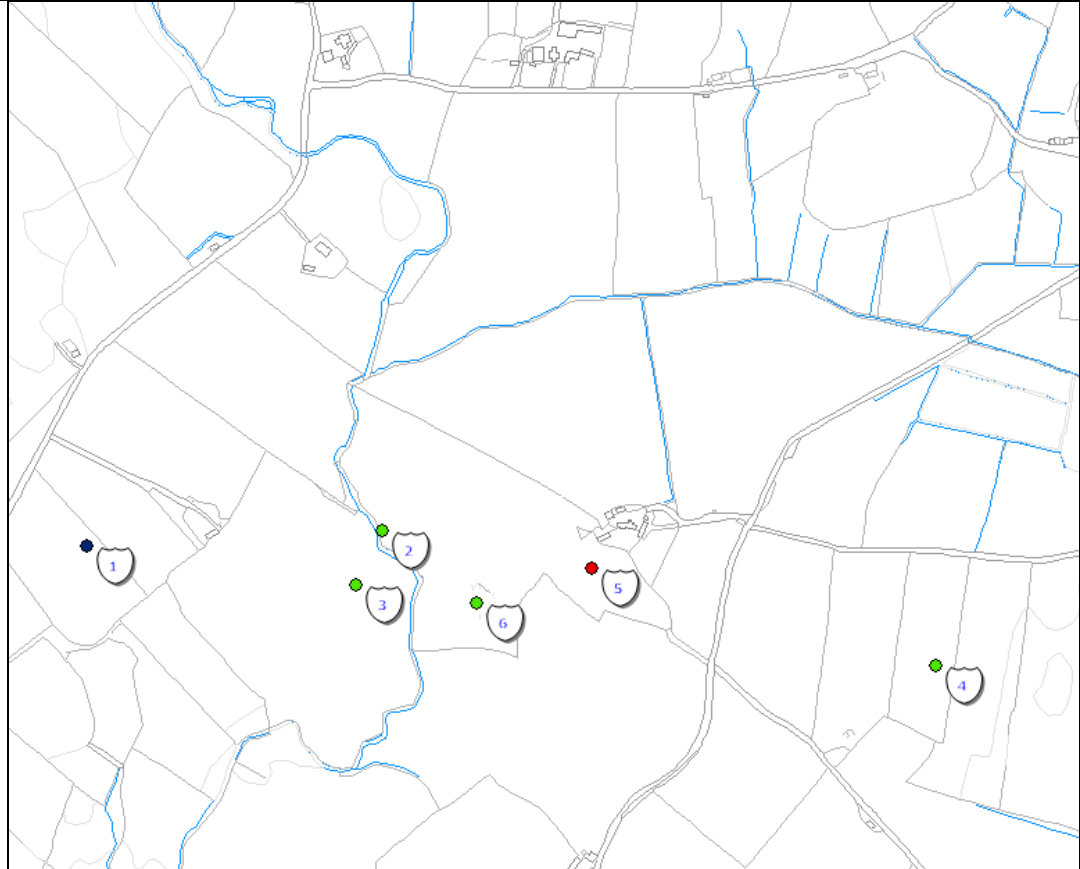
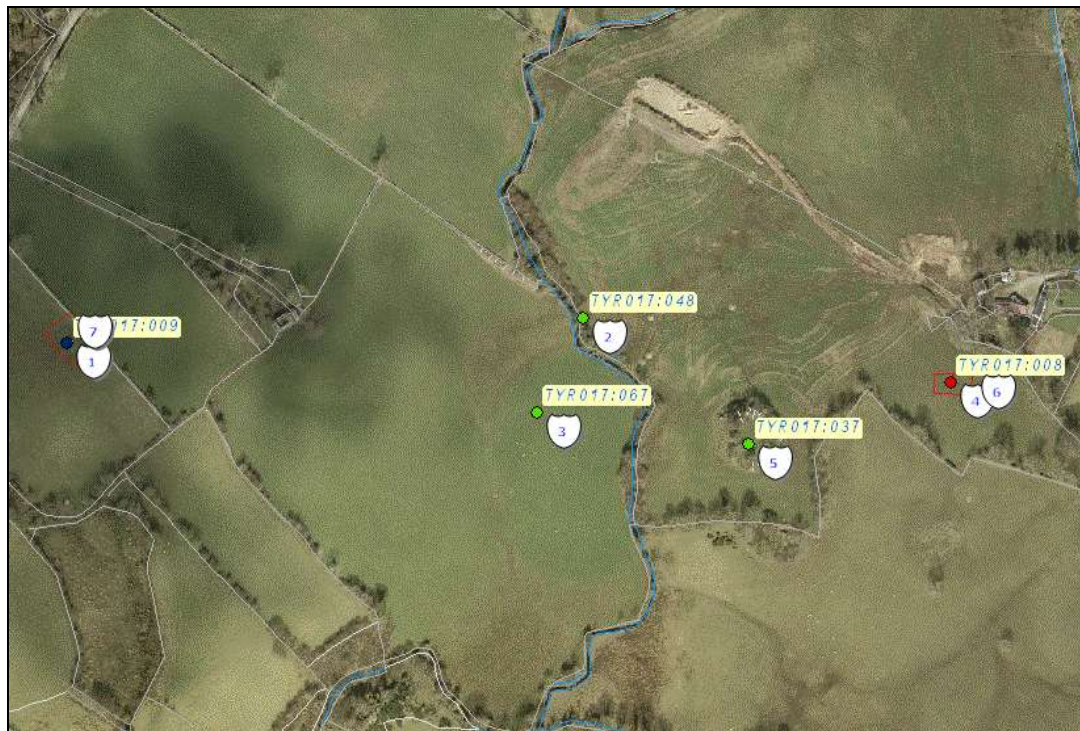


Asset Ref No.	TYR 017:008 Portal Tomb & Portal Tomb TYR 017:009	
Heritage Type	Built	
	Megalithic Tombs	
Location	OS 6-inch map sheet	TYR 017
	Townland	Crosh & Glenknock Or Cloghogle
	Parish	Ardstraw
	LCA	Foyle Valley
	ITM Coordinates	
	NG Coordinates	H4174587919 & H4117987944
Protection Status	<i>SMR; Scheduled Area</i>	
Condition	<i>Good</i>	
Ownership (if known)	(TYR 017:009) State care	
Site Description	<p>On the N side of a low hill, with the ground falling away to N & W. The site is orientated E & is 6m long. It consists of 2 massive portal stones & 3 slipped capstones. The remains of a cairn extend out form c.4.5m on the S side. The N portal is 2.5m high, 1.7m long & 0.9m wide & the S portal is 2.2m high x 2.2m long x 1.2m wide. Capstone 1 is 1.2m x 1.2m x 0.35m thick, capstone 2 is 2m x 2.8m x 0.6m thick & capstone 3 is 1.8m x 1.6m x 0.3m thick. There is a blocking stone between the portals & the chamber. Only one side stone of the chamber, at S, remains; the N side stone may be underneath the fallen capstones. There is no sign of a back stone.</p> <p>In Flattish ground falling away to S. The tomb is orientated N-S. The chamber is defined by 2 portals & a backstone, with the capstone broken quite recently, probably during agricultural reclamation close to the site.</p>	
Landscape Context (setting)	<i>Located approximately 3km north-northeast of Newtownstewart, on moderate pastureland. These sites are situated on slightly elevated areas of 90m OD either side of the Glenknock Burn. The area contains a number of other archaeological sites also (see below).</i>	
Site Appraisal	These sites are a scheduled sites and TYR017:009 is in State Care , which are an indication of their significance to the archaeological record of Northern Ireland.	
Sensitivity	<i>These sites is located in pastureland, thus although not likely to be interfered with by ploughing it may be disturbed by grazing animals.</i>	
Associations:	<i>These contemporary sites are directly associated and area in-directly associated with a Mass Rock (TYR 017:067); a standing stone (TYR017:072); an enclosure (TYR 017:048) and a Cashel (TYR 017:037).</i>	
Recommendations	<i>These sites can be accessed from the Gallan Road to the west and the Carnargan Road to the east. These sites and the associated sites combined have a very high visitor potential.</i>	

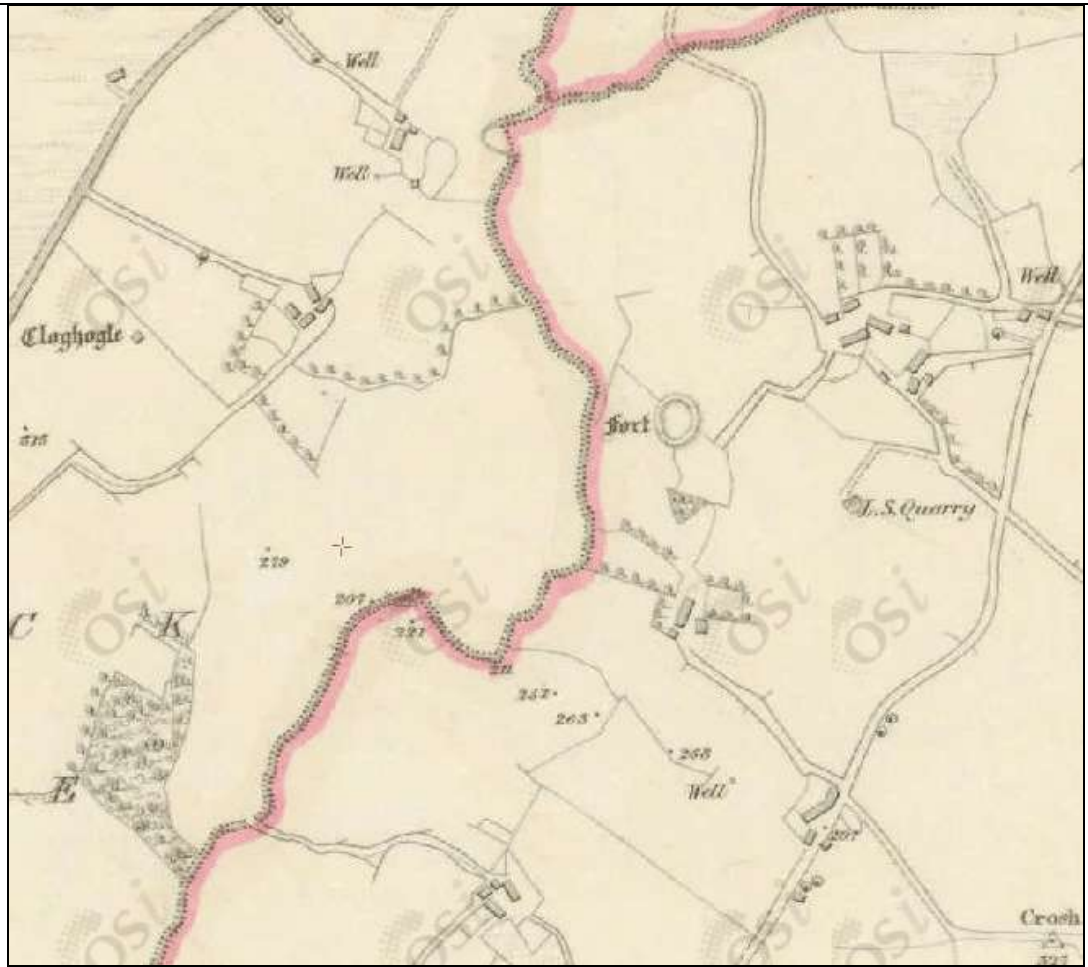
Mapping



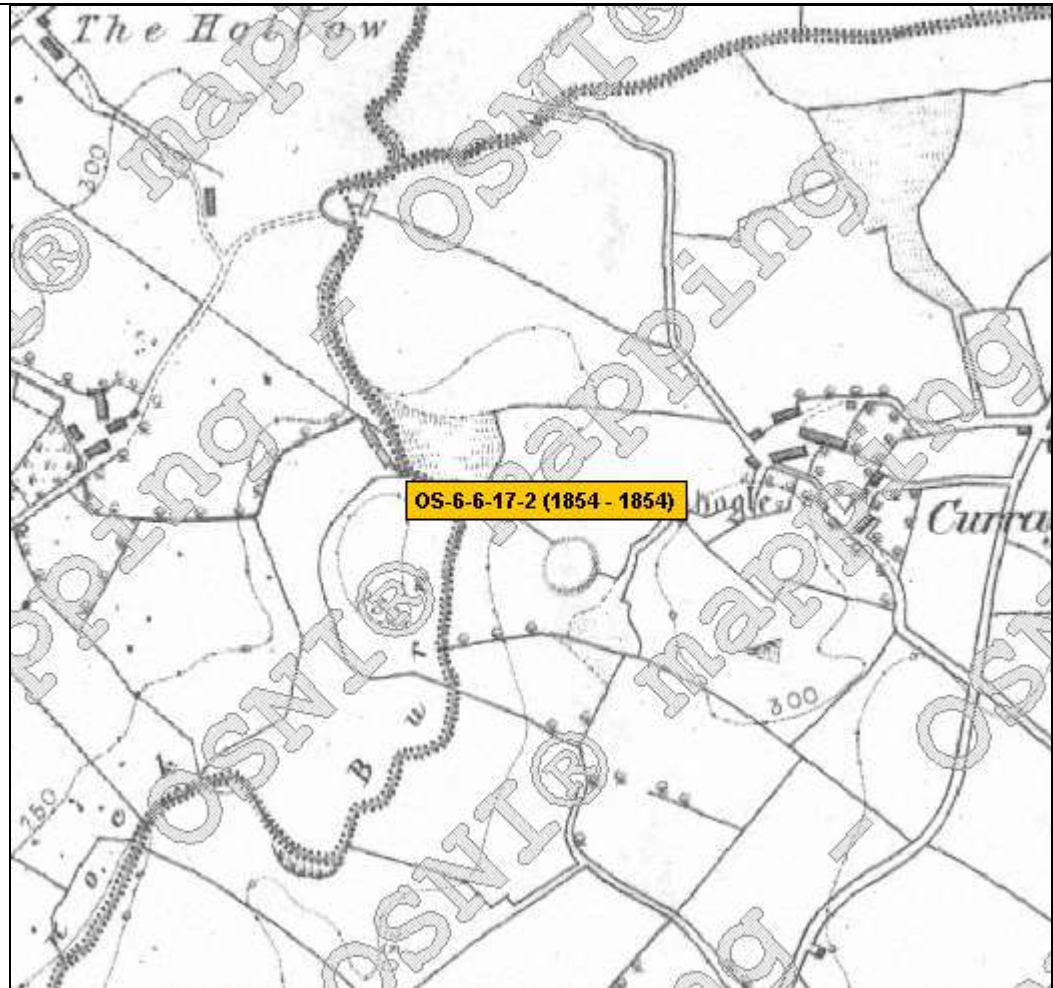
NIEA SMR map: TYR 017:008 is marked as no. 5, TYR017:009 is marked as no.1



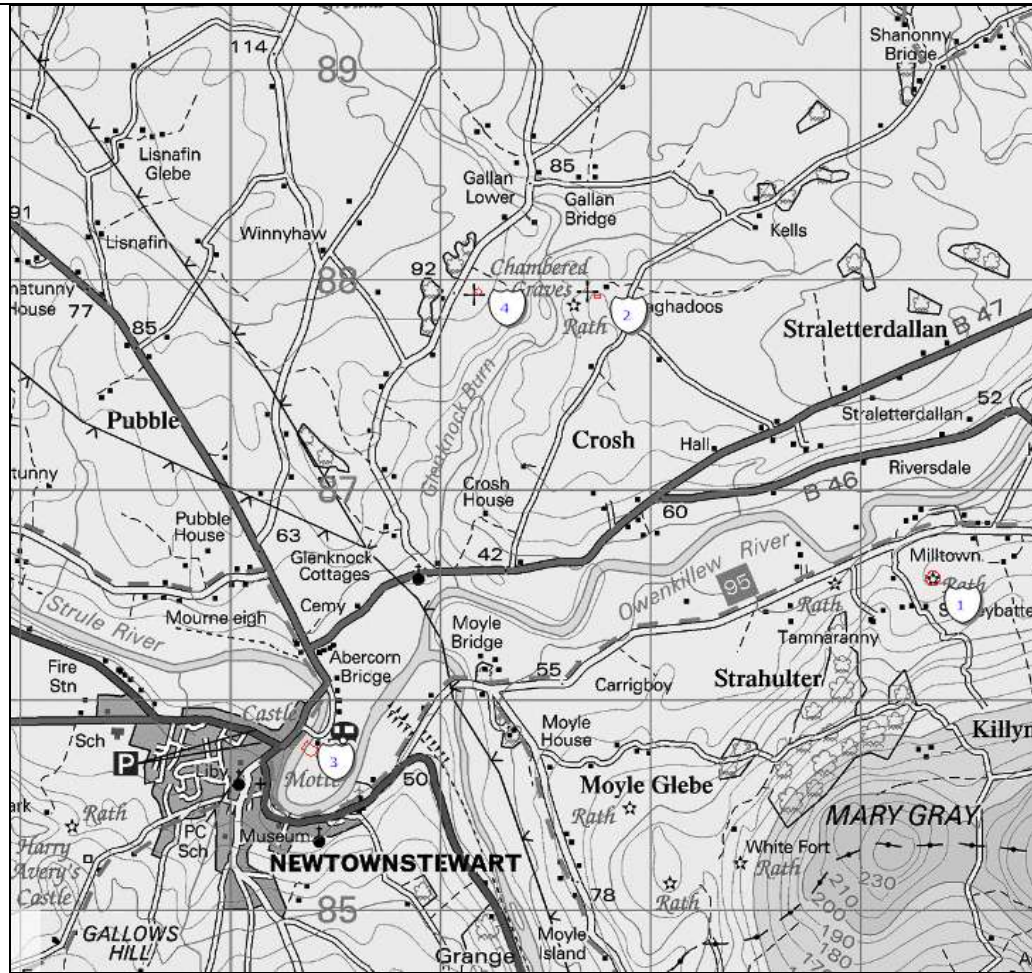
NIEA SMR map: TYR 017:008 is marked as no. 4/6, TYR017:009 is marked as no.1/7



1st ed OS Map extract (1829-1842)(www.osi.ie)



2nd ed OS Map extract (1854)(www.osni.gov.uk)



OSI 1 to 50,000 Discovery Series Map extract (NIEA Map Viewer) TYR 017:008 is marked as no. 2, TYR017:009 is marked as no.4

References	NIEA SMRs
Plates	
Additional Notes	