


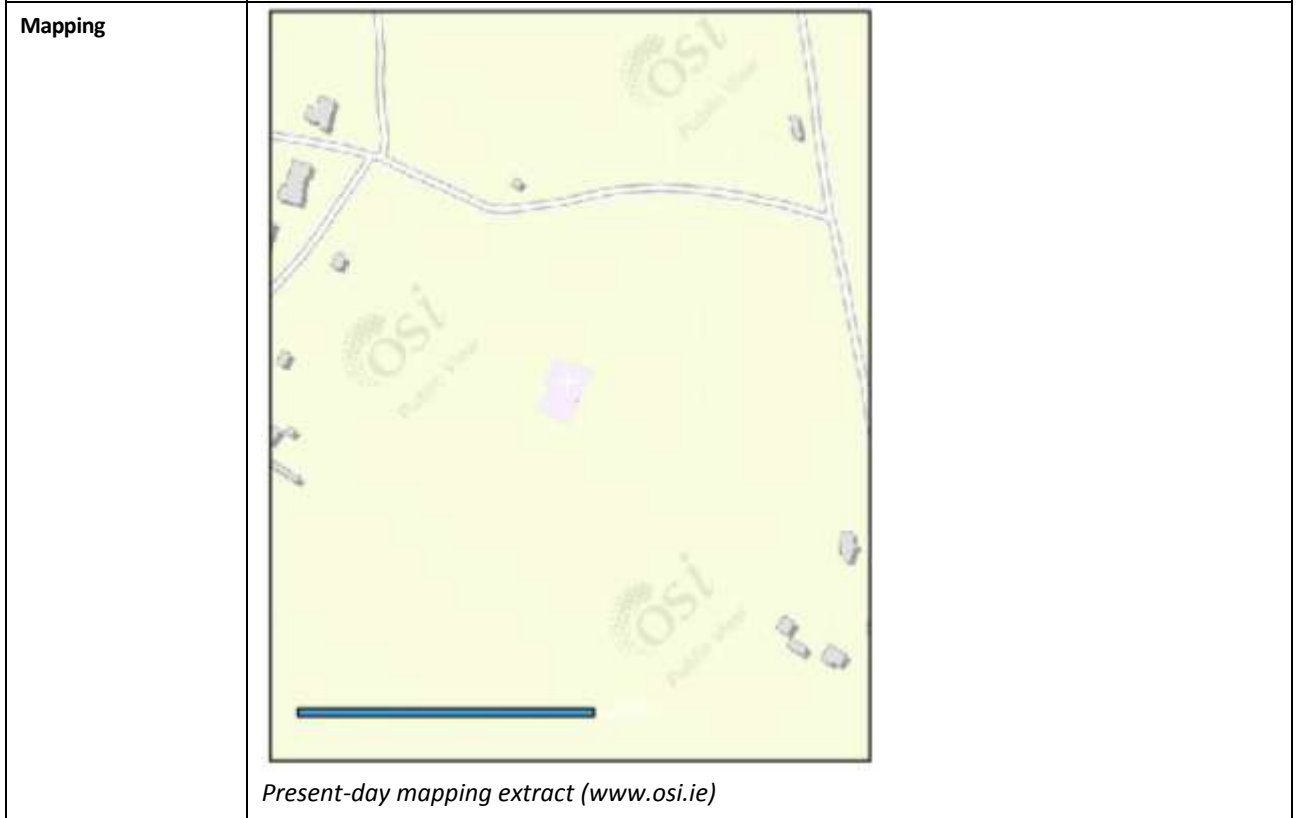
Asset Ref No.	Tromaty: Burial Ground (DG030-010)	
Heritage Type	Built	
	<i>Poss Medieval Site</i>	
Location	OS 6-inch map sheet	030
	Townland	Tromaty
	Parish	Moville Upper/Muff
	LCA	Quigleys Point – Burnfoot
	ITM Coordinates	649324, 931263
	NG Coordinates	249382, 431279
Protection Status	RMPs	
Condition	Good	
Ownership (if known)		
Site Description	Description: The Calluragh marked on the 2nd and 3rd editions of the OS 6-inch maps consists of a rectangular area sunk c. 0.5m below the outside surface and enclosed by a drystone wall. The interior is strewn with stones some of which seem to assume articulate patterns but it is difficult to be certain. It is located in grazing land sloping to Lough Foyle.	
Landscape Context (setting)	Sited on good pastureland, with good views over Lough Foyle and the LCA area.	
Site Appraisal	Possible medieval origins, named ‘The Calluragh’ (derived from <i>Ceallúrach</i> meaning graveyard, cemetery, burial ground) on 2 nd and 3 rd OS maps. Distinctive sunken ground/area, of unusual type. Marked on Griffiths Valuation but within occupied and leased lands (6 on map and table below):	
		

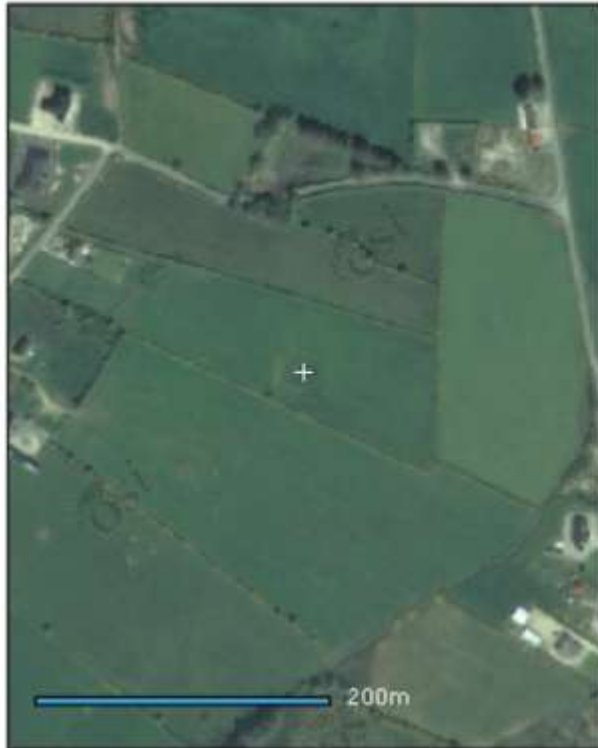
No. and Letters of Reference to Map.	Names.		Description of Tenement.	Area.	Ratesable Annual Valuation.		Total Annual Valuation of Ratesable Property.
	Townlands and Occupiers.	Immediate Lessors.			Land.	Buildings.	
				A. R. P.	£ s. d.	£ s. d.	£ s. d.
TROMATY— continued.							
2 A	}	John Logue, . . .	Anne Loughry, . . .	Land,	0 2 5	2 10 0	} 5 15 0
- B				Land,	11 1 20	2 15 0	
3 A	}	James Logue, . . .	Same,	House and offices,	14 2 10	2 15 0	} 4 15 0
- B				House, offices, & land,	10 1 0	1 10 0	
4	}	Unoccupied,	James Logue,	House,	—	0 10 0	} 0 10 0
- B				Unoccupied,	—	—	
5	}	Bernard Curran,	Anne Loughry,	Land,	15 3 10	5 0 0	} 5 0 0
- B				House,	—	—	
6	}	Unoccupied,	Bernard Curran,	House, office, and land,	10 3 5	3 0 0	} 3 10 0
- B				House,	—	—	
7 A	}	Abraham Dogherty,	Anne Loughry,	House,	—	0 5 0	} 0 5 0
- B				House, office, and land,	11 1 20	4 10 0	
8	}	Grace M'Cullagh,	Abraham Dogherty,	House,	15 0 10	6 5 0	} 11 0 0
- B				House, office, and land,	17 3 20	3 15 0	
9	}	Neal Quigley,	Anne Loughry,	House, office, & land,	21 0 30	4 15 0	} 5 10 0
- B				House, office, and land,	23 1 20	6 0 0	
10	}	Stephen Quigley,	Same,	House, offices, and land,	48 1 10	13 0 0	} 14 5 0
- B				House, office, and land,	—	—	
11		National School-house, garden, & play-ground,	(See Exemptions).	Land,	20 1 35	8 10 0	

Sensitivity No immediate threats recognised.

Associations It is possible that this site has a medieval origin however it is not indicated on the 1st ed OS. Marked as 'The Calluragh' on 2nd and 3rd OS mapping. Two megalithic (unclassified) tombs located a short distance to the west (DG030-008--- and DG030-009---) (marked as 'Rocks' on 1st ed OS). No apparent church associations.

Recommendations This site is relatively easily accessible (near roadside) and is of unusual sunken type. It has fair tourist potential on both individual/group experience tourism levels and also offers good demo site qualities for training/education purposes. The site also may merit future research and ground surveys to determine if there are any built associated structures like a church, quantity/layout of burials etc.






Present-day aerial view extract (www.osi.ie)



Extract from 1st edition OS map (1820-1840)

	 <p data-bbox="479 787 909 819"><i>Extract from 2nd OS map (1890s - 1900s)</i></p>
References	http://www.archaeology.ie
Plates	
Additional Notes	