



LIVING CITY PROJECT



BISHOP STREET PHOTOGRAPHIC RECORD



Supported by
Derry City Council

Prepared by Prehen Studios
Prehen House, Londonderry/Derry



Address	4-8 Bishop Street
Name	None
Map Reference	01
Plot Number	53,54
Listed Building Reference Grade	No N/A N/A
Conservation Area Reference	Yes Historic City
Building at Risk Reference	No N/A
Date of Construction	
Original Use	Retail
Present Use	Retail

Description

Two-storey, three-bay building with curtain walling system to front elevation. Flat roof concealed behind parapet. Contemporary shopfronts.

Owners/Tenants

1832	Thomas Mulholland
1858	Mulholland & Co.
1871	Joseph Mulholland
1879-1918	Mulholland & Co.
2006	Celtic Collection, Barnardo's

Derry Almanac

Archive Articles

M. MULHOLLAND & CO.
NEW BUSINESS PREMISES IN BISHOP-STREET AND
PUMP-STREET.

The above old-established firm have just completed the erection of what may be called a new business establishment in Bishop-street and Pump-street, which, for extent, completeness, and general appearance, is unrivalled in the North of Ireland, and is one of the most extensive modern business premises in the same. Established in the year 1819, the business of Mulholland & Co. has been carried on during two generations, during which it has maintained a high character, and ranked as one of the foremost establishments of the kind in the province. In 1837 it was noticed in the Ordnance Survey as a proof of the growing opulence of the city, and its dimensions were given at that period as 120 feet in depth, by 24 feet wide. But with the increasing prosperity of Derry, and the extended commercial relations of the city with the large and important district of which it is the capital, the "spacious and handsome" shop of 1837, even with extensive additions made from time to time in its rear, became totally inadequate to meet the requirements of the business, which was still further increased by the addition of an important wholesale trade. Messrs. Mulholland & Co. having recently purchased extensive premises adjoining their own in Bishop-street, extending back towards Pump-street, decided to erect an entirely new establishment in Bishop-street, and connected therewith a dwelling-house in Pump-street, for the accommodation of the numerous employes of the firm. The site at their disposal extended 260 feet in depth, from Bishop-street to Pump-street, with a frontage of 60 feet on the former street and 36 on the latter. Little more than a year ago the firm, after consulting with, and receiving plans from several architects, some of them of known eminence, selected the designs of our townsman, Mr. J. Guy Ferguson, C.E., as being best adapted to their requirements and most pleasing to their taste. Tenders were invited, and Mr. Joseph Ballantine, of Strand-road, became the contractor. One indispensable condition of the contract was that the business should be undisturbed during the progress of the works until after the completion of the northern section of the new premises. Thanks to the plans and foresight of the architect and the energy of the contractor, this stipulation was satisfactorily observed, the single span roof of sixty feet, with all its pendentives and intricate framing, being actually constructed and covered, over the old establishment, which it enclosed, and in which the business was carried on as usual, without accident, and with but partial inconvenience, until the date of its removal into the section of the new premises prepared for its reception. A more detailed description of this important establishment may not be uninteresting.

The PUMP-STREET HOUSE has a pleasing elevation, executed in Portland cement. The front portion of the building contains on its principal floors the residence of Mr. Mulholland, for whose convenience it is arranged with a private entrance and corridors. On the third and attic storeys are the lofty and well-lighted dormitories of the young men of the establishment. There is an extensive return building with side yard and gate entrance, by means of which goods can be conveyed to and from the packing and

forwarding rooms in the rear of the front establishment. The "return" contains the necessary culinary apartments and domestic offices, and a spacious dining-hall which communicates immediately with the gallery floor of the shop by means of a covered passage, which also forms a cloak-room. This portion of the premises comprises bath rooms and all necessary lavatory accommodation, and nothing has been omitted by the firm that could contribute to the comfort and convenience of their employes.

THE BISHOP-STREET ESTABLISHMENT has a frontage of sixty feet by an extreme depth of one hundred and fifty feet. The elevation, which has an altitude of fifty feet, is very effective and handsome. It is in three storeys, marked by boldly moulded cornices, enriched with conventional foliage. The shop facade is in two bays of twenty feet each, divided by a vestibule of nine feet wide at the entrance, by a depth of twelve feet. The enclosed window space is of a similar depth, thus affording a show space on either side of twenty feet by twelve feet. The front is flanked by bold pilasters, and an effective central feature is produced by similar projections. All these rest on massive and handsome shafts of polished Aberdeen granite, with richly carved capitals, above which are introduced, in flat stone consoles, four medallion inlays of green Connemara marble. The extensive plate glass windows are divided and enriched on each side by highly ornamental cast-iron shop arcades, divided each into three bays by arches springing from delicate and handsomely designed shafts. A similar arcading, in two bays, returns within the vestibule, which is laid with a rich pattern of Minton's encaustic tiles, and enclosed along the sides, to a height of two feet, with cast-metal panels of diaper pattern inserted between the shafts. The whole of the shop front is protected by Salmon, Barnes, & Co.'s patent revolving shutters, which, being made of wood instead of iron, and, therefore, not liable to rust, give perfect satisfaction. Mr. A. A. Watt, Belfast, is agent for the North for Messrs. Salmon, Barnes, & Co., Ulverston, Lancashire, patentees of these shutters. On the second storey the windows, filled with plate glass and divided by bead rolls and transoms, are circular headed, with moulded impost, shafted piers, and bold archivolts, and key-stones. The third storey windows are segment-headed or upper ties of the roof, from which spring on pendentives four handsome domes, each measuring sixteen feet in diameter at its base. These, which are panelled, have consoled arcustraves at their springing lines, beneath which the oblong spaces and spandrels, which conceal the trussing, are filled in with rich scroll ornamentation in stucco. At their apex they are covered with concave dome lights, each of which measures 102 inches in diameter, by means of which a satisfactory and pleasing light is afforded to the whole of the shop-area, while the damp and wet

From its construction, and the introduction of the dome lights, the roof is necessarily truncated, and has the flats covered with lead. Every possible provision has been made for ventilation, especially at the base of the domes, and by ventilators placed over the gaslights, which communicate, by means of ceiling-flues, with air shafts in the walls, and Howarth's revolving ventilators on the roof. The establishment is heated by Messrs. Musgrave & Co.'s (of Belfast) patent "warmed fresh air" system, which

(continued)

(of Belfast) patent) warmed from air system, which has been very generally introduced into large buildings of late, and is highly approved of. All the plumbing, lighting, and gasfitting arrangements have been carried out by Messrs. McLaughlin & McCullough, of London-street, Derry, in a satisfactory manner. The show space in the windows is lighted with sun-burners, supplied by the firm of Defries & Sons, of London, which have thirty-five lights each, with crystal decorations. There is also a handsome vestibule lamp. The show-room is lighted by a rich five-light chandelier and wall brackets, all in gold, and the shop by means of two-light pendants, in Florentine bronze, suspended from the soffits of the gallery and roof beams in the centre of each bay. There are also pillar lights to the centre counter. The whole of the gas fixtures are fitted with white opal shades and patent regulator burners. It should be mentioned that the cast metal work, of superior design and finish, was supplied to the contractor by Messrs. George Smith & Co., of the Sun Foundry, Glasgow, for whom also the ornamental plasterer's work was executed by Mr. Creery, of London-street, in an excellent manner. The contractors (& the painter's work in Bishop-street were the Messrs. Shannon, of Bishop-street, who have executed it, as far as it has gone, with their usual taste and promptitude. Mr. John Durbin had the contract for painting the Pump-street portion, which he did satisfactorily. The premises, as they now stand, are an ornament to the city, and creditable to the drapery trade in Ulster. The entire works were carried out, under the immediate superintendence and from the drawings and details of the architect, Mr. John Guy Ferguson, C.E., on whom the designs reflect the highest credit, by Mr. Ballintine, whose execution of this important contract, within a period of twelve months (the Pump-street premises having been commenced in February last, and those in Bishop-street in April), has given the most perfect satisfaction. Mr. William McCormick, it should be stated, was the contractor's foreman.

The Londonderry Sentinel, 25 January 1879

NEW BUSINESS PREMISES, LONDONDERRY.

THE old-established firm of Messrs. Mulholland and Co., Londonderry, have just had erected for them in Bishop-street and Pump-street extensive premises for their business as general drapers. The local *Sentinel* is of opinion that "this establishment, for extent, completeness, and general appearance, is unrivalled in the North of Ireland, and is only equalled by some of the more extensive metropolitan houses in the same line." The premises extend from Bishop-street to Pump-street a depth of 260 ft., having frontages to both streets of 60 ft. and 86 ft. respectively. The elevation to Bishop-street is 50 ft. in height, in three storeys, marked by boldly-moulded cornices with conventional foliage. The shop façade is of two bays 20 ft. each, separated by a vestibule 12 ft. x 9 ft. The front is flanked by bold pilasters, and an effective central feature is produced by similar projections. All these rest on massive shafts of Aberdeen polished granite, with richly-carved capitals, above which are introduced, in flat stone consoles, four medallion inlays of Connemara marble. The plate glass windows are divided by highly-ornamental cast-iron arcades, divided each into three bays by arches springing from delicate shafts. A similar arcading, in two bays, returns within the vestibule, which is laid with Mintons' encaustic tiles, and enclosed along the sides, to a height of 2 ft. with cast-metal panels of diaper pattern inserted between the shafts. The whole of the shop front is protected by Salmon, Barnes, and Co.'s patent revolving shutters. On the second storey the windows, filled with plate-glass and divided by bead rolls and transoms, are circular-headed, with moulded imposts, bold archivolt, and key-stones. The third storey windows are segment-headed on the flanks, and similarly finished, but without archivolt. Centrally there is a circular-headed two-light window, which opens on a cast-metal balcony, projecting 3 ft. 6 in. beyond the line of front; it is supported on two ornamental iron trusses, resting on the capitals of two pilasters of Aberdeen polished granite, which sit above the shafts already described. The main cornice is boldly moulded, and projects on leaf-encrusted consoles closely spaced. All the cornices break over the pilasters, thus forming effective capitals. The main cornice is finished with a blocking and balustrading of cast metal. The whole of the front is executed in Portland cement. As to the internal arrangements of the building it will suffice to state that they are admirably planned with a view to the demands of a large trade, necessitating various departments. Every possible provision has been made for ventilation, especially at the base of the domes, and by ventilators placed over the gaslights, which communicate, by means of ceiling-flues, with air-shafts in the walls, and revolving ventilators on roof. The works were carried

The Londonderry Sentinel, 1879

M. MULHOLLAND & CO.,
Merchant Tailors,
Wholesale & Retail Drapers,
1, *Diamond*,
And 2, 4, 6, & 8, BISHOP STREET,
LONDONDERRY.

Derry Almanac, 1889

M. MULHOLLAND & CO., LTD.,



Wholesale and Retail General Drapers,
BISHOP STREET, LONDONDERRY.

THE HIGHEST CLASS **MERCHANT TAILORING** ON THE PREMISES.

☛ Only the Finest, Best, and Most Fashionable Goods KEPT IN STOCK.

Men's, Youths', & Boys' READY-MADE CLOTHING, HATS, CAPS,
An Immense Variety.
Always in Stock, and Sold at the Smallest Minimum of Profit.

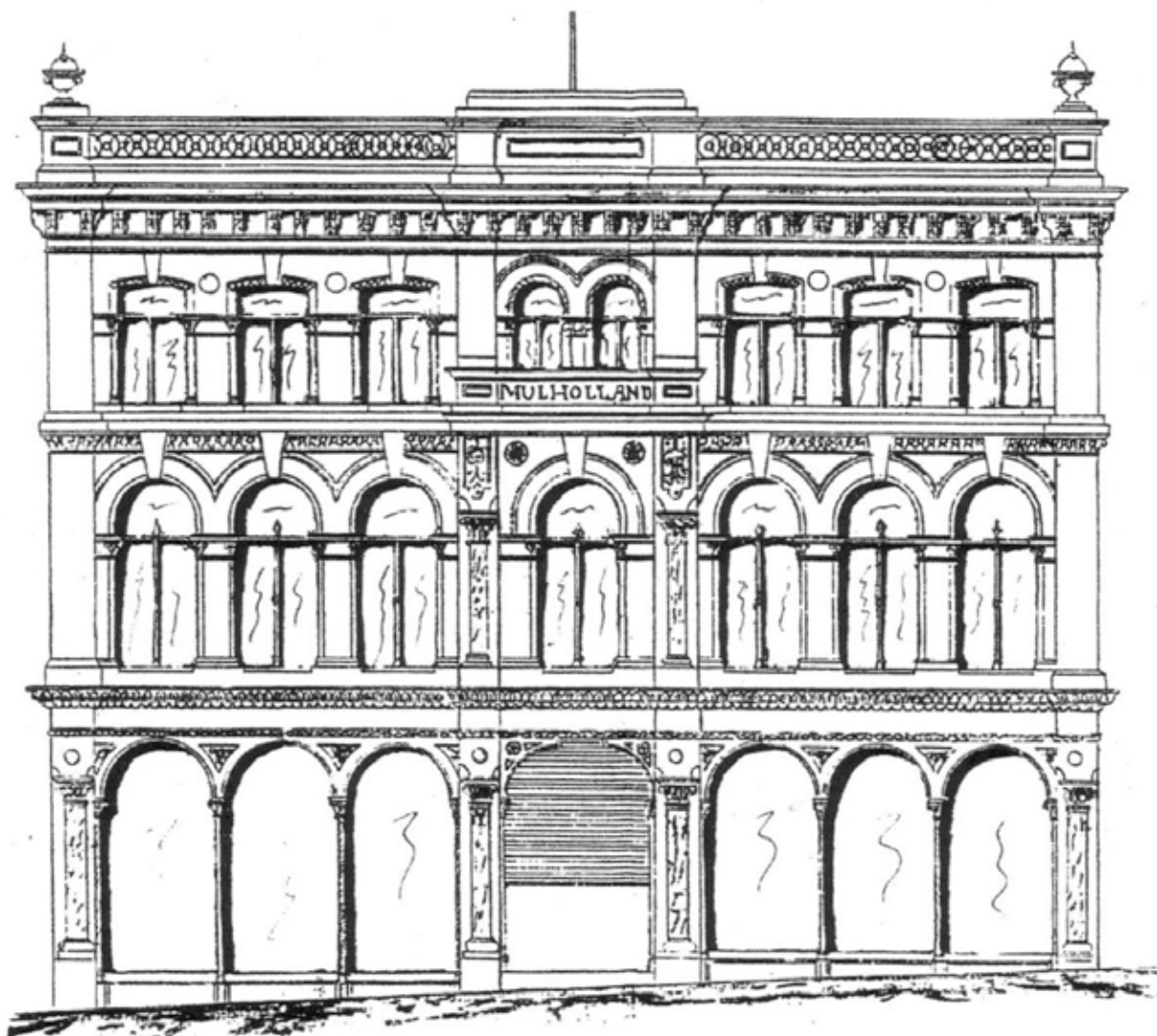
LADIES' & GENTLEMEN'S OUTFITTING a Speciality.
A Charming Assortment of DRESS GOODS, SILKS, MANTLES,
COSTUMES, JACKETS, WATERPROOFS.
The **Latest Novelties** always to Select from at Popular Prices.

Handsome and Elegant MILLINERY, BONNETS and HATS. Children's and
Ladies' UNDERCLOTHING, and BABY LINEN in endless variety.
HOSIERY, GLOVES, UMBRELLAS, FLOWERS, FEATHERS, LACES,
RIBBONS, BLOUSES, BOAS, FRONTS, &c.

STYLISH GOODS only kept in Stock.
HOUSEHOLD LINENS, BLANKETS, QUILTS, FLANNELS, CARPETS,
OILCLOTHS, RUGS, &c., now selling at Wholesale Prices.

M. MULHOLLAND & CO., Ltd.,
Bishop Street, Londonderry.

Derry Almanac, 1903



Mulholland's, 6-8 Bishop Street

Archive Images



Mulholland's, from the Diamond, circa 1930



Address	10 Bishop Street
Name	None
Map Reference	02
Plot Number	52
Listed Building Reference Grade	No N/A N/A
Conservation Area Reference	Yes Historic City
Building at Risk Reference	No N/A
Date of Construction	
Original Use	Retail/Office
Present Use	Retail/Office

Description

Three-storey, four bay, smooth rendered façade, natural slate roof. Vertical sliding sash, painted timber windows, one-over-one. Plain rendered surround with key 'stone' to window openings. Traditional style shopfront with 3No. semi-circular headed windows, pilasters and decorative scroll brackets below fascia. Double, four panel entrance doors with small paned glazed light over.

Owners/Tenants

1832	Ashton & Co.
1858	Patrick Kelly
1871	William Beatty
1884-1893	Mary A Roddy (Roddy Hotel)
1903-1909	William Roddy (Roddy Hotel)
1918	Vacant
2006	The Junction

Derry Almanac

Archive Articles



Derry Almanac, 1876



Derry Almanac, 1905



Address	12-14 Bishop Street
Name	None
Map Reference	03
Plot Number	51
Listed Building Grade Reference	No N/A N/A
Conservation Area Reference	Yes Historic City
Building at Risk Reference	No N/A
Date of Construction	
Original Use	Retail
Present Use	Offices

Description

Three-storey, four-bay, brick façade to upper floors with rendered quoins and piers at ground floor. Vertical sliding sash, painted timber windows with segmental heads. Two-over-two at first floor, two-over-one at second floor. Replacement traditional style double fronted shopfront with central recessed solid panel double entrance doors. Small pane display windows with diamond detail in top lights. Recessed solid panel double ancillary doors to left hand side.

Owners/Tenants

12 Bishop Street

1832-1858	Samuel Dysart
1871-1884	Andrew Henry
1893	Coyle & Co.
1903	John Burns & Co.
1909	Vacant
1918	D J Sheil
2006	Inner City Trust

14 Bishop Street

1832	David Baird
1871	Alexander Dysart
1884	Hugh Nevin
1893	Coyle & Co.
1903	John Burns & Co.
1909	Vacant
1918	D J Sheil
2006	Inner City Trust

Derry Almanac

Archive Articles

Do not Buy your Watches or Jewellery at a Retail Shop.
Send direct to the Wholesale Agent or Manufacturer.
BIRMINGHAM Supplies the World with JEWELLERY.

COYLE & CO.
Are the ONLY Wholesale Agents in Derry
For the largest Manufacturing Jewellers in Birmingham.

Genl.'s Gold Levers, Hall-marked Cases, from 50s to £20.
Ladies' High-class Gold Watches, Hall-marked, from 45s to £5.
The Excelsior Silver Watch, 15s Post Free. Wonderful Timekeeper, genuine Silver Cases, Crystal Glass, full Jewelled, and Enamelled Dial.
Ladies' Size, Engraved Cases, same Price. 15s.
— Written Warranty to Repairs—Free.

Three-quarter Plate Silver Levers, Compensation Balance, Jewelled in Six Holes, 31s.
English Silver Levers, Capped and Jewelled, 45s and 50s.
Highest Class Silver English Levers made, Jewelled, and Warranted Seven Years, 60s, 65s, 70s.
Genl.'s Solid Silver-Cased Watches, Jewelled, Gold Balances, 15s. to 25s.

GOLD & SILVER JEWELLERY.
No old-fashioned Extravagant Prices.
Genl.'s Hall-marked Silver Alberts, from 6s 6d up.
Ladies' Silver Alberts, from 4s 6d up.
Silver Horse-Shoe Scarf Pins, from 6d up.
Silver Brooches, from 10d up.
Imitation Diamond Ear-rings, from 10d up.
Silver Rings, from 1s up.
Gold Keepers, from 6s up.
Gold Scarf Pins, from 3s 6d up.
Gold Brooches, from 6s up.
Gold Engagement Rings, from 1s 6d up.
1,000 New Patterns in Stock.



Electro-Plate, Cutlery, Telescopes, Opera Glasses,
VIOLINS, ACCORDIANS, FOOTBALLS, BOXING GLOVES, &c.

COYLE & CO.,
Wholesale Watchmakers and Jewellers,
12, 14, and 16, BISHOP STREET, DERRY.

Derry Almanac, 1893

Furnishing Department.

450 French and Parisian Iron Beds, Black and Gold, High-class finish, 11s 6d, 12s 6d, 13s 6d, 14s 6d, and 15s 6d.
Solid Brass Mounted, 15s to 30s. These Prices cannot be competed with.
Every Description of Palliasses, quality guaranteed, 3s 6d, 4s, 4s 6d, and 5s.
Hair, Wool, Fibre, Stuffed, and Spring Mattresses, 7s 6d, 8s 6d, 9s 6d, 10s 6d, 11s 6d, 12s 6d, 13s 6d, 15s, to 40s. Quality guaranteed.
Mahogany Chairs, in Real Hair Cloth, 6s, 7s, 8s, 9s, and 10s.
Mahogany Easy Chairs, in real Hair Cloth, 27s 6d.
Couches, in real Hair Cloth, 42s 6d.
Easy Chairs, in American Leather, 12s 6d up.
Parlour Chairs, in American Leather, 5s 6d.
Parlour Couches, in American Leather, 15s up.
Mahogany Cabinets, from 35s.
Very Handsome Cabinet, 25s 6d.
Mahogany Cornice Poles, Ends and Rings complete, from 2s 6d.
Mahogany Toilet Mirrors, from 2s to 20s.
Fenton's, Rodger's, and Elliott's Table Cutlery.
A1 Electro-Plate Goods—Cruets, Tea Sets, Biscuit Boxes, Cases of Carvers, Dish Covers, &c.

French and German Accordians, Steel and Silver Reeds, 4s, 4s 6d, 5s 6d, 7s 6d, to 25s.
Field Glasses, Opera Glasses, Telescopes, &c., best Paris makes.
Trunks, Bonnet Boxes, from 1s to 20s.
Portmanteaus, Gladstone Bags and Ladies' Hand Bags, 1s to 30s.
FOOTBALLS, all Sizes, in solid Leather Cases, 1s, 1s 6d, 2s, 2s 6d, 3s, 3s 6d, 4s, 5s, 6s, 7s up.
Rodger's & Avery's Scales and Weighing Machines.

COYLE & CO.,
House-Furnishing Warehousemen,
12, 14, & 16, BISHOP STREET, LONDONDERRY.

Derry Almanac, 1893

COYLE, KATHLEEN 1883–1952

Kathleen Coyle was born in Derry. She suffered an accident at the age of three, when her foot caught in the spokes of a pram. A delay in treatment resulted in her having to wear a built-up shoe. She had a tutor and did not attend school. She wrote her first short story when she was nine, and when it was lost swore she would never write again. In her youth the family house burnt down. She and her mother and a brother went to live in Liverpool, where she worked in a library. She later worked in an editor's office in London and then moved to Dublin, where she became involved in both the Labour movement and the Suffragettes. She began to write as a means of supporting her two small children. Her first book was published when she was living in London before she travelled abroad to Belgium and Paris, where she knew Nora and James Joyce. She wrote nineteen books, thirteen of which are novels; one, *The French Husband*, was written under economic pressure in eleven days. She published two autobiographies, *A Flock of Birds* and *The Magical Realm*, which deals with her childhood in Derry: 'It is absurd to think that life begins for us at birth. The pattern is set far back, we merely step into the process.'



Article

Kathleen Coyle, circa 1935



Address	16 Bishop Street
Name	None
Map Reference	04
Plot Number	50
Listed Building Reference Grade	No N/A N/A
Conservation Area Reference	Yes Historic City
Building at Risk Reference	No N/A
Date of Construction	
Original Use	Retail
Present Use	Retail

Description

Three-storey, four bay, brick façade, natural slate roof with bracketed eaves detail. Diamond faced quoins. Semi-circular fanlight to entrance door with boldly moulded door surround incorporating cornice and fascia supported by diamond faced console brackets. Vertical sliding sash painted timber windows, one-over-one at first floor, six-over-one at second floor. Pedimented window surrounds at first floor, stepped keystone heads at second floor. Contemporary shopfront fascia signage. ,

Owners/Tenants

16 Bishop Street

1832	Thomas Mulholland
1858	William Sawers
1871	Whyte & Co.
1884	Nicholas Brownlow & Co.
1893	Coyle & Co.
1903	Rudge Whitworth Cycle Depot
1909	Babington & Ross (S C Ross)
1918	Stuart C Ross, T A MacNeary & Co., Mrs Graham, J McColgan
2006	Sensory Support Service

Derry Almanac

Archive Articles

Do not Buy your Watches or Jewellery at a Retail Shop.
Send direct to the Wholesale Agent or Manufacturer.
BIRMINGHAM Supplies the World with JEWELLERY.

COYLE & CO.
Are the **ONLY Wholesale Agents in Derry**
For the largest Manufacturing Jewellers in Birmingham.

Gent.'s Gold Levers, Hall-marked Cases, from 50s to £20.
Ladies' High-class Gold Watches, Hall-marked, from 45s to £5.
The Excelsior Silver Watch, 15s Post Free. Wonderful Timekeeper, genuine Silver Cases, Crystal Glass, full Jewelled, and Enamelled Dial.
Ladies' Size, Engraved Cases, same Price. 15s.
— Written Warranty to Repairs—Free.

Three-quarter Plate Silver Levers, Compensation Balance, Jewelled in Six Holes, 31s.
English Silver Levers, Capped and Jewelled, 45s and 50s.
Highest Class Silver English Levers made, Jewelled, and Warranted Seven Years, 60s, 65s, 70s.
Gent.'s Solid Silver-Cased Watches, Jewelled, Gold Balances, 15s. to 25s.

GOLD & SILVER JEWELLERY.
No old-fashioned Extravagant Prices.
Gent.'s Hall-marked Silver Alberts, from 6s 6d up.
Ladies' Silver Alberts, from 4s 6d up.
Silver Horse-Shoe Scarf Pins, from 6d up.
Silver Brooches, from 10d up.
Imitation Diamond Ear-rings, from 10d up.
Silver Rings, from 1s up.
Gold Keepers, from 6s up.
Gold Scarf Pins, from 3s 6d up.
Gold Brooches, from 6s up.
Gold Engagement Rings, from 1s 6d up.
1,000 New Patterns in Stock.

Electro-Plate, Cutlery, Telescopes, Opera Glasses,
VIOLINS, ACCORDIANS, FOOTBALLS, BOXING GLOVES, &c.

COYLE & CO.,
Wholesale Watchmakers and Jewellers,
12, 14, and 16, BISHOP STREET, DERRY.



Derry Almanac, 1893

Furnishing Department.

450 French and Parisian Iron Beds, Black and Gold, High-class finish, 11s 6d, 12s 6d, 13s 6d, 14s 6d, and 15s 6d.
Solid Brass Mounted, 15s to 30s. These Prices cannot be competed with.
Every Description of Palliasses, quality guaranteed, 3s 6d, 4s, 4s 6d, and 5s.
Hair, Wool, Fibre, Stuffed, and Spring Mattresses, 7s 6d, 8s 6d, 9s 6d, 10s 6d, 11s 6d, 12s 6d, 13s 6d, 15s, to 40s. Quality guaranteed.
Mahogany Chairs, in Real Hair Cloth, 6s, 7s, 8s, 9s, and 10s.
Mahogany Easy Chairs, in real Hair Cloth, 27s 6d.
Couches, in real Hair Cloth, 42s 6d.
Easy Chairs, in American Leather, 12s 6d up.
Parlour Chairs, in American Leather, 5s 6d.
Parlour Couches, in American Leather, 15s up.
Mahogany Cabinets, from 35s.
Very Handsome Cabinet, 25s 6d.
Mahogany Cornice Poles, Ends and Rings complete, from 2s 6d.
Mahogany Toilet Mirrors, from 2s to 20s.
Fenton's, Rodger's, and Elliott's Table Cutlery.
A1 Electro-Plate Goods—Cruets, Tea Sets, Biscuit Boxes, Cases of Carvers, Dish Covers, &c.
French and German Accordians, Steel and Silver Reeds, 4s, 4s 6d, 5s 6d, 7s 6d, to 25s.
Field Glasses, Opera Glasses, Telescopes, &c., best Paris makes.
Trunks, Bonnet Boxes, from 1s to 20s.
Portmanteaus, Gladstone Bags and Ladies' Hand Bags, 1s to 30s.
FOOTBALLS, all Sizes, in solid Leather Cases, 1s, 1s 6d, 2s, 2s 6d, 3s, 3s 6d, 4s, 5s, 6s, 7s up.
Rodger's & Avery's Scales and Weighing Machines.

COYLE & CO.,
House-Furnishing Warehousemen,
12, 14, & 16, BISHOP STREET, LONDONDERRY.

Derry Almanac, 1893



Proposed Bishop Street Elevation, circa 1893

COYLE, KATHLEEN 1883–1952

Kathleen Coyle was born in Derry. She suffered an accident at the age of three, when her foot caught in the spokes of a pram. A delay in treatment resulted in her having to wear a built-up shoe. She had a tutor and did not attend school. She wrote her first short story when she was nine, and when it was lost swore she would never write again. In her youth the family house burnt down. She and her mother and a brother went to live in Liverpool, where she worked in a library. She later worked in an editor's office in London and then moved to Dublin, where she became involved in both the Labour movement and the Suffragettes. She began to write as a means of supporting her two small children. Her first book was published when she was living in London before she travelled abroad to Belgium and Paris, where she knew Nora and James Joyce. She wrote nineteen books, thirteen of which are novels; one, *The French Husband*, was written under economic pressure in eleven days. She published two autobiographies, *A Flock of Birds* and *The Magical Realm*, which deals with her childhood in Derry: 'It is absurd to think that life begins for us at birth. The pattern is set far back, we merely step into the process.'



Article

Kathleen Coyle, circa 1935

BEFORE BUYING ANYTHING CONSULT

JOHN McCOLGAN, LTD.

Best Selection in town of China, Glass,
Earthenware. Agents for Doulton figures
and Table ware. Waterford Glass, Belleek
China, also Furniture and General Hardware.
Our many Agencies include the Best Knitting
Machine "The Knitmaster."

also Hoover and Electrolux Washing Machines and Cleaners.

Open Saturday 6 p.m.

Phone: 3085.

16-20 BISHOP STREET

::

DERRY

Sea Eagle Grand Fair 1963



Address	18-20 Bishop Street
Name	None
Map Reference	05
Plot Number	48,49
Listed Building Reference Grade	No N/A N/A
Conservation Area Reference	Yes Historic City
Building at Risk Reference	No N/A
Date of Construction	
Original Use	Retail/Dwelling
Present Use	Retail

Description

Three-storey, eight-bay, smooth rendered facade, originally subdivided into two properties. Two-over-two vertical sliding sash painted timber windows, with moulded surrounds. Natural slate roof with end gable chimney. Traditional style shopfronts.

Owners/Tenants

18-20 Bishop Street

1832	Andrew Moore
1858-1871	Samuel Gilliland
1884	Henry McDonnell & Son
1893	Henry McDonnell & Son, Thomas A Gilchrist & Co., Teresa Gallagher
1903	Henry McDonnell & Son, Teresa Gallagher
1909	Vacant
1918	E Marks & Co. Ltd, W G O'Doherty
2006	Bookworm

Derry Almanac

Archive Articles

☞ The HAT, for Comfort and effect, being the MOST IMPORTANT portion of a Gentleman's Dress, hence the advantage of Purchasing from a PRACTICAL HATTER.—*Book of Fashion.*

THAT WELL-KNOWN HOUSE FOR



J. THOMPSON,
London Hat & Cap Emporium,
18, BISHOP STREET, LONDONDERRY,

Has always on hand one of the LARGEST and BEST SELECTED STOCKS IN ULSTER. STYLE and VALUE unequalled by any House in the Trade. Hundreds of the **Newest Shapes** to select from.


CLERICAL HATS of the most approved Styles.

Latest Novelties in

LADIES' FELT HATS, HUNTING HATS, LIVERY HATS,
GOLD and SILVER BANDS, COCKADES, &c., &c.

† **REAL IRISH BLACKTHORN,** †

WELL SEASONED AND DRESSED.

 **HATS MADE TO ORDER** { **ON THE SHORTEST NOTICE.**

GENTLEMEN'S SILK HATS Dressed and Altered to the Present Fashions. GENTLEMEN'S OLD FELT and SILK HATS made into the Leading Styles for Ladies and Children.

J. THOMPSON,
GENTLEMEN'S First-Class HAT MANUFACTURER,
London Hat and Cap Emporium,
18, BISHOP STREET, LONDONDERRY.

Derry Almanac, 1889

BEFORE BUYING ANYTHING CONSULT

JOHN McCOLGAN, LTD.

Best Selection in town of China, Glass,
Earthenware. Agents for Doulton figures
and Table ware. Waterford Glass, Belleek
China, also Furniture and General Hardware.

Our many Agencies include the Best Knitting
Machine "The Knitmaster."

also Hoover and Electrolux Washing Machines and Cleaners.

Open Saturday 6 p.m.

Phone: 3085.

16-20 BISHOP STREET :: DERRY

Sea Eagle Grand Fair 1963



Address	22 Bishop Street
Name	None
Map Reference	06
Plot Number	4
Listed Building Reference Grade	No N/A N/A
Conservation Area Reference	Yes Historic City
Building at Risk Reference	No N/A
Date of Construction	
Original Use	Retail/Office
Present Use	Retail/Office

Description

Three-storey corner building with brick façade, rendered below shopfront fascia. Two-bay frontage to Bishop's street, six-bay frontage to London Street and single-bay splayed corner. Two-over-two vertical sliding sash painted timber windows, with moulded surrounds. Natural slate, hipped roof.

Owners/Tenants

22 Bishop Street

1832	John Little & Co.
1858	Alexander Lindsey
1871	Samuel Bell (shop)
1884	Samuel Bell TC
1893	Samuel Bell (Alderman)
1903	Samuel Bell
1909	Samuel Bell & Co. (T Knox
1918	Herbert Cattley
2006	The Whatnot

Derry Almanac

Archive Articles

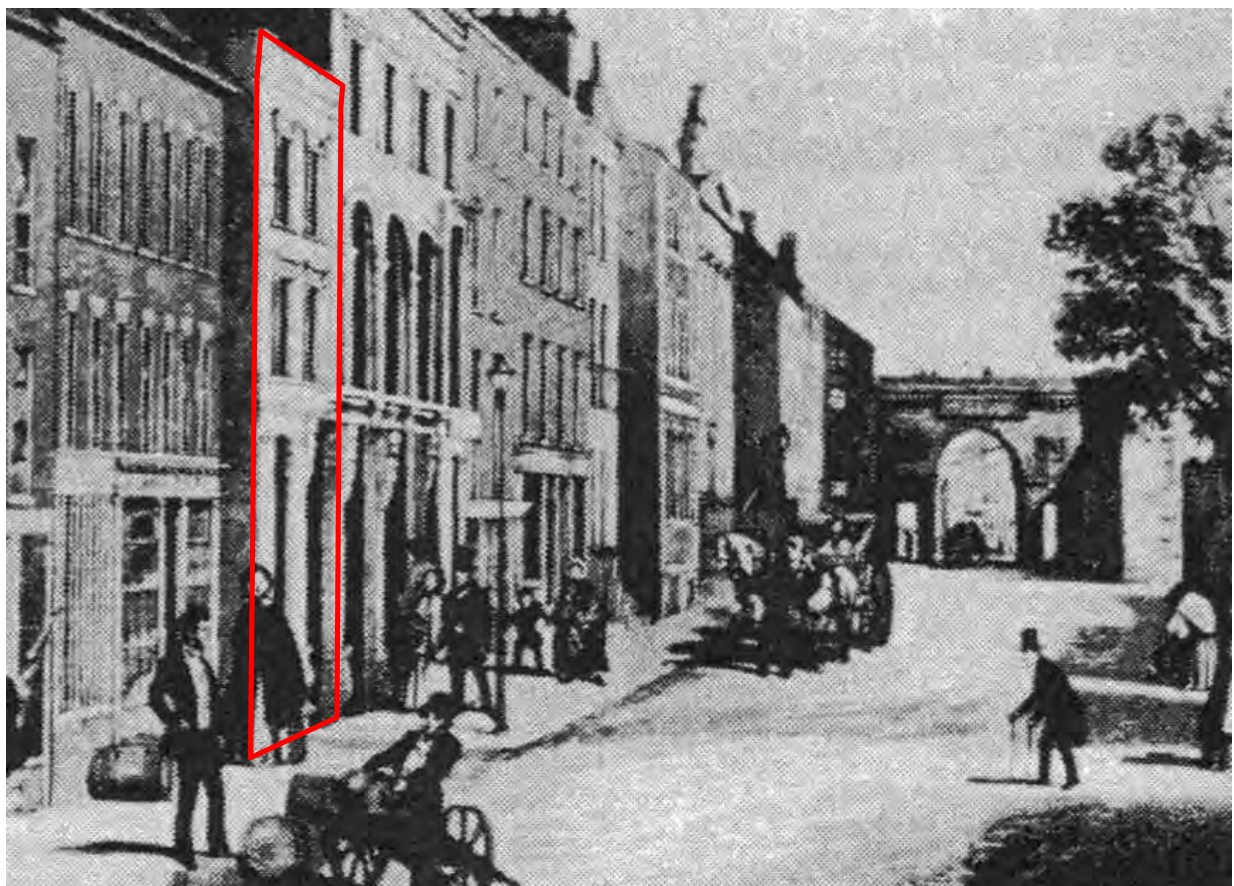
CITY CUTLERY ESTABLISHMENT,
BISHOP STREET,
(Corner of London Street, Londonderry.)
—:—:—
SAMUEL BELL,
CUTLER, &c.
RAZORS and STROPS; PEN, POCKET, and SPORTSMEN'S KNIVES.
TABLE and DESSERT KNIVES; SCISSORS, &c.
All Sorts of TRUSSES and UMBILICAL BANDAGES for CHILDREN.
SURGICAL INSTRUMENTS, and all kinds of CUTLERY Made and
Repaired in the best manner.
TRUSSES and BANDAGES supplied to Public Institutions at
REDUCED PRICES.

Derry Almanac, 1876

Umbrella Manufactory,
BISHOP STREET, DERRY.
SAMUEL BELL, Proprietor.
—:—:—
UMBRELLAS MADE, COVERED, AND REPAIRED
In the BEST MANNER, and on the SHORTEST
POSSIBLE NOTICE.
Always on hand a
Large Stock of **Silk & Alpaca Umbrellas.**
ALSO A WELL SELECTED STOCK OF
WALKING STICKS, CANES, &c., &c.

Derry Almanac, 1889

Archive Images



22 Bishop Street, circa 1850



Address	24 Bishop Street
Name	Northern Counties Club
Map Reference	07
Plot Number	4,5
Listed Building Reference Grade	Yes HB01/19/008 B1
Conservation Area Reference	Yes Historic City
Building at Risk Reference	No N/A
Date of Construction	1902
Original Use	Private Members Club
Present Use	Vacant

Description

1902: Architect: Alfred A Foreman

The Northern Counties Club was remodelled in 1902. This is a three-storey building with dormers. The ground floor openings are deeply recessed and rusticated in rendering, with frieze and cornice over and with scrolled pediments over the end openings. The first and second floors are divided into five bays, with rounded and flat pilasters with pedestals and Corinthian capitals. The pilasters are fluted to second floor level. The first floor windows are shallow bays and the end bays are carried through the second floor. The second floor is finished with deep entablature and dentilled cornice. The end bays at roof level are finished with steep sloping slated pyramids, somewhat similar to features used by Foreman on other buildings. The dormer windows are finished with rather course pediments.

Historic Buildings in and near the City of Derry, Ulster Architectural Heritage Society, 1970

The Northern Counties Club, lavishly remodelled by Alfred Foreman in 1902 and now a five-bay, three-storey block with a giant order of composite pilasters across the upper floors of the entire front, expanding to half columns on the end bays and supporting conical slate roofs.

The Buildings of Ireland, North West Ulster, Alistair Rowan, 1979

Owners/Tenants

24 Bishop Street

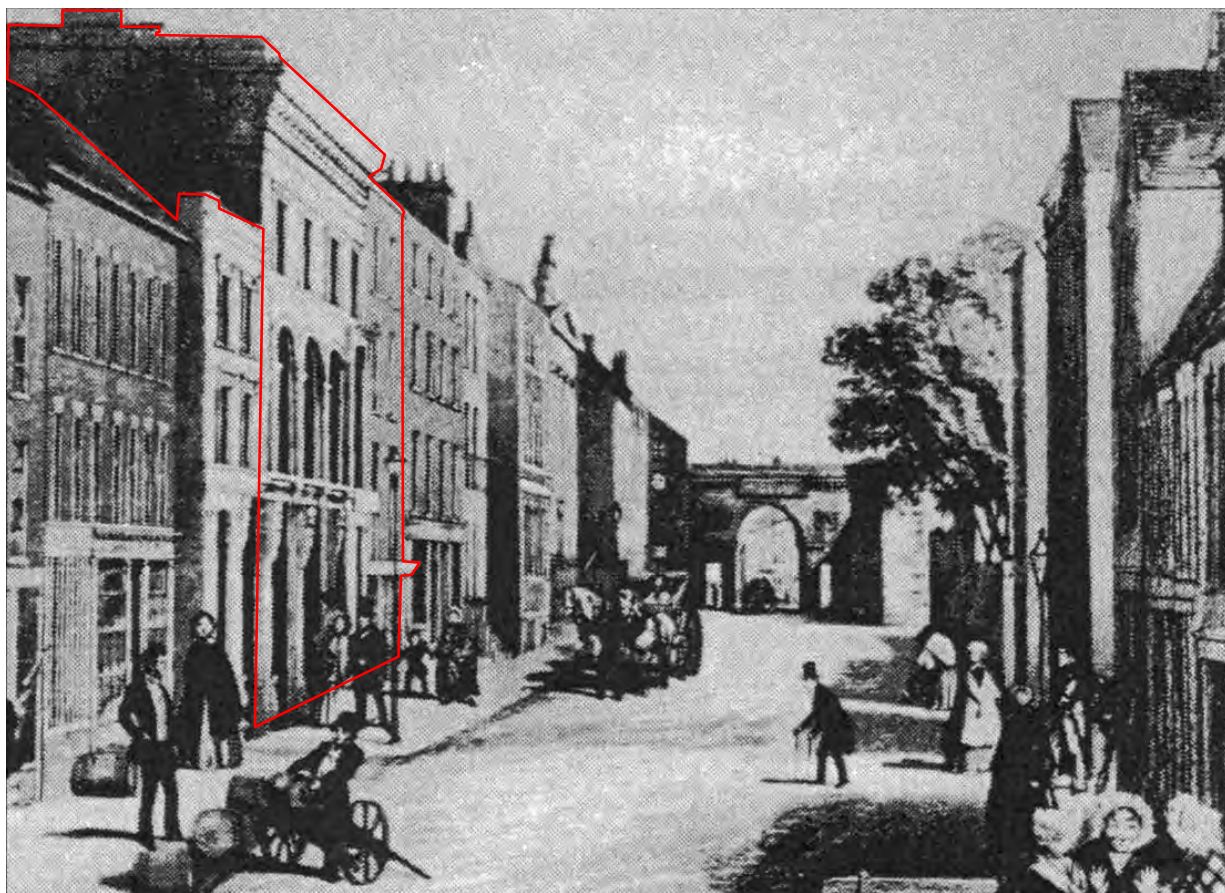
1832	John Rankin
1858	John McCauley
1871	John C McBeth
1884	William Shannon
1893-1918	Northern Counties Club
2005	Northern Counties Club
2006	Vacant

24A Bishop Street

1832	Samuel Mitchell
1858	John Macauley
1871	George Smart
1884	Archibald Bell & Son
1893	John Bell
1903	Archibald Bell
	Demolished

Derry Almanac

Archive Images



Northern Counties Club, Bishop Street, prior to remodelling, circa 1850



Northern Counties Club, Bishop Street, prior to remodelling, circa 1890



Address	26-28 Bishop Street
Name	None
Map Reference	08
Plot Number	6
Listed Building Reference Grade	No N/A N/A
Conservation Area Reference	Yes Historic City
Building at Risk Reference	No N/A
Date of Construction	
Original Use	House
Present Use	Offices

Description

Four-storey, four-bay, vertical diminishing scale, smooth rendered painted façade, channelled at ground floor, quoins to right hand side only, natural slate roof. Vertical sliding sash painted timber windows, six-over-six at first floor, six-over-three at second floor and three-over-three at third floor all with flat arch heads with projecting rendered keystone. Two-bay shopfront with central entrance to right hand side of ground floor, single bay shopfront window to left hand side with square headed carriage 'arch' between. Decorative, 'art nouveau' gates to carriage 'arch'.

Owners/Tenants

26 Bishop Street

1832	John Campbell
1858-1871	Robert Campbell
1884-1903	Miss Fanny Campbell
1918	E Murphy

28 Bishop Street

1858	Unoccupied
1871	Miss Mary Boggs
1884	Corporation Offices, City Surveyor's Offices, William Laird
1893	Girl's Friendly Lodge, Miss Skipton
1903	Girl's Friendly Lodge, Miss Arnott
1909	Adair & Son
1918	Wm Adair & Son
2006	Smart Move

Derry Almanac

Archive Articles

ADVERTISEMENTS.

DAVIS'S
(From Cadby's Manufactory, London),
Musical Instrument Rooms
AND
GENERAL FANCY GOODS WAREHOUSE,
26, *Bishop Street, Londonderry,*
(OPPOSITE IMPERIAL HOTEL.)

:o:

NEW PIANOS,
With all the Latest Improvement,
FROM 23 GUINEAS.
SECOND-HAND COTTAGE PIANOS,
From £14. **SQUARES, from £2.**
HARMONIUMS & AMERICAN ORGANS
AT LOWEST PRICES.
All Instruments Warranted for Ten Years, and kept in Order for Three Years.

:o:

**A SPLENDID ASSORTMENT OF
FANCY GOODS, TOYS, &c.,**
SUITABLE FOR PRESENTS, &c.
All the LATEST NOVELTIES direct from LONDON and PARIS.
Pianofortes and Harmoniums Tuned and Restored.
BRASS AND DRUM AND FLUTE BANDS SUPPLIED.
Every Article in connection with Music, and all kinds of Fittings, supplied
at the Cheapest Rates.
DAVIS'S ORCHESTRAL OR BRASS BANDS
Can be engaged on the most Moderate Terms, for Balls, Concerts, Weddings,
Dinners, &c.
INSPECTION SOLICITED.

Derry Almanac, 1877

Telephone—Londonderry 2194, or Nurseries, Teic. 2620.
Telegrams—"Adair, Funerals, Londonderry."

WILLIAM ADAIR & SON
FUNERAL DIRECTORS,
28 BISHOP STREET, LONDONDERRY

WEDDING CARS A SPECIALITY.

Personal Supervision. Humber Pullman Fleet

Natural Wreaths and Wedding Bouquets

: : Made in our own Nurseries : :

Battle of Boyne Programme, 1956

Archive Images



26-28 Bishop Street, circa 1850



22-28 Bishop Street, circa 1890



Address	30 Bishop Street
Name	Deanery
Map Reference	09
Plot Number	7
Listed Building Reference Grade	Yes HB01/19/004 A
Conservation Area Reference	Yes Historic City
Building at Risk Reference	No N/A
Date of Construction	1833
Original Use	Deanery
Present Use	Deanery

Description

The deanery is a fine example of a simple Georgian house. Three storeys high, with basement, it is brick-faced, exquisitely executed with sandstone quoins and cornice. The well-designed doorway has a good fanlight and pilasters, and is approached across the basement area from the street. A gateway on the east side gives access to the gardens and stables behind. The interior has a graceful curving staircase leading to the first floor.

Historic Buildings in and near the City of Derry, Ulster Architectural Heritage Society, 1970

History

The Deanery, which was erected in 1833, is a large, unadorned brick building. The expense, which was paid by the present dean, and is to be re-imbursed by his successors, amounted to £3,421. 16s. 8½d. The preceding deanery, which was built by Dr Bolton, was finished on the 28th February 1720.

Ordnance Survey Memoir of Londonderry, Colby, 1837

1833: The Deanery was erected in 1833 at a cost of £3,421. 16s. 8½ d by Thomas Banbury Gough, Dean of Derry, to replace the former deanery built in 1720 and situated in London Street.

Historic Buildings in and near the City of Derry, Ulster Architectural Heritage Society, 1970

Owners/Tenants

30 Bishop Street

1833	Thomas Banbury Gough
1860	Hugh Usher Tighe
1874	Charles Seymour, D.D.
1882	John Gwynn, D.D.
1883	Andrew Ferguson Smyly, M.A.
1897	Thomas Olphert, M.A.
1901	George Galbraith, M.A.
1911	Richard Hayes, B.D.
1921	Richard G.S.King, M.A.
1946	Leslie Robert Lawrenson M.A.
1967	George F.Good, M.A.
1984	David Cecil Orr, M.A.



Address	1 St Columb's Court
Name	Irish Society
Map Reference	10
Plot Number	8
Listed Building Reference Grade	Yes HB01/19/005 B1
Conservation Area Reference	Yes Historic City
Building at Risk Reference	No N/A
Date of Construction	1768
Original Use	
Present Use	Irish Society Offices

Description

The Irish Society's Offices are in a three-storey painted and rendered Georgian building with main fenestration out on to Bishop Street, but entrance, with a good Georgian doorcase, from St Columb's Court. The date is inscribed on a quoinstone on the gable on the St Columb's Court side.

Historic Buildings in and near the City of Derry, Ulster Architectural Heritage Society, 1970

Irish Society House, on the corner, is a plain rectangular Georgian block, three-storey like most of the street, dated 1768 on one of the SW quoins. Five-bay front to Bishop Street with a handsome doorcase at the side. The window glazing bars were replaced about 1820, though one old window with thick bars remains at the back. Solidly mid Georgian inside, with a good staircase, three banisters per tread and Tuscan pilasters. Lugged door-frames with six-panel doors and nice 18th century polychrome marble fireplaces.

The Buildings of Ireland, North West Ulster, Alistair Rowan, 1979

Five-bay, three-storey, smooth rendered façade, originally facing brickwork, with quoins and plinth. Vertical sliding sash painted timber windows, six-over-six at ground and first floor, six-over-three at second floor. Natural slate roof concealed behind plain parapet.

Owners/Tenants

1 St Columb's Court

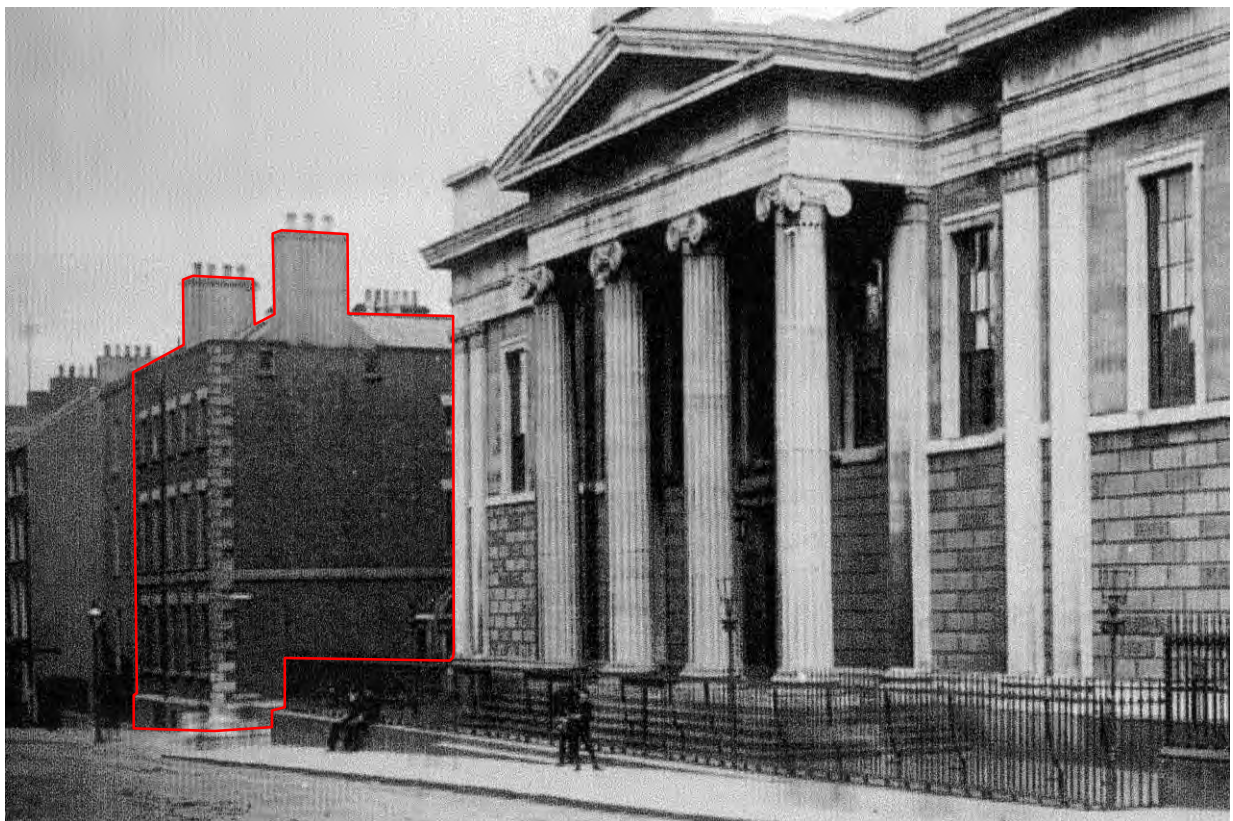
1871	John T Gregg (Office), William Bailie
1884-1893	Irish Society Office
2006	The Honourable the Irish Society

Derry Almanac

Archive Images



1 St Columb's Court, Bishop Street, circa 1890.



1 St Columb's Court, Bishop Street, circa 1890



Address	Courthouse
Name	Courthouse
Map Reference	11
Plot Number	10,11,12,13
Listed Building Reference Grade	Yes B HB01/19/002
Conservation Area Reference	Yes Historic City
Building at Risk Reference	No N/A
Date of Construction	1813-17
Original Use	Law Courts
Present Use	Law Courts

Description

The Court-House possesses much architectural beauty. It exhibits a façade, judiciously broken by a tetrastyle portico of the antique Ionic order, modelled after that of the Temple of Erechtheus, at Athens, and terminating in wings. This edifice measures 126 feet by 66. The tympanum of the pediment is embellished with the royal arms in high relief; and the wings, which are adorned with Doric pilasters, are surmounted by statues of Justice and Peace, executed in Portland Stone by the late Edward Smyth. All the ornamental work is of the same kind of stone, but the principal material is white sandstone, procured chiefly from the neighbourhood of Dungiven. The principal apartments are the crown and record courts, the mayor' public and private offices; the record office; the treasurer's office; those of the clerks of the crown and peace; the judges' room; and the grand jury room.

Ordnance Survey Memoir of Londonderry, Colby, 1837

1813-17 by John Bowden. A scrupulous Greek Revival block with a tetrastyle central portico linked by narrow single bays to slightly projecting ends, also single-bay, flanked by coupled pilasters. The order of the portico is very pure Erechtheum Ionic with almost as pure antae capitals on the pilasters. The building is of two storeys, though on the front only the upper floors are expressed by windows, seven across the whole front. The wall is rusticated below and ashlar above. Generally in Dungiven Sandstone, with the orders, cornices, and string courses in a whiter Portland stone. The Royal coat of arms above the pediment and figures of Peace and Justice, set on a recessed blocking course in the middle of either end bay, are by Edward Smyth of Dublin.

The Buildings of Ireland, North West Ulster, Alistair Rowan, 1979

1817: Architect: John Bowden, Dublin. Builders: Henry, Mullins, and McMahon, Dublin

The courthouse is one of the finest buildings of architectural quality in the city, Greek Revival style, sensitively proportioned, and modelled with a pleasing pedimented portico and the whole excellently sited in the street. Internally the courthouse is disappointing. It possesses a lofty entrance or anteroom, which is dimly lit.

Historic Buildings in and near the City of Derry, Ulster Architectural Heritage Society, 1970

History

On the 21st of April 1812, a Report was presented to the Irish Society on the proposition of Sir George Fitzgerald Hill, Bart., for building a new courthouse at Londonderry, and for obtaining an act of parliament for the purpose, which was favourably received by the Society. The foundation stone was laid on the 18th December 1813, by John Curry, Esq., mayor and of Sir George Fitzgerald Hill; and in 1817 the building was finished. The expenses amounted to £30,479 15s., the purchase of ground and furniture included. The first assizes held in it were those of the summer of 1816. The design was furnished by Mr John Bowden, who died before the work was finished: the remainder was executed by Messrs. Henry, Mullins, and McMahon, pursuant to a commission under 52 George III. c.182. In the mayor's private office are preserved two swords. One of these is inscribed 'Andrea Farara (Ferrara),' having probably been made by that celebrated artisan. This sword was in 1616 presented to the mayor of Derry by the city of London, and is erroneously supposed to have once belonged to Sir Cahir O'Doherty. In addition to the assizes, sessions, and mayor' court, the county meetings and others are held in the Court-House.

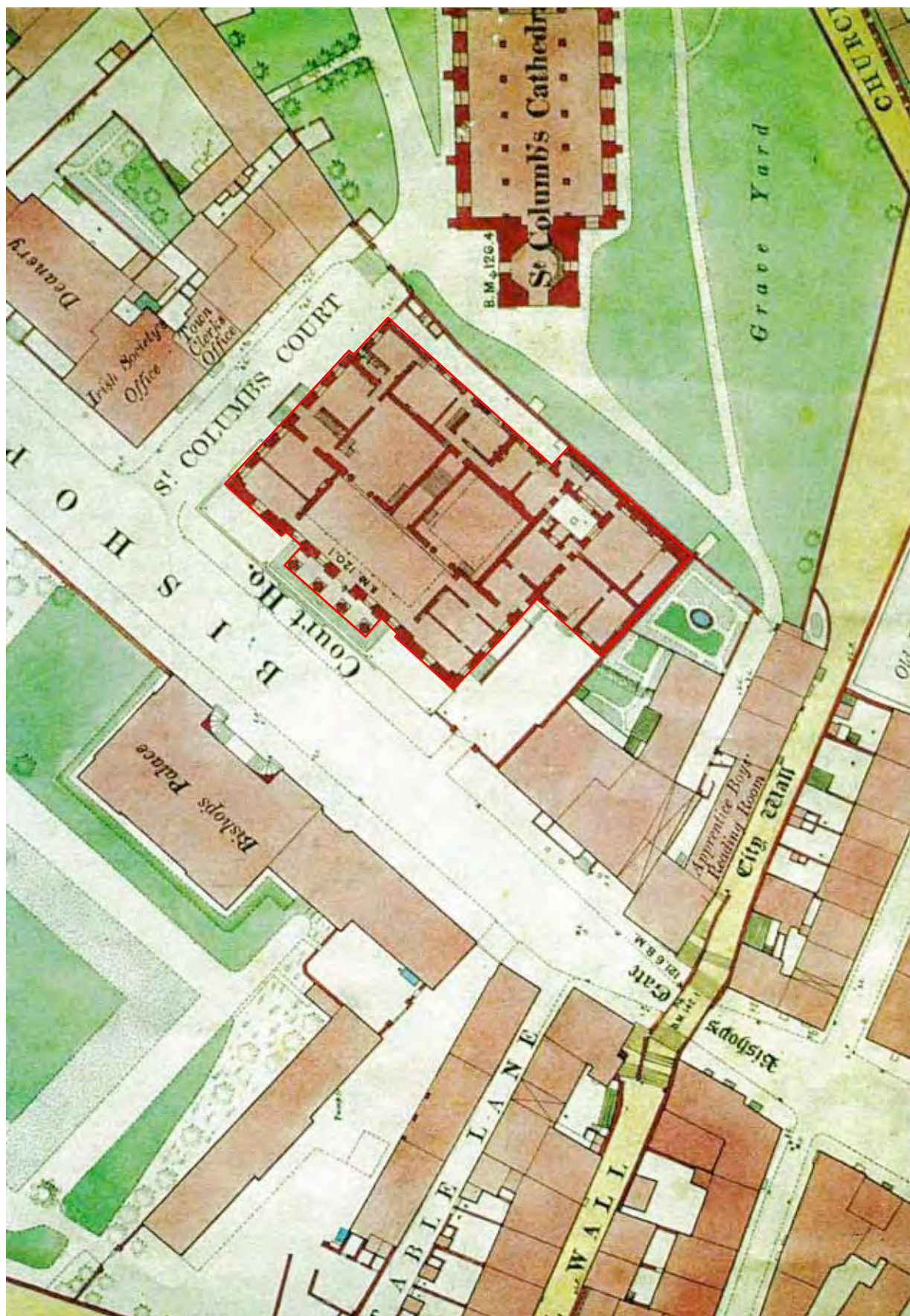
Ordnance Survey Memoir of Londonderry, Colby, 1837

Archive Drawing



Courthouse, Bishop Street, circa 1817 (Derry City Council)

Archive Maps



Ordnance Survey of Ireland, 1873

Archive Images



Courthouse, Bishop Street, circa 1890



Courthouse, Bishop Street, circa 1890



Courthouse and Council Offices, Bishop Street, circa 1950's



Address	Former County Offices
Name	Former County Offices
Map Reference	12
Plot Number	14,15,16,17,18
Listed Building Reference Grade	Yes HB01/19/003 B2
Conservation Area Reference	Yes Historic City
Building at Risk Reference	No N/A
Date of Construction	1899
Original Use	County Offices
Present Use	Law Courts

Description

1890: A simple austere neo-Georgian two-storey building south of the courthouse, carried out in brick and sandstone, which helps to form a small court giving access to the Grand Jury Room in the courthouse. The ground floor is rusticated dressed sandstone, the first floor in red brick with sandstone window dressings and quoins. The frieze, cornice and parapet are in sandstone.

Historic Buildings in and near the City of Derry, Ulster Architectural Heritage Society, 1970

History

3No. three-storey, three-bay properties with brick facades were demolished, after 1893 to enable extension to the Courthouse and provide new County Offices.

Owners/Tenants

Lots 17 & 18

1832	William Elly
1858	Mary Hyslop
1871-1893	Robert Mitchell
Demolished	

Lot 16

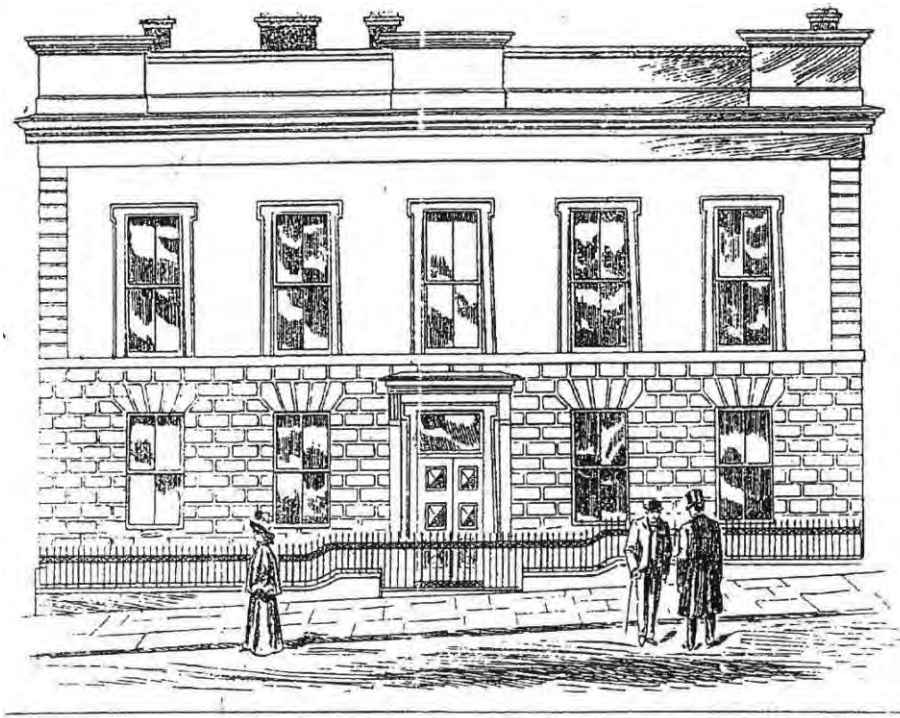
1832	William Shannon
1858	Henry McCay
1871	Henry McCay LLD, John S McCay
1884	Henry McCay LLD, John S McCay (Sheriff)
1893	John S McCay
Demolished	

Lot 15

1832	Joseph Gillespie
1858	The Misses Watson & Wallen
1871	Richard Williamson (Office)
1884	A C Adair (Surveyor), D M Colguhoun (Crown & Peace)
1893	A C Adair, Alfred M Munn (Crown & Peace)
Demolished	
1903-1909	Alfred Moore Munn, Surveyor's Office
2006	Law Courts

Derry Almanac

Archive Articles



THE NEW COUNTY OFFICES. LONDONDERRY.

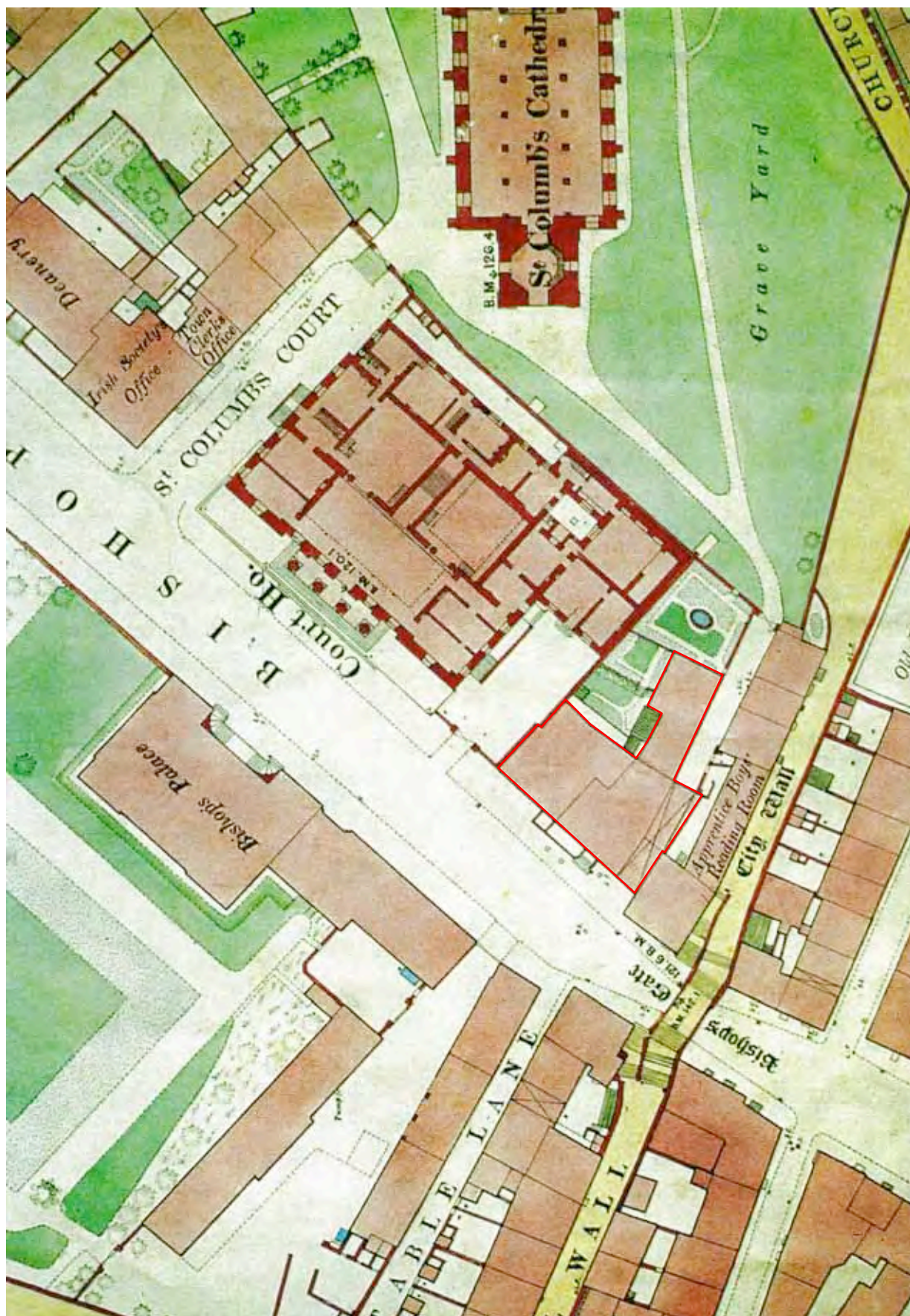
The Londonderry Sentinel, Tuesday Morning, May 30 1899.

THE NEW COUNTY OFFICES, LONDONDERRY.

After years of patient waiting, and much deliberation on the part of the powers that have now been superseded by the County and District Councils, proper accommodation has at length been provided for the public attending the County Assize Courts and for the county officers in Londonderry. For years incessant complaints were made by judges, jurors, and others regarding the inadequate accommodation provided in the County-Courthouse for those having to attend Quarter Sessions and Assizes, while the sanitation on several occasions evoked strong expressions of discontent from members of the North-West Bar. Over and over again the matter formed the subject of heated debate before the Grand Jury, and many were the plans suggested by magistrates and associated correspondents for the relief of the congestion. All along these years the city was growing in population and importance, and with the progress and development of its industrial resources came the necessity for increased accommodation in every department of official life. Therefore it was not to be wondered at that the old Courthouse, built and furnished at a cost of £30,479 15s between the years 1813 and 1817, was found unsuited to the wants of the city and county almost a century later. After several attempts, Mr. A. G. Adair, County Surveyor, succeeded in having his plans adopted, but not without considerable opposition, and these having now for the most part been carried out in a manner which reflects the highest credit on him and the contractor, and while giving the much-needed accommodation, add another pleasing addition to the architectural features of the district. Herewith we have pleasure in presenting our readers with a sketch of the elevation of the new building facing Bishop-street, which has been completed in a substantial and workmanlike manner, and is now ready for the furniture. Entering from Bishop-street we pass through a swinging door, the panels of which are filled with beautifully tinted glass of choice design, and find ourselves in a commodious hall laid in concrete. On the right and left are the spacious well-lighted offices of the Clerk of the Crown and Peace, who, by the way, had many causes of complaint before he got so admirably suited as at present. Opening off one of these cheerful apartments, which have an outlook into Bishop-street, we enter a strong room 23ft. by 17ft., arched with brick, and made thoroughly fireproof. This is the chamber specially designed for the safe-keeping of the county records. It is fitted with a heavy iron door, and all the other requisites of the newest design. It may be mentioned that this chamber is capable of giving accommodation to the accumulated records of twenty years, the limited time they are allowed to remain in local custody. Afterwards they are transferred to Dublin for permanent storage. Also on the ground floor is a waiting room, 27ft. by 17ft., for special jurors. This was another of the long-felt wants in connection with the Courthouse. On the right-hand side of entrance hall an admirably arranged latrine has been provided for the use of the public during business hours. It is fitted with an automatic supply cistern and all other up-to-date requisites. We next enter a common hall with a similar glass door to that already mentioned, forming a porch, and an entrance door from what may be termed the courtyard, which is provided with a concrete platform communicating with the side entrance to the main building. In the hall is a fine commodious stairway formed of pitch pine, varnished with oak steps and handsome and substantial balustrade. Passing up this stairway we reach the upper storey, in which are situate the offices for the Secretary of the County Council, the County Surveyor, and the Solicitor for the County Council. The County Surveyor's office presents a charming view of

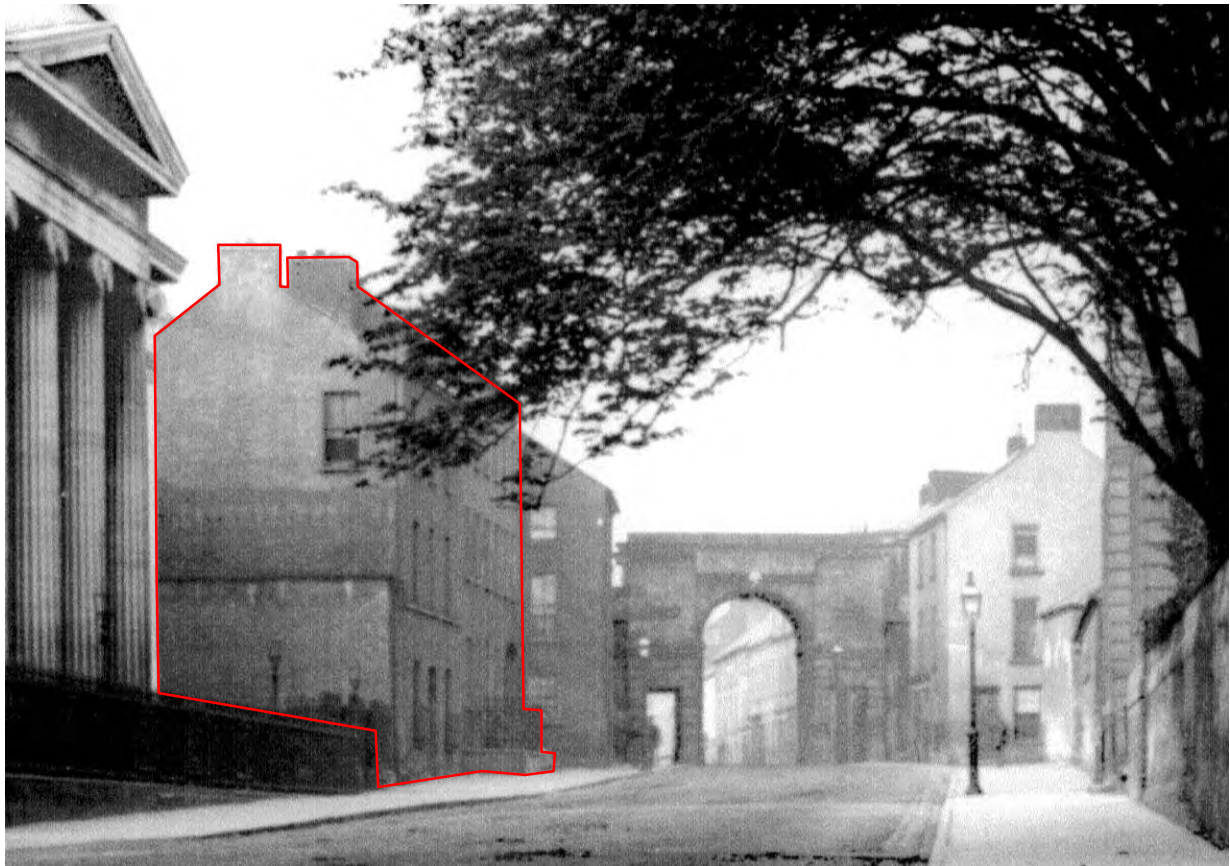
Bishop-street looking towards the River Foyle. The other rooms are equally cheerful and attractive apartments, with lofty ceilings, and well lighted. Latrines of the most modern design are provided on the opposite side of the landing, lined with white enamelled brick and finished in the most approved style. These are designed for the use of the several offices. In the old Courthouse the two rooms formerly occupied by the County Surveyor have now been thrown into one by removing the partition wall. This room, which is about 30ft. by 19ft., is designed for the use of petty jurors-in-waiting. A door opening therefrom gives access, by means of a small stairway, immediately into the jury-box on the western side of the Crown Court, a most convenient arrangement; and as if to make it still more complete and accommodating, bells have been provided, so that the jurors can be communicated with directly from both the Record and Crown Court in a moment by the clerk or official in charge. This room has also been amply provided with lavatory and latrine accommodation. At the side of the old building facing St. Columb's Court, on the ground floor a room has been provided for male witnesses attending the Sessions, Assizes, and other Courts, and a similar room has been transferred out of the old bar-room for female witnesses, who will no longer have to complain of the fatigue of standing about a crowded courthouse for days together without the luxury of a seat to sit upon. The latter room has also neat lavatory arrangements. The Crown Solicitor has been provided for, as have also solicitors who might wish to consult with their clients without leaving the Courthouse premises. Above the female witness room, in an entirely new apartment, to which access is given from the office formerly used by the County Treasurer, a handsome new room has been provided for the accommodation of the North-West Bar. This will be a boon likely to be appreciated by those who have hitherto experienced the discomfort of the former arrangement. The members of the Bar will also have the use of the large outer room, from which the old fixtures have already been removed. It is unnecessary to mention that all the sanitary arrangements of the building have been rendered as complete and effective as possible, and every source of complaint that it was possible to remedy has been removed—and removed too, it may be remarked, at a time when indications would lead most people to imagine that our county legislators have fallen in love with Coleraine as the centre for future deliberations. The Courthouse has now been rendered as complete as possible, and with the new buildings annexed it was thought all future cause of complaint was at an end. Now, however, the complaint comes from another quarter, and the grievance is not the want of accommodation, but the distance which County Councillors have to travel from the southern districts. The new building communicating with the old, the design of Mr. Adair provided that, by breaking a door from the upper storey of the new premises, access could be gained to what was known as the dining-room of the old Grand Jury, which could have been made a very accommodating and comfortable chamber for the new County Councillors. Whether they will approve of this arrangement or not, of course, is not a matter needful to discuss at present. Both the Grand Jury rooms, large and well lighted, are now vacant, and there is no suggestion as to what is likely to be done with them. Without them Mr. Adair has provided for all the wants which hitherto formed just cause for complaint, and he has done his work in a way which ought to commend itself to all parties interested. The contract was carried out by Messrs. Bright Brothers, Portadown, the amount being £5,500. In addition to this, of course, is the cost of the ground, about £1,800, and fees, bringing the entire cost up to about £8,000. The gas-fitting was executed by Mr. Aaron Baxter, J.P., and the ironmongery, including grates, &c. was supplied by Messrs. John Cooks & Co. The different apartments, it may be mentioned, have yet to be furnished.

Archive Maps

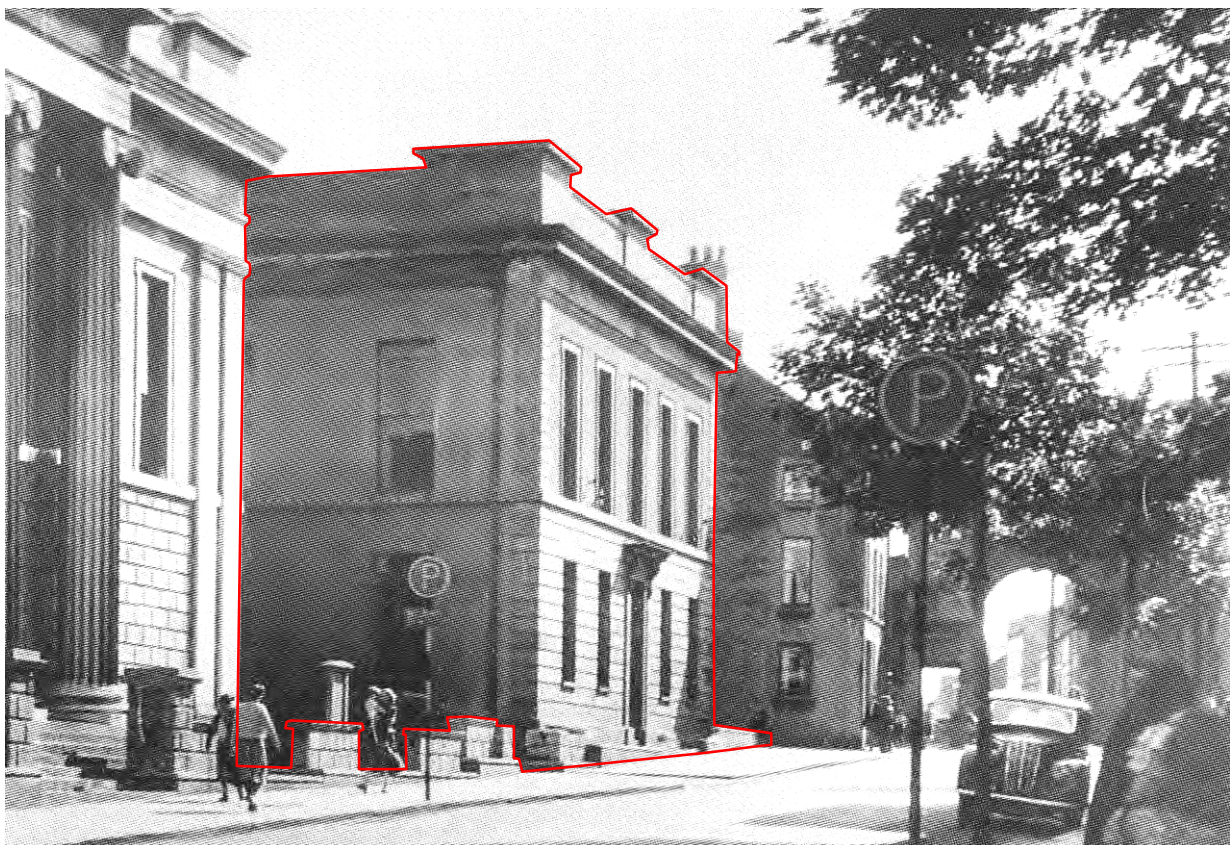


Ordnance Survey of Ireland, 1873

Archive Images



Houses on site of former Council Offices, Bishop Street, circa 1880



Former Council Offices, Bishop Street, circa 1950



Address	Vacant Site
Name	None
Map Reference	13
Plot Number	19
Listed Building Reference Grade	No N/A N/A
Conservation Area Reference	Yes Historic City
Building at Risk Reference	No N/A
Date of Construction	N/A
Original Use	Houses
Present Use	Vacant Site

Description

Vacant site immediately fronting onto Church Wall, adjacent Bishop Gate.

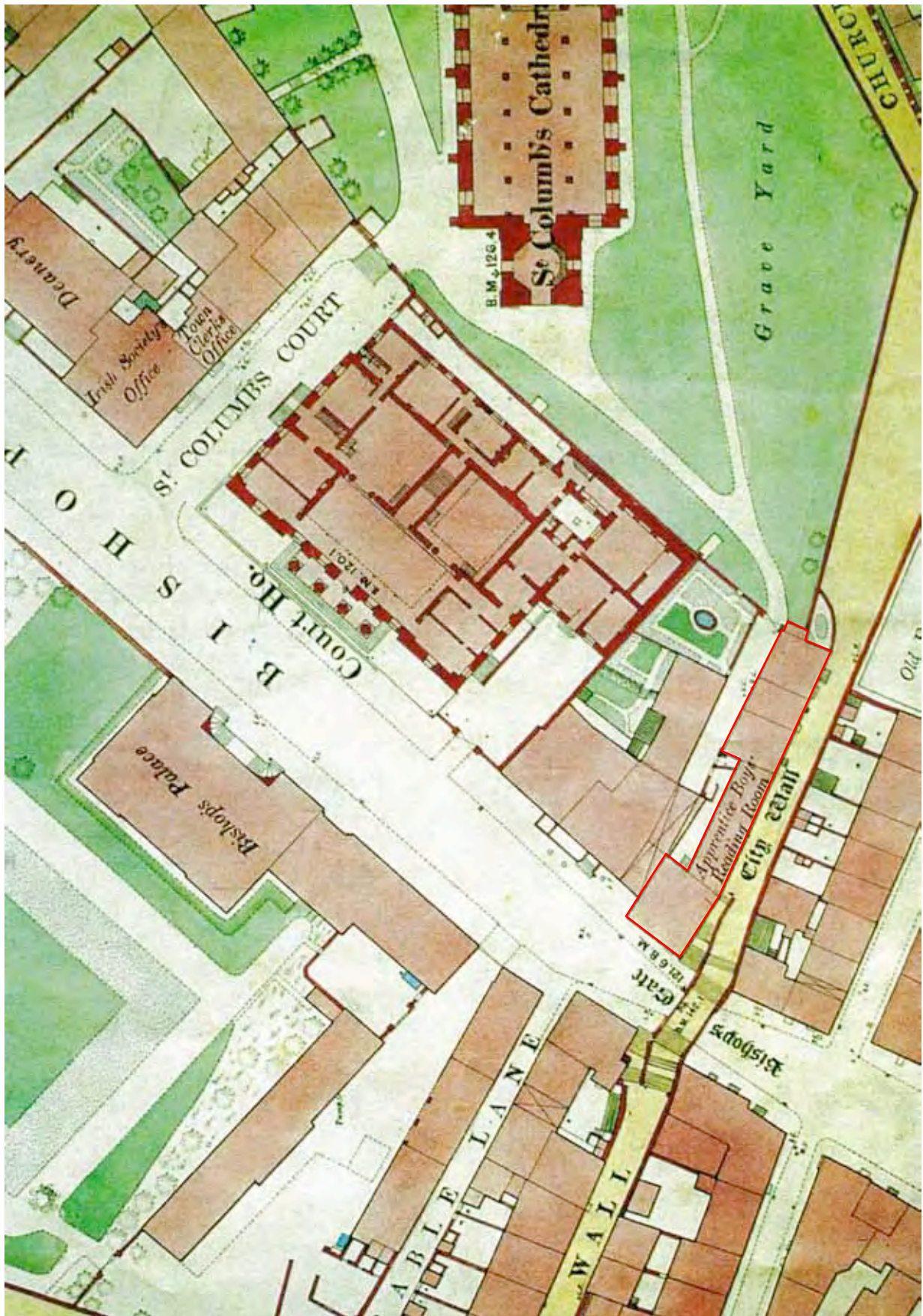
History

5No, three-storey houses built adjacent the city wall, before 1832, vacant from 1984, demolished circa 1990.

Owners/Occupiers

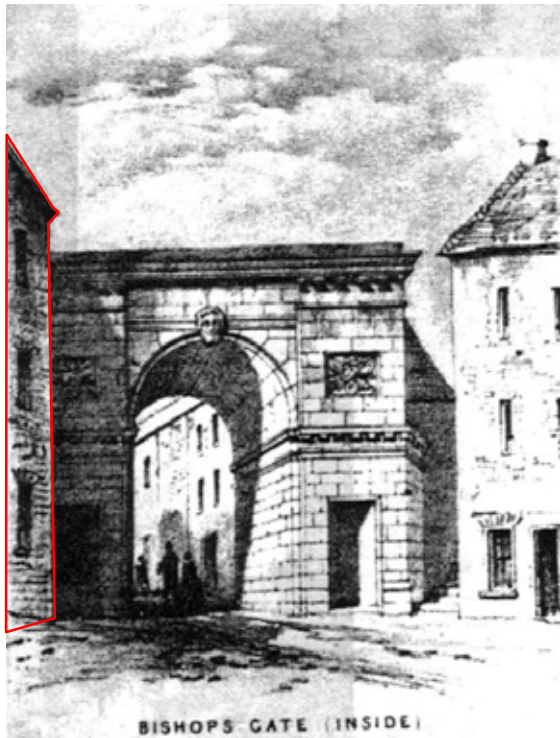
1890 Apprentice Boys Reading Room

Archive Maps

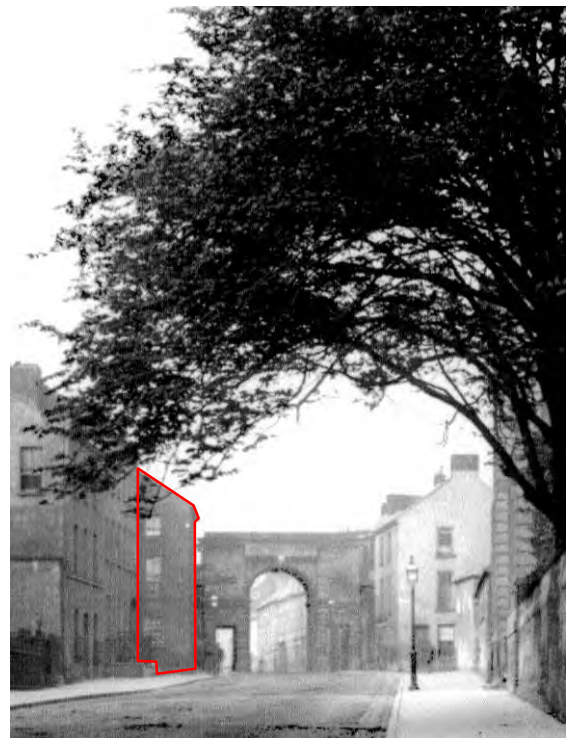


Ordnance Survey of Ireland, 1873

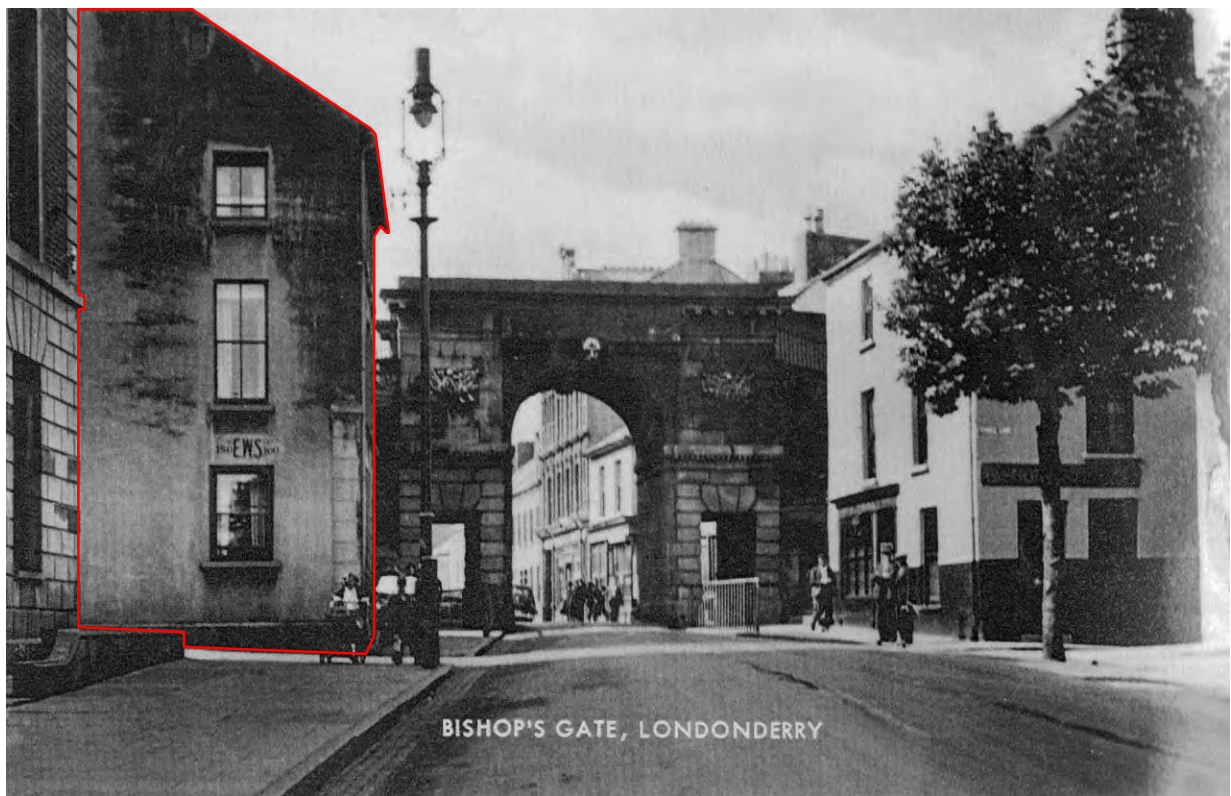
Archive Images



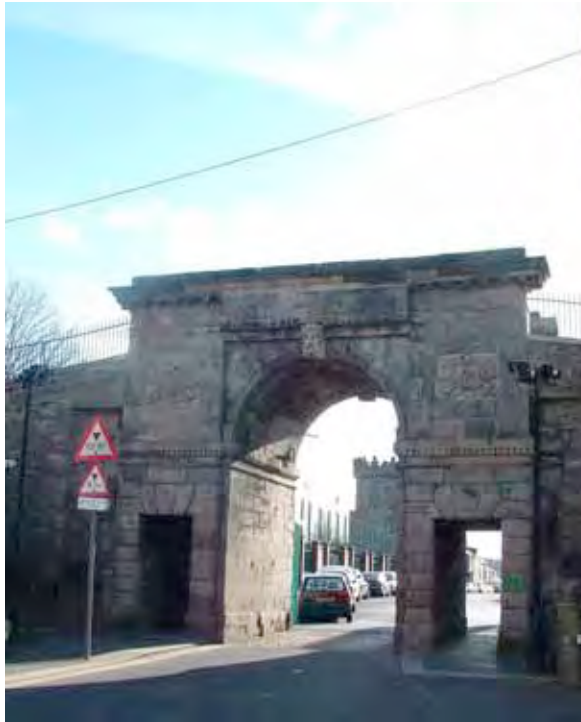
Bishop Gate, circa 1847



Bishop Gate, circa 1890



Bishop Gate, circa 1950



Name	Bishop's Gate
Earlier Names	None
Map Reference	13A
Plot Number	N/A
Listed Building Reference Grade	Scheduled
Conservation Area Reference	Yes Historic City
Building at Risk Reference	No N/A
Date of Construction	1789
Original Use	Triumphal Arch
Present Use	Triumphal Arch

Description

The four original gates of the city were called the Bishop's Gate, the Ship-quay Gate, the New Gate (now Butcher's Gate), and Ferry-port, or Ferry Gate (now the Ferry-quay Gate): two others, called commonly the New Gate and the Castle gate, but not by authority, were subsequently added. Between 1805 and 1808 the first three were rebuilt, at an expense of £1403 3s. The Bishop's Gate and the Ship-quay Gate are alone embellished. The former is a triumphal arch, erected to the memory of William III, in 1789, by the corporation, with the concurrence of the Irish Society, at the centenary of the opening of the gates. On each side there is a lateral passage, and on the summit a platform, on which stood a pedestal, long since removed, which was intended for a statue of William III. The key-stones of the arch are each ornamental with a warrior's head; and over each lateral passage is a tablet, exhibiting military devices. This gate is a chaste architectural work, designed by the late Henry Aaron Baker, Esq., R.H.A.; and the sculpture was executed by the late celebrated Edward Smyth.

Ordnance Survey Memoir of Londonderry, Colby, 1837

1789. Architect: Henry Aaron Baker

Rebuilt as a triumphal arch to the memory of William III, a well proportioned strong form, with semi-circular central arch, and having on each side a lateral passage with trabeated head. The arch is finished in sandstone with well modelled cornices. The sculpted panels illustrating military trophies over the side passages were executed by Edward Smyth, one of the greatest of Irish sculptors and author of the river-gods on the custom house, Dublin. The keystones of the arch, also by Edward Smyth, are finished with sculpted heads. That looking north-east, dated 1689, represents the River Foyle; and that looking south-west, dated 1690, represents the River Boyne. On either side of the arch are steps of dramatic and medieval character giving access to the walls.

Historic Buildings in and near the City of Derry, Ulster Architectural Heritage Society, 1970

Bishop's Gate, so called since the early 17th century, though rebuilt as a triumphal arch by Henry Aaron Baker in 1789 on the centenary of the siege. The style has the blockish cubic quality associated with French neo-classical designs. A high central arch flanked by pedestrian passages with channelled horizontal rustication and exaggerated flat voussoirs. There is no attic, only a heavy dentil cornice set above the two side passageways and breaking into a solid block of masonry (intended to be carved but never finished?) above the keystone of the central arch. Martial trophies on each face were carved by Edward Smyth of Dublin, who also did the keystone heads of the River Foyle looking SW and dated 1689 and of the River Boyne looking NE and dated 1690.

The Buildings of Ireland, North West Ulster, Alistair Rowan, 1979

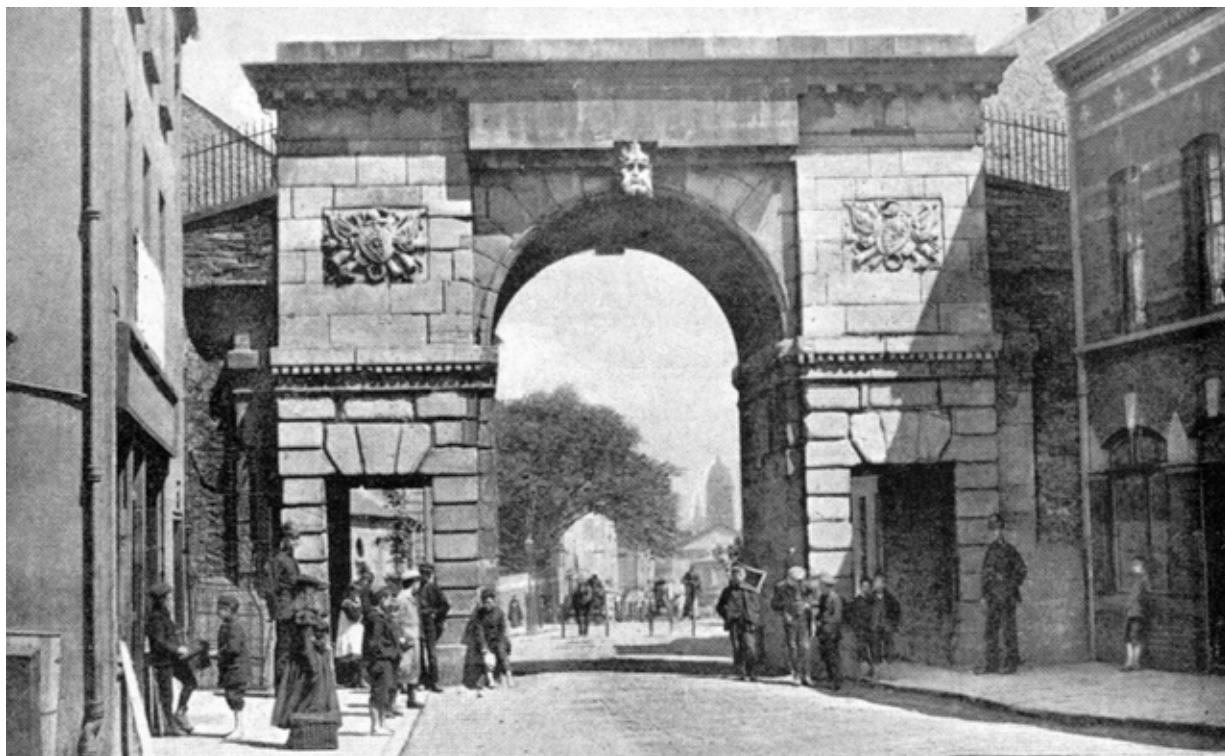
Archive Images



Design for the Bishop's Gate (without)



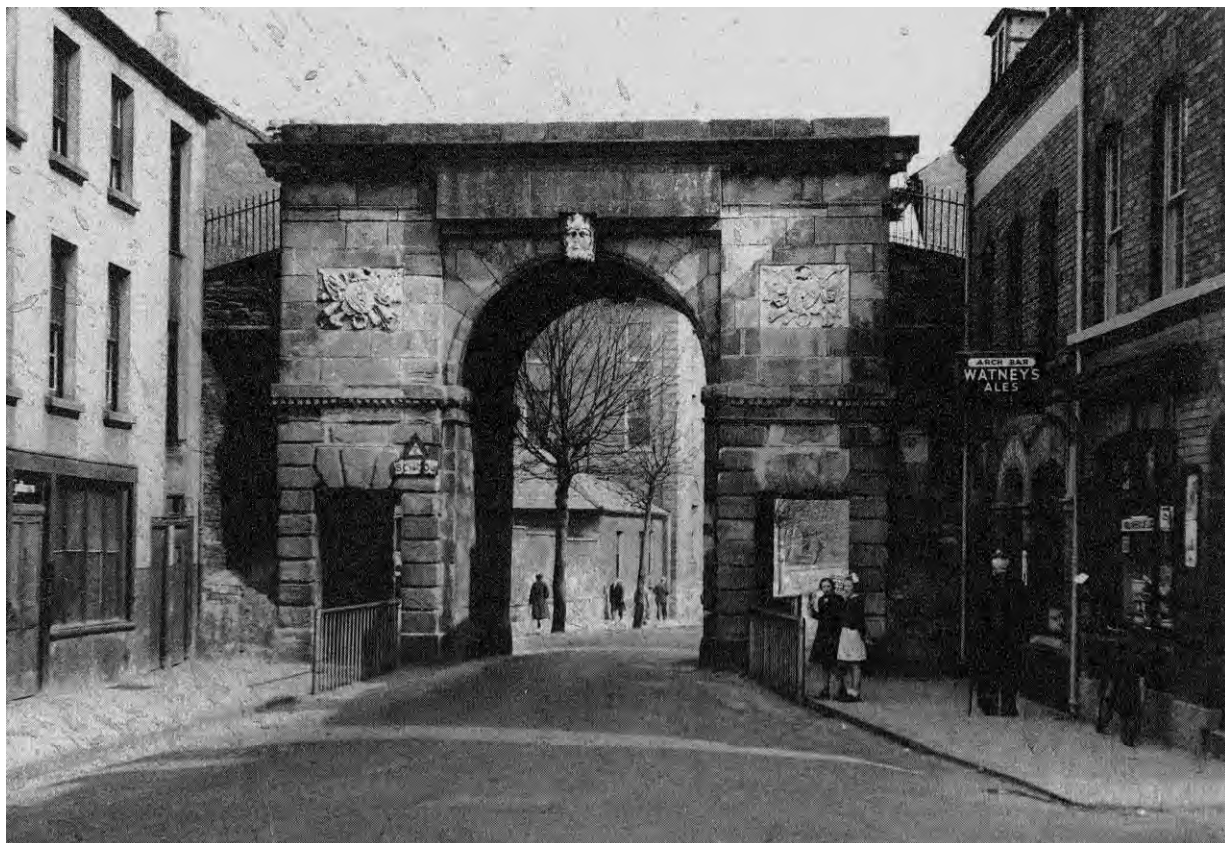
Bishop's Gate (within), circa 1847



Bishop's Gate (without), circa 1890



Bishop's Gates (without), circa 1900



Bishop's Gate (without), circa 1950



Bishop's Gate (within), circa 1950



Bishop's Gate (without), 2005



Address	27 Bishop Street
Name	Army Barracks
Map Reference	14
Plot Number	20,21
Listed Building Reference Grade	No N/A N/A
Conservation Area Reference	Yes Historic City
Building at Risk Reference	No N/A
Date of Construction	
Original Use	Army Barracks
Present Use	Army Barracks

Description

Army Barracks located on site of former Bishop Palace stables, Stable Lane, No. 27 Bishop Street and part of Cunningham Row (Mall Wall). Random, stone cladding to watch tower, diagonally set to street frontage, with protected observation windows at low level. Observation post and protective grilles removed 2005. Profiled metal security fence to boundary.

History

Site of Bishop Palace Stables, No.27 Bishop Street and Cunningham Row (Mall Wall), a group of 7No. three-storey houses to the rear, adjacent city wall. Nos. 4-7 Cunningham Row demolished 1890 for First Derry School (1893), now Verbal Arts Centre. Nos.1-3 Cunningham Row vacant 1975 and subsequently demolished. No.27 Bishop Street demolished. Subsequently site used as British Army Barracks.

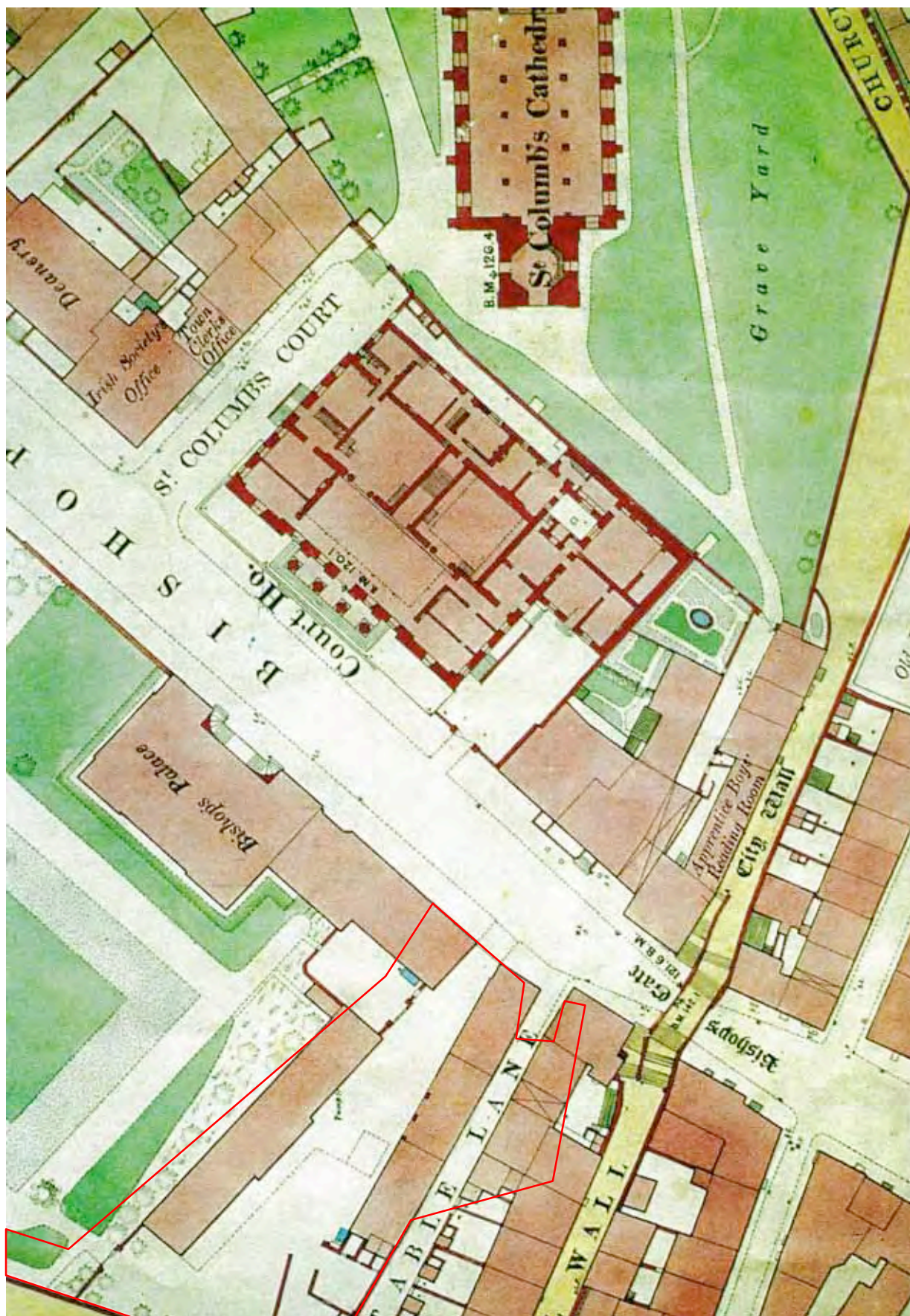
Owners/Tenants

27 Bishop Street

1832	Paul Gillespie
1858	Laughlin Gillespie
1871-1884	James McGrath
1893-1903	Mary Jane McGrath
1909	R B Hughes
2005	British Army
2006	Vacant

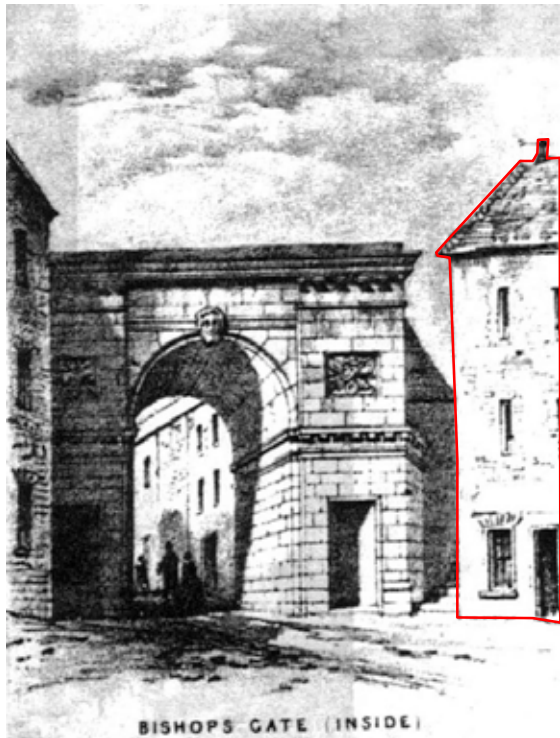
Derry Almanac

Archive Maps

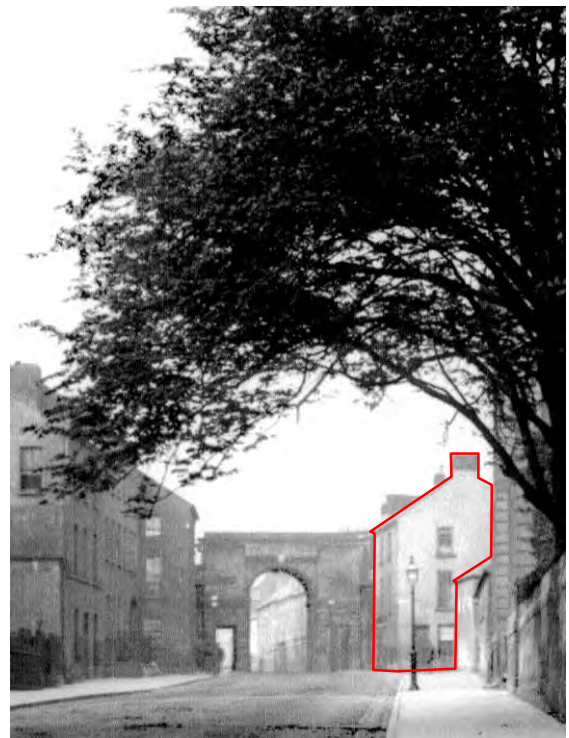


Ordnance Survey of Ireland, 1873

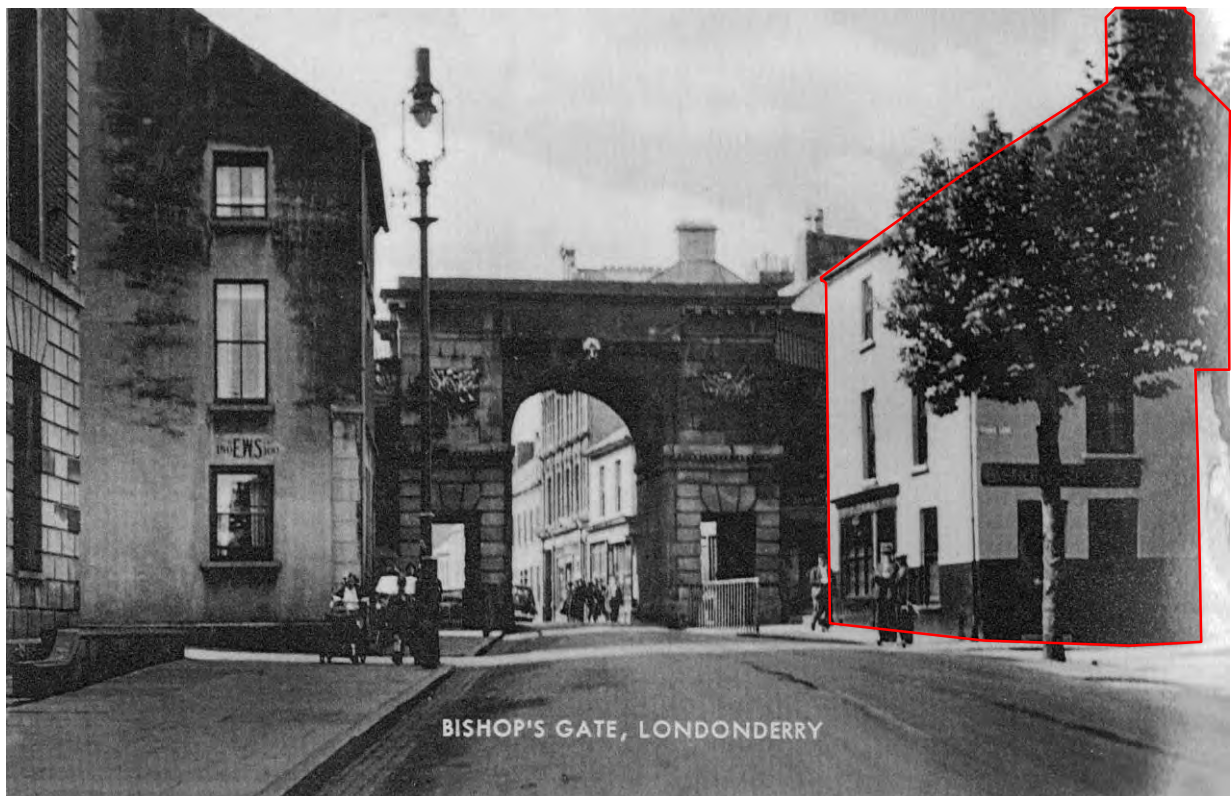
Archive Images



Bishop's Gate, circa 1847



Bishop's Gate, circa 1890



Bishop's Gate, circa 1950



Address	Bishop's Palace
Name	Bishop's Palace
Map Reference	15
Plot Number	21
Listed Building Reference Grade	Yes HB01/19/006 B1
Conservation Area Reference	Yes Historic City
Building at Risk Reference	No N/A
Date of Construction	1753
Original Use	Bishop's Palace
Present Use	Masonic Hall

Description

The building is a three-storey red brick structure with two projecting wings between which an entrance portico has been inserted, with slender coupled columns and asymmetrically placed steps. It is an imposing town house with two acres of grounds and would be improved by re-painting.

Historic Buildings in and near the City of Derry, Ulster Architectural Heritage Society, 1970

Bishop's Palace, the Masonic Hall since 1945, a grandly scaled five-bay, three-storeyed block, free-standing, with the remnants of the Bishop's garden to the left and right (now all tarmac). The centre three bays are recessed to give the building a typically early 19th century duality with paired projecting ends that have a look of Bowden about them. Limited traces of 18th century detail remain inside.

The Buildings of Ireland, North West Ulster, Alistair Rowan, 1979

History

1753. This until 1945 was the Bishop's Palace, and is now the local headquarters of the Masonic Order; it is near the site of the Augustinian Abbey. A building was erected there at the beginning of the plantation by the Londoners for the Bishop of Derry. A new building was erected in the episcopate of William Barnard, 1747-68, and was largely reconstructed by the Earl of Bristol, when Bishop, 1768-1803. In 1798 it was used as a barracks and the gardens became a parade ground opening onto the walls. In 1803, William Knox, when he became bishop, repaired it after its use by the military.

Historic Buildings in and near the City of Derry, Ulster Architectural Heritage Society, 1970

Several palaces are supposed to have stood here; one of circa 1753 was rebuilt by Bishop Barnard (1747-68) and largely reconstructed by his successor the Earl Bishop (1768-1803). In 1798 the palace was used as a barracks. It was repaired by Bishop Knox (1803-31) after its use by the military, and what is here now must be Knox's work, distinctly regency in character, with shallow hipped roofs and overhanging eaves.

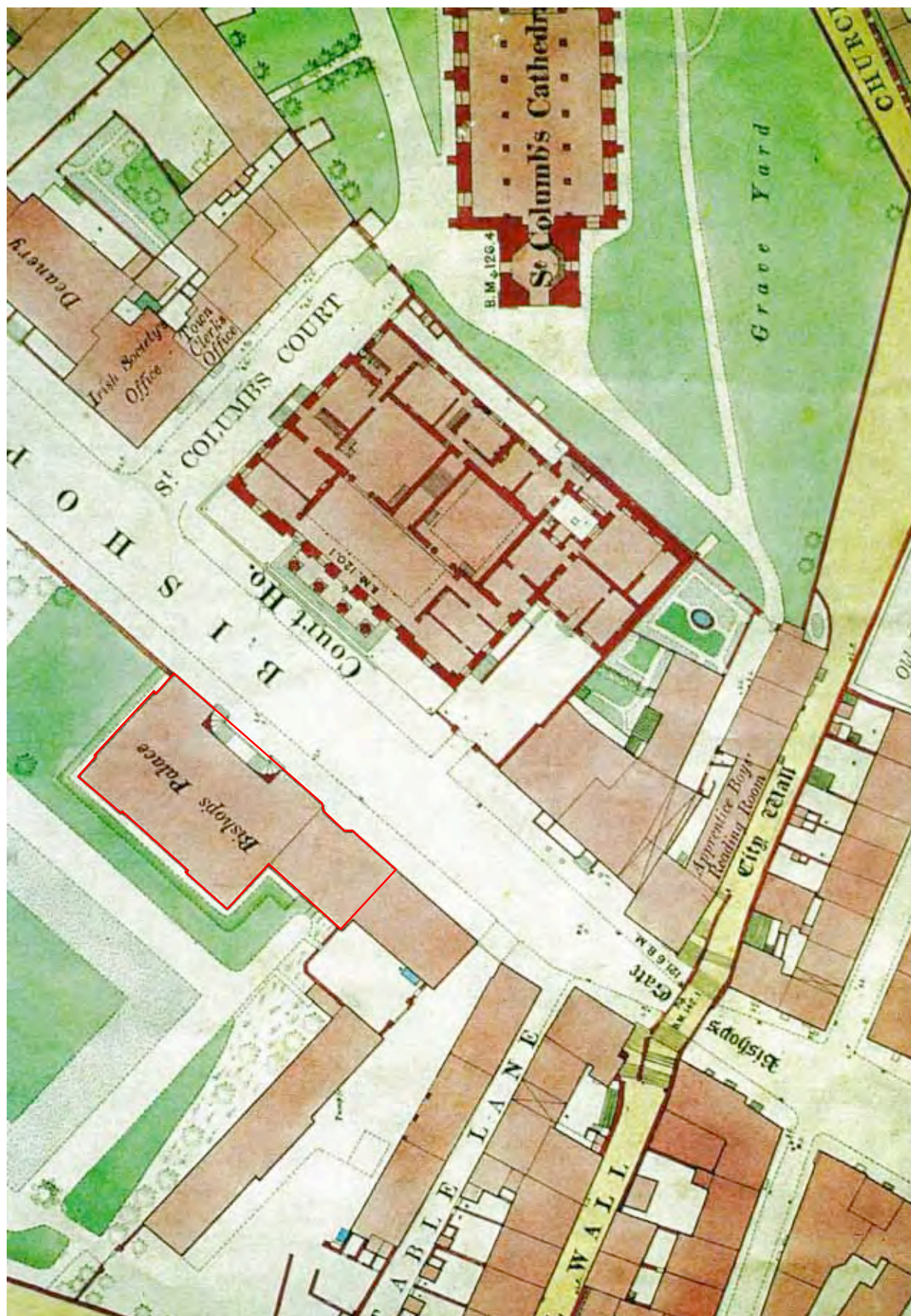
The Buildings of Ireland, North West Ulster, Alistair Rowan, 1979

Owners/Tenants

Bishop's Palace

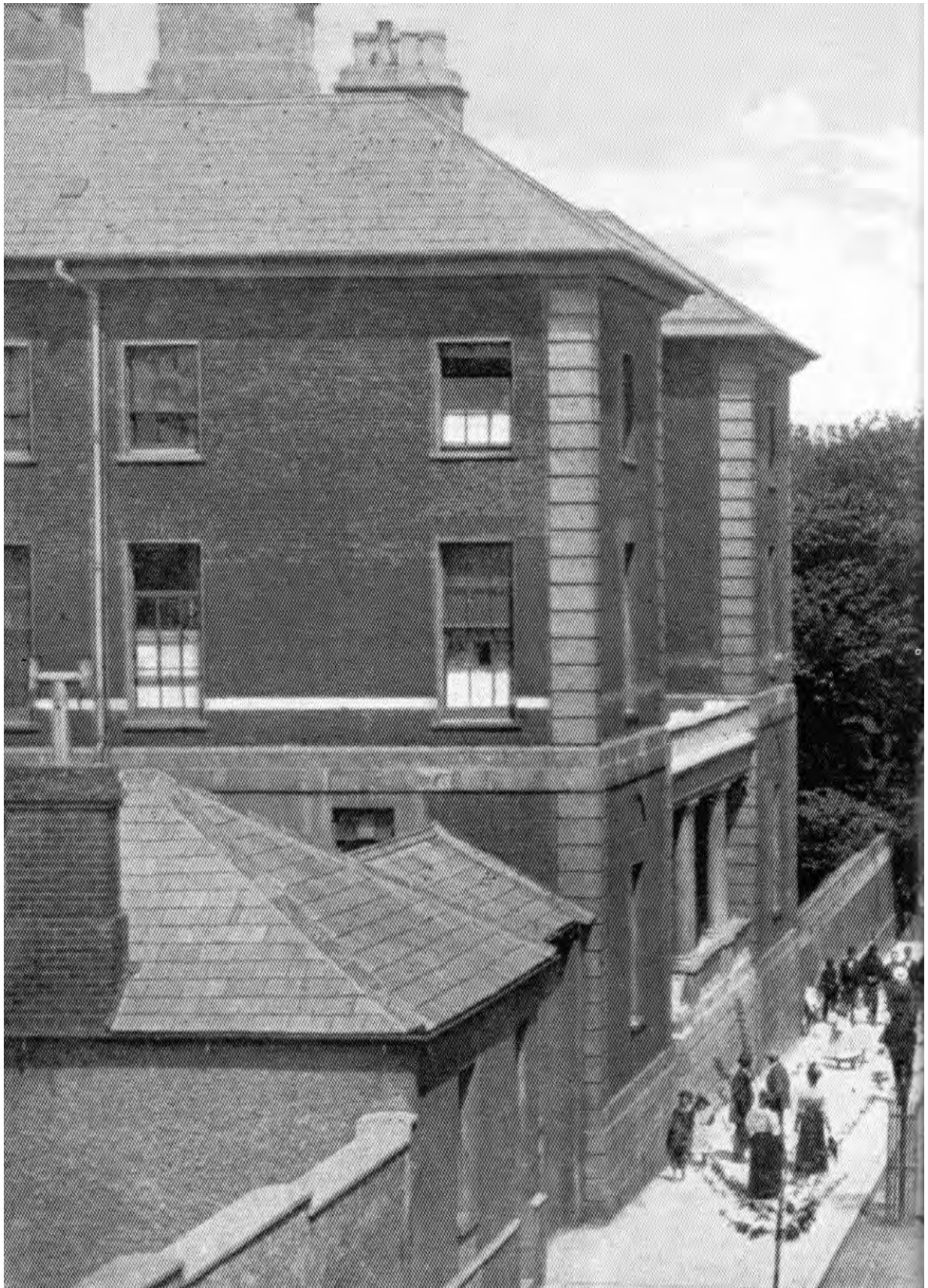
1753	William Barnard
1768	Frederick Augustus Hervey (4th Earl of Bristol)
1803	William Knox
1831	Richard Ponsonby
1853	William Higgin
1867	William Alexander, tr. to Armagh
1896	George Alexander Chadwick
1916	Joseph Irvine Peacocke
1945-2006	Masonic Lodge

Archive Maps



Ordnance Survey of Ireland, 1873

Archive Images



Bishop's Palace, Bishop Street, circa 1900



Address	Bishop Street Car Park
Name	Bishop's Palace Garden
Map Reference	16
Plot Number	21
Listed Building Reference Grade	No N/A N/A
Conservation Area Reference	Yes Historic City
Building at Risk Reference	No N/A
Date of Construction	1969
Original Use	Bishop's Palace Garden
Present Use	Surface Car Park

Description

The former Bishop's Palace gardens, now a surface car park.

History

In 1798 it [Bishop's Palace] was used as a barracks and the gardens became a parade ground opening onto the walls...The grounds contained some interesting whinstone-built stables with quoins, doors and windows dressed in sandstone. The stables were recently pulled down and the grounds converted to a car park. All the trees were removed except one fine beech.

Historic Buildings in and near the City of Derry, Ulster Architectural Heritage Society, 1970

Owners/Tenants

See RS15 Bishop's Palace.



Address	23A Bishop Street
Name	None
Map Reference	17
Plot Number	24
Listed Building Grade Reference	No N/A N/A
Conservation Area Reference	Yes Historic City
Building at Risk Reference	No N/A
Date of Construction	
Original Use	House
Present Use	Office

Description

Corner building, three-storey with basement. Two-bay brick façade and end gable. Natural slate roof with 2No.dormers and substantial end gable chimney. Four-over-four vertical sliding sash painted timber windows. Six panel front entrance door with fanlight and scrolled brackets.

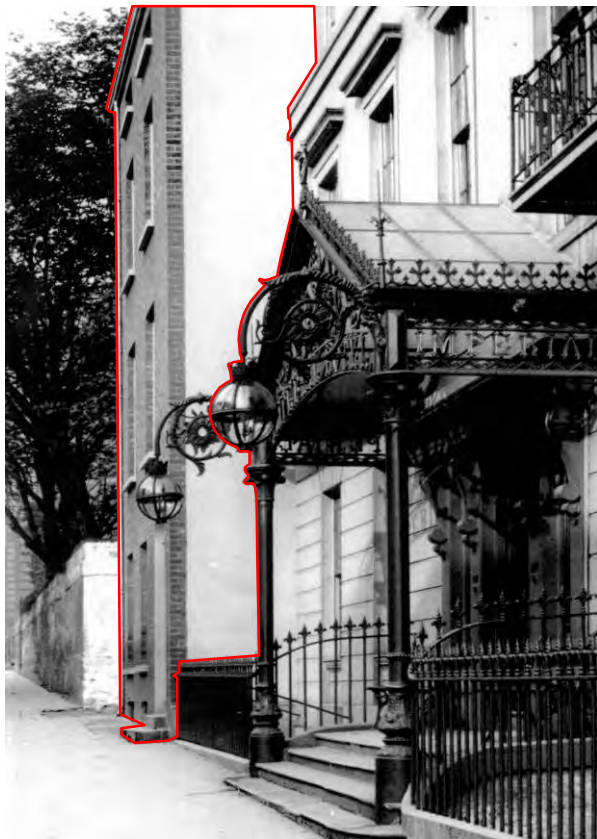
Owners/Tenants

23A Bishop Street

1832	David Hamilton
1858	William Hannigan
1871-1893	Bernard Hannigan
1903	Bernard Hannigan, William McKee, John Clothier
1909	Bernard Hannigan, Joseph McLucas, James Hamilton

Derry Almanac

Archive Images



23A Bishops Street, circa 1890



Address	15 Bishop Street
Name	None
Map Reference	20
Plot Number	28
Listed Building Reference Grade	No N/A N/A
Conservation Area Reference	Yes Historic City
Building at Risk Reference	No N/A
Date of Construction	
Original Use	Retail
Present Use	Bar/Off Licence

Description

Corner building. Two-storey, three-bay, smooth rendered façade to Bishop Street with rendered quoins. One-over-one, sliding sash windows at first floor, moulded surrounds. Hipped, slate roof. Traditional style shopfront.

Owners/Tenants

15 Bishop Street

1738	John Darcus
1827	Commissioners for County Court, John Gwynne
1832-1834	James Fisher
1858	James Reid
1874-1894	W.G.O'Doherty
1897	Mrs O'Doherty
1901-1925	W.G.O'Doherty
1927	W.G.O'Doherty Ltd
1930-1953	W.G.O'Doherty & Co.

Derry Almanac

Archive Articles

ESTABLISHED 1871.

W. G. O'DOHERTY & CO.,

Wholesale and Retail Grocers,

Wine and Spirit Merchants,

15, BISHOP STREET,

LONDONDERRY.

TELEPHONE 146.

Archive Images



Bishop Street, circa 1890



Address	13 Bishop Street
Name	Probate Office
Map Reference	21
Plot Number	29
Listed Building Reference Grade	Yes HB01/19/010 B2
Conservation Area Reference	Yes Historic City
Building at Risk Reference	Yes 01/19/001
Date of Construction	1861
Original Use	Probate Office
Present Use	Vacant

Description

1861: The Probate Office is a small two-storeyed red brick structure with strong articulation of openings, with curved-headed doorway and windows. There is a brick setback in the window reveals, which greatly adds to the design strength of this small building. The function of the building is neatly displayed in simple modelled lettering on the façade. At present the building is handsomely painted in brick-red direct onto the brickwork, so that the texture is retained, and the lettering picked out in gold.

Historic Buildings in and near the City of Derry, Ulster Architectural Heritage Society, 1970

District Probate Office, 1861, a two-storey brick block with checked window reveals, completely painted crimson.

The Buildings of Ireland, North West Ulster, Alistair Rowan, 1979

This building, the former District Probate Office, was added not long after the Deanery in 1861. It is a small two-storey, three-bay, brick-built building, now painted white, with segmental-headed window and door openings and a tall, slender, corniced chimney, which adds significantly to the character of the building. No longer in use, the building's external paintwork is beginning to flake, although generally the building appears to be in a fair condition.

Buildings at Risk, Northern Ireland, Volume 7, 2005

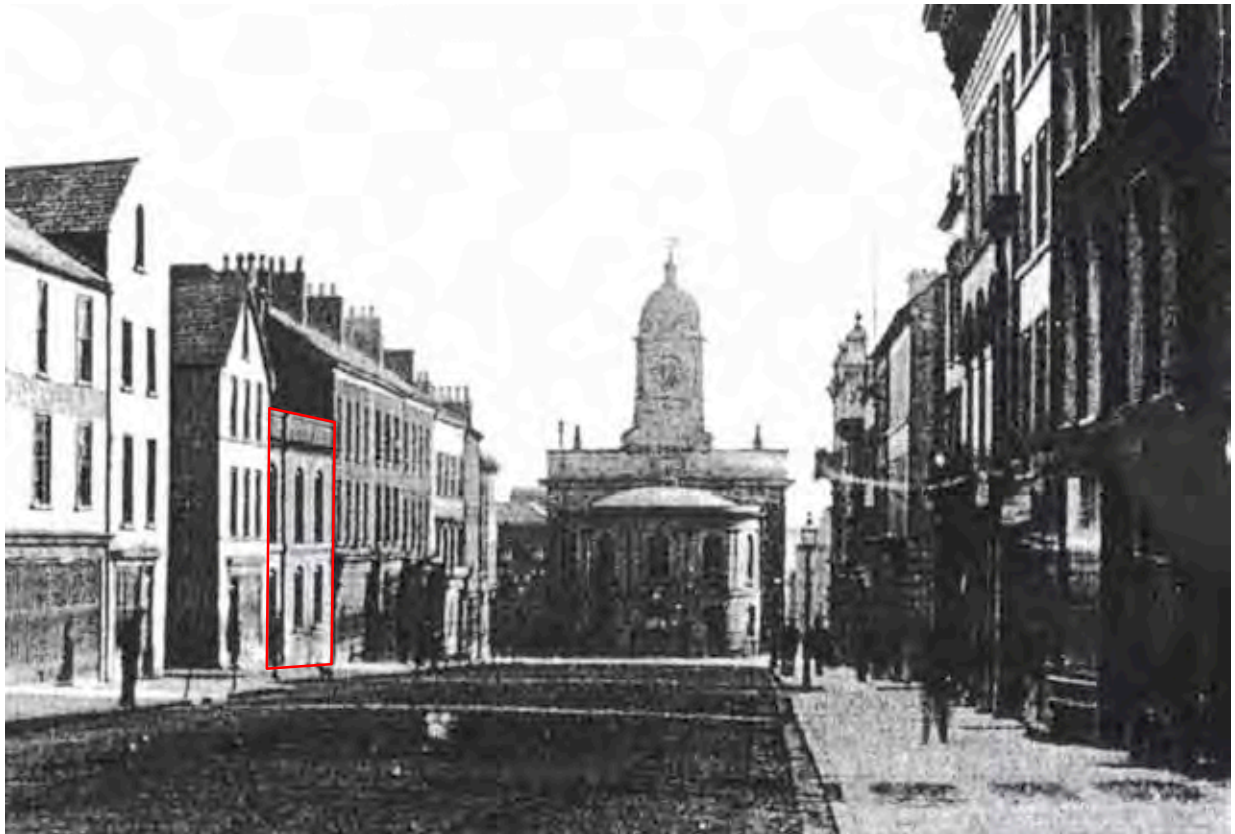
Owners/Tenants

13 Bishop Street

1861-	District Probate Registry
1884	J. Walsh, Probate Office
1893	John A Walsh, Probate Office
1903-1909	Howard A Nelson, Probate Office
2006	Vacant

Derry Almanac

Archive Images



Bishop Street, circa 1890



Address	11 Bishop Street
Name	None
Map Reference	22
Plot Number	30
Listed Building Grade Reference	No N/A N/A
Conservation Area Reference	Yes Historic City
Building at Risk Reference	No N/A
Date of Construction	
Original Use	Retail
Present Use	Retail

Description

Three-storey, four-bay smooth rendered façade, diminishing scale, natural slate roof. One-over-one vertical sliding sash painted timber windows, moulded window surrounds. Remnants of traditional shopfront remain including cornice and highly decorated console brackets.

Owners/Tenants

11 Bishop Street

1738	James Anderson
1827	David Moore & Sir G.Hill
1832-1834	John Denison
1858	John McNeely
1874-1876	John & Robert Neeley
1877-1884	Robert Neeley
1887	M.Harbison & Co.
1889-1894	James Harbison
1897-1901	M.Harbison
1903-1916	Foster & Co.
1925-1953	James W.Foster & McDonald Bros.Ltd
2006	Henderson Music

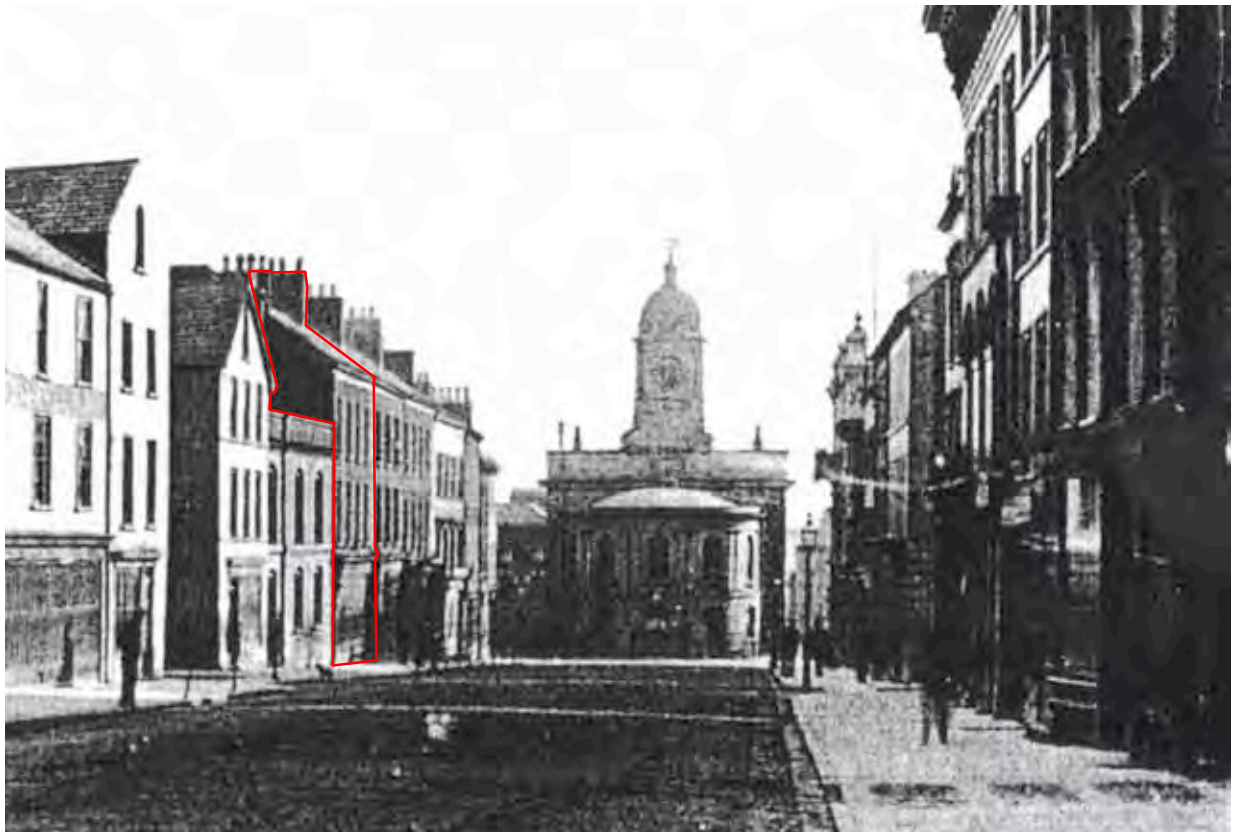
Derry Almanac

Archive Articles

HARBISON & Co.,
Merchant Tailors & Outfitters
MANTLE ^{AND} COSTUME MAKERS,
AND
MILLINERY WAREHOUSE,
11, Bishop Street, Londonderry.
HOSE, GLOVES, TIES, COLLARS, CUFFS, &c.,
From Best Manufacturers, at Lowest Possible Prices.
INSPECTION and TRIAL SOLICITED.

Derry Almanac, 1894

Archive Images



Bishop Street, circa 1890



Address	7-9 Bishop Street
Name	None
Map Reference	23
Plot Number	31
Listed Building Grade Reference	No N/A N/A
Conservation Area Reference	Yes Historic City
Building at Risk Reference	No N/A
Date of Construction	
Original Use	Retail
Present Use	Retail

Description

Three-storey, seven-bay, smooth rendered façade with quoins. Slate roof, no chimneys. One-over-one vertical sliding sash painted timber windows, with plain projecting surrounds. Contemporary shopfront and signage.

Owners/Tenants

7 Bishop Street

1832	William Gamble
1858	Alex & Robert Black
1871	Alexander Black
1884	Robert P Sawers
1893	Mrs Margaret P Sawers
1903-1909	Sawers & Co.
2006	Poundstretcher

9 Bishop Street

1832	James Millan
1858-1884	Robert Campbell
1893-1903	David Campbell
1909	Millar & Beatty Ltd
2006	Poundstretcher

Derry Almanac

Archive Articles

Campbell's Cabinet and Upholstery Warehouse, Bishop Street, Londonderry.—Among the many attractive shops and warehouses that have contributed to make Bishop Street one of the most favourite commercial thoroughfares in Londonderry, there are none perhaps that deserve a more prominent place in these pages than Campbell's great warehouse, which, apart from its importance as an emporium of direct supply for the people at large, is accounted to be by far the leading manufactory in the cabinet-making and upholstering line in the North and West of Ireland combined. The firm was founded over half a century ago by Mr. Robert Campbell, who, in the ordinary course of events, was succeeded by his son, Mr. David Campbell, in the year 1882, although the latter gentleman had for many years previously been the active director of the concern, and had helped materially to elevate it to its present proud position. The premises, as they at present stand, are very extensive, presenting a grand façade, thirty-six feet wide, and four storeys in height, to the busy thoroughfare in which they are fortunately situated, and extending backwards for a distance of one hundred and twenty feet. The whole of this noble edifice is used as a warehouse, most of the goods exhibited being manufactured by the firm in their large workshops to the rear, the entire premises covering an area of nearly an acre of ground. The four floors of the front building, each measuring one hundred and twenty feet by forty-three feet, are apportioned as follows:—The ground floor is utilised principally as a carpet warehouse, the handsomely-appointed offices being at the rear of the show-rooms; here a splendid selection of goods is always available, and Mr. Campbell makes it a point to order all his own carpets to be made in seasonable patterns, of superior designs and colouring, calculated to withstand the hardest wear and tear, and to retain their pristine appearance to the end. He always holds a splendid line in Brussels, royal Axminsters, tapestry, and Kensington art carpets, which altogether

form a very splendid exhibition well worthy of a visit, if only to be viewed. The first floor is reserved chiefly for dining and drawing room furniture *en suite*; the second storey for bedroom furniture, and the top floor hall and library furniture of every description. In every one of these departments, Mr. Campbell's rule has always been to exclude anything of an inferior, or even doubtful character, and this has unquestionably led to the establishment of public confidence in the quality of the articles emanating from his firm. He is prepared to furnish the humblest cot, or the grandest hotel or palace, with every requisite at the shortest possible notice, and in any desired style, as most of the work is executed on the premises under his personal supervision, and supplied at first cost. An important point is, that all the bedding and mattresses are made on the premises, none but the very best materials being used in their manufacture. The front premises moreover contain the upholstering, French polishing, gilding, and general repairing workshops, each department being very fully equipped, and all work done with care and despatch. The workshops and factory proper, however, are located to the rear in a great three-storied building, covering an area of some sixty by forty feet. The ground floor of this structure is the machinery department, and is fitted with all the appliances and tools required for high-class cabinet work of every description, such as circular saws, band saws, moulding and squaring machines, and the like, the whole being driven by a steam engine of twelve horse-power. The upper floors are utilised as general workshops, and the entire premises, including the front show-rooms, occupy an area of fully three hundred feet by forty-five feet, giving ample employment to a staff of from fifty to sixty skilled hands, and catering for the wants of a first-class connection, which extends throughout the Northern and Western counties of Ireland. Personally, Mr. Campbell occupies a very influential position in business circles, and by his integrity, sound judgment, and courtesy, has deservedly gained the confidence and support of all classes of the community.

Industries of The North of Ireland, 1888-1891

CABINET AND UPHOLSTERY WAREROOMS.

VERY LARGE AND VARIED STOCK IN
Dining-room, Drawing-room, Bed-room & Hall Furniture.
CARPETS, CURTAINS, FLOOR CLOTHS, LINOLEUMS, &c.

Every Requisite for ARTISTIC FURNISHING to be had at
CAMPBELL'S, { BISHOP STREET,
LONDONDERRY.

Derry Almanac, 1889

GABINET AND UPHOLSTERY WAREROOMS.

Very Large and Varied Stock in
DINING-ROOM, DRAWING-ROOM, BED-ROOM

AND
Hall Furniture.
Carpets, Curtains, Floor Cloths,
LINOLEUMS, &c.



Every Requisite for Artistic Furnishing
to be had at

**CAMPBELL'S, BISHOP STREET,
Londonderry.**

Derry Almanac, 1894

CAMPBELL'S ARTISTIC FURNITURE.

Cabinet and Upholstery Warerooms, BISHOP STREET, Londonderry. over.

Derry Almanac, 1901

CAMPBELL'S
Cabinet and Upholstery Warehouse,
BISHOP STREET, LONDONDERRY.

HIGH-CLASS FURNITURE

For Drawing-Room, Study, - -
- Dining-Room, Library, and Hall.
Choice Louis Cabinets, Sheraton Drawing-Room Suites.

A LARGE SELECTION OF
OVER-MANTELS,
In Ivory and Gold, &c.
Very handsome Louis Mantels and Over-Mantels; also in Oak, Walnut, and
Chippendale Mahogany.

AN IMMENSE STOCK OF
BED-ROOM SUITES,
- - In all the Leading Styles. - -
Brass and Iron Bedsteads, Wire-woven Mattresses, Hair Mattresses, Bolsters
and Pillows.

A Large Lot of Japanese Screens.
Occasional Chairs, Tables, and Wicker Furniture in endless variety.

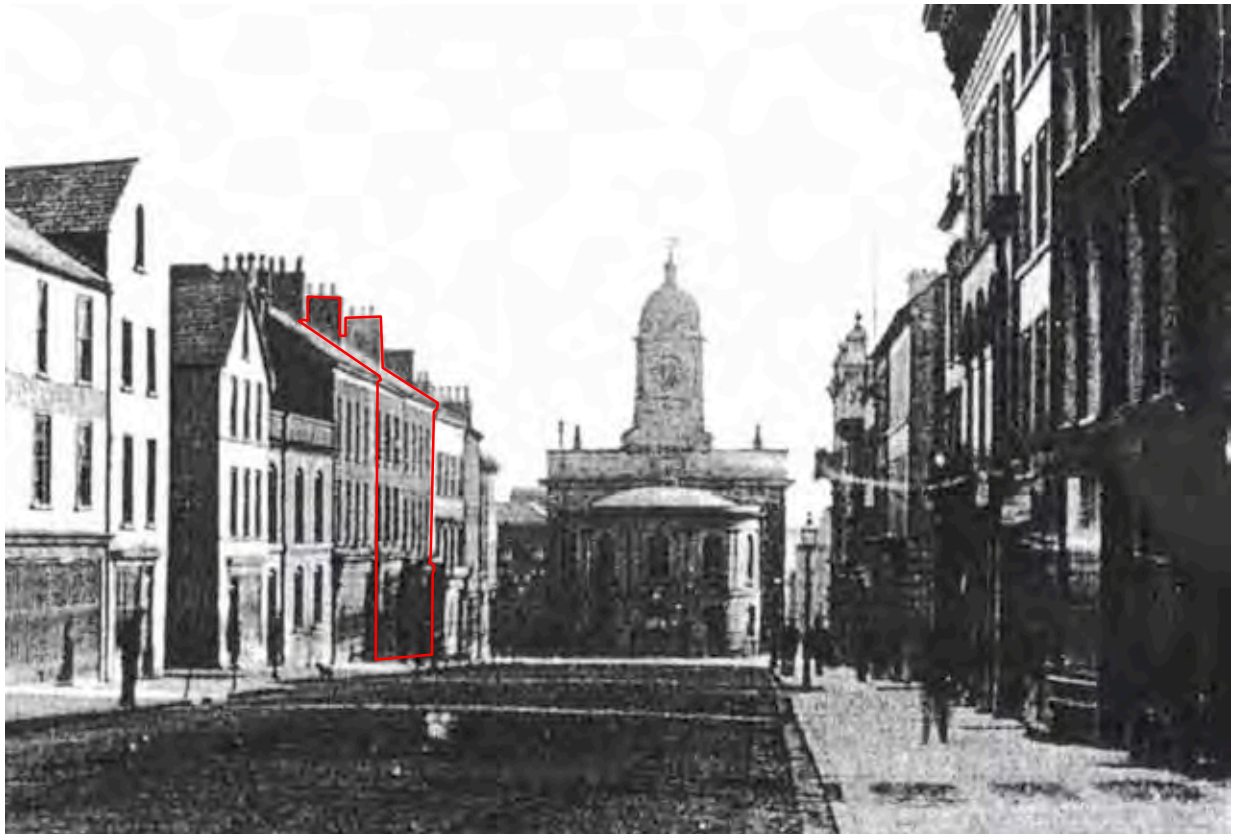
REVOLVING-TOP OFFICE DESKS—Full Size, £6 10s.
Axminster, Brussels, and Tapestry Carpets.
Art Squares, Cork Carpets, Linoleums, and Floor-cloths.
Beautiful Goods in Tapestries, Draping Silks, Art Serges, &c.

CURTAINS, IN SILK, CHENILLE,
TAPESTRY, &c., &c.
Special Attention given to Artistic Draping of WINDOWS, DOORS,
PIANO BACKS, MANTELS, &c.

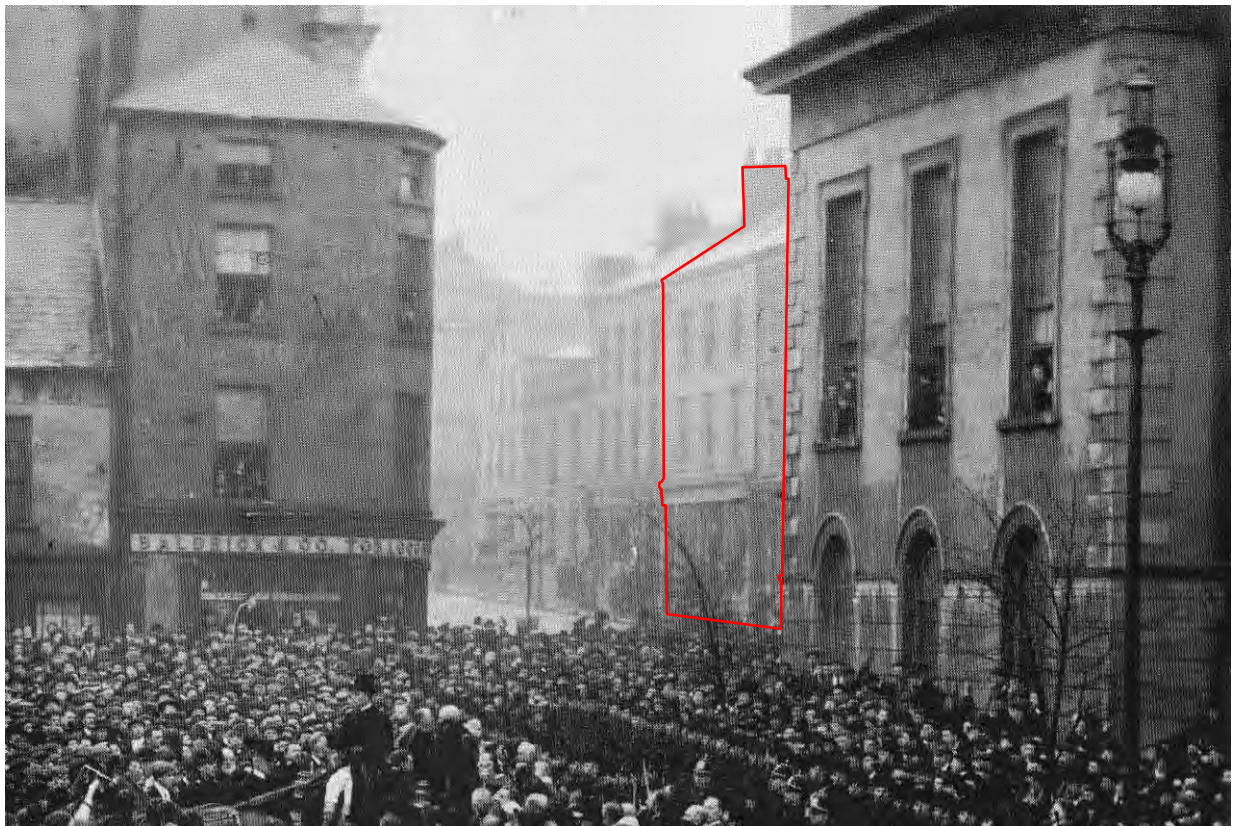
STEAM CABINET WORKS:
Upper Magazine Street, Derry.

Derry Almanac, 1901

Archive Images



Bishop Street, circa 1890



Diamond, 1901



Address	5 Bishop Street
Name	Alma House
Map Reference	24
Plot Number	32
Listed Building Reference Grade	No N/A N/A
Conservation Area Reference	Yes Historic City
Building at Risk Reference	No N/A
Date of Construction	
Original Use	Retail
Present Use	Retail

Description

Three-storey, four bay smooth rendered façade. Replacement casement windows with top hung opening light. Contemporary shopfront and side entrance door. Slate roof with 2No.rooflights. Chimneys removed.

Owners/Tenants

5 Bishop Street

1738	James Cowden
1827	Mr Stoyte
1832-1834	John Barber
1858	James Dickson, Samuel Entrican, Thomas Reburn
1874-1889	Andrew Reid
1892	Thomas Lipton, Mrs McConnell, Mrs Gilmour
1894	Thomas Lipton, Mrs McConnell
1897	Church of Ireland, Working Mans Club, T.Lipton
1901-1903	Church of Ireland, Working Mans Club, Lipton Ltd
1905-1941	Lipton Ltd
1953	Mrs Eileen, M.Harris, Lipton Ltd
2001-2006	LPC Stationery

Derry Almanac

Archive Articles

OPENING OF LIPTON'S MARKET.

This provision emporium was opened yesterday in the Alma House premises, secured by Mr. Lipton, in Bishop-street. The shop has been admirably fitted up for the purpose by Messrs. Colhoun Bros. There are marble counters and tables, and great ranges of shelving containing tons of cheese, bacon, butter, shortbread, cakes, and other provisions, everything being got up and arranged in the most attractive style. Mr. Lipton, who has simultaneously opened a market in Dublin, has now over seventy establishments throughout the three kingdoms, besides tea-estates in Ceylon and a bakery in Glasgow. It may be of local interest to know that practically the first step in this gigantic business was taken by Mr. Lipton in Derry not very long ago. He is a North of Ireland man, his father having been a farmer in the neighbourhood of Bunickillen. The elder Lipton was a man of great size and strength, standing over six feet two inches, and built proportionately. In the bad times he sold his farm and went to Glasgow, where he engaged in a small way in the provision trade. Young Lipton went out to America, but did not remain long. One morning less than twenty years ago he landed on Derry Quay with all his savings in his pocket—£10. He visited the establishment of Mr. Henry Lecky and stated his intention to start in business on his own account in Glasgow. For this purpose he wanted a certain quantity of provisions, to the value of £20. He asked Mr. Lecky to trust him the half of the amount, and this was readily done. The same evening the young man crossed over to Glasgow with the goods, which may be regarded as having laid the foundations of his fortune. He is about forty years of age. There is, therefore, something of romantic interest in Lipton's connection with Derry, which has now assumed a new phase. Yesterday morning, from an early hour, the market attracted great attention, and a big business was done.

The Londonderry Sentinel, 20 Dec 1890

NOW OPEN.
LIPTON'S
 GARA
TEA, BUTTER, & HAM MARKET,
 AT
ALMA HOUSE,
 BISHOP-STREET, LONDONDERRY.

These Premises, which have been specially reconstructed and magnificently fitted up as a "LIPTON'S MARKET,"

Have been Opened with the Largest, Freshest, and Best Selected Stock of
TEA AND PROVISIONS,
 At the Lowest Prices ever offered to the Londonderry Public.

Note the Value offering:—
HAMS. HAMS.

THOUSANDS UPON THOUSANDS to select from. Used by the First Families in the Kingdom, and supplied to all the principal Hotels and Restaurants.

FINEST IN EUROPE. PALE AND SMOKED.
 From 5¹/₂d to 6¹/₂d per Lb.
 No matter if you pay double the money you cannot get better. Since Noah took "Ham" into the Ark such prices have never been recorded.

BACON. BACON.
 SHIPLOADS of the Finest Quality, cut from Pigs carefully selected by my own men, and cured in my own Establishments, well dried, fresh and lean, pale smoked, rolled, sides, and in cuts, from
 4d per Lb.

This is about half the price charged for the same quality elsewhere.
 Finest WILTSHIRE CUT BACON at about 8d per lb. cheaper than the same quality is sold at in other Establishments.

The SECRET how LIPTON can sell Hams and Bacon cheaper than any competitor is:—All he sells is his own killing and curing; Customers buying from him save all Middlemen's profits and get a much superior article.

BEEF HAMS.

Of these I sell more than the whole Trade put together.
 FINEST OX BEEF .. 6d PER LB.
 COOKED .. 5d PER LB.

They are a perfect treat, and no house should be without them.
 Don't forget to try my
WORLD-FAMED BEEF HAMS,
 All my Own Cure.

BUTTER. BUTTER.

Tons upon Tons of the Choicest Quality, selected by my own Buyers from the Finest Dairies in the Best Butter-making Districts in Ireland.

It is a well-known fact that there is not finer Butter made in the World than what is made in Ireland; but those who prefer Continental Butters can have the Cream of Danish Butter.

If you want the Richest and Highest Class Butter the World produces, you must go to LIPTON'S.
 Note the Prices:—
 From 10d per Lb.

SPECIAL NOTICE—All my BUTTER is Warranted ABSOLUTELY PURE.
MARGARINE. MARGARINE.

Instead of common or low grades of Butter sold by other dealers, I strongly recommend my Special Margarine. It is undeniably the finest ever offered to the Public. Thousands of Customers daily using it can testify that there is no Margarine to equal it.
 This Extra Choice Quality can only be had at

LIPTON'S BRANCHES,
 Prices, 6d, 7d, and 8d per Lb.
CHEESE. CHEESE.

Prize Lots, from the Principal Shows in Britain, from Also all kinds of FANCY CHEESE at Extraordinary Low Prices.
 4¹/₂d per Lb.

SAUSAGES. SAUSAGES.
 No need now to pay 9d and 10d per lb. for Cambridge and Oxford Sausages, when you can get the finest in the country fresh every morning at LIPTON'S for

7d per Lb.,
 Or in quantities of 5lbs, 6¹/₂d per lb.
 These Sausages are a perfect treat. No house should be without them. They are made under the public eye, from the finest quality of home-fed meat that experience can select or money buy.

LUNCHEON SAUSAGES,
 4¹/₂d per Lb.

EXTRA CHOICEST CEYLON AND INDIAN BLEND.
 1/7 per Lb.

This is the Finest and Most Delicious Tea the World can produce, and is equal, if not superior, to what is sold by most Tea Dealers and Grocers at 2s 6d to 3s 6d per lb.

5, 7, 10, and 20 lbs. Packed in Patent Air-tight Canisters, without extra charge.

Why pay the extortionate prices that are now being charged by the Trade, when you can buy the Finest Quality Absolutely Pure Tea at about half the money at LIPTON'S MARKETS.

SUGAR! SUGAR! SUGAR!
 FINEST QUALITIES AT REFINERS' PRICES.

LIPTON,
 THE LARGEST TEA AND PROVISION DEALER IN THE WORLD.

LONDONDERRY BRANCH—ALMA HOUSE, BISHOP-STREET.
 TEA SHIPPING WAREHOUSES—Maddama Mills, Cinnamon Gardens, Colombo.

CEYLON OFFICES—Upper Chatham street, Colombo. TEA SALES ROOMS—27, Mining-lane, London, E.C. WHOLESALE TEA-BLENDS AND DUTY-FREE STORES—203, Old-street, London, E.C.

PROVISION AND EXPORT STORES—Belfast, Liverpool, and Glasgow.
 Branches in all the principal Towns in the Kingdom.

Buyers in all the best Markets.
 The wonderful success of LIPTON'S MARKETS is the Choice, Fresh Quality of the Goods, and the remarkably Low Prices.—(Vide the public Press) 788

HATS AND CAPS,
 AT HALF PRICE.

TRY
CHASE & CO.'S,
 Diamond, Derry. 523

[THIS DAY.]
LONDONDERRY ACADEMICAL INSTITUTION.

The Annual Meeting for Distribution of Prizes will be held on TUESDAY, the 23d inst., at TWO o'clock p.m., in the GYMNASIUM, which will be heated.

WILLIAM TILLIE, Esq., D.L., will preside.
 [THIS EVENING.]
 LONDONDERRY

POULTRY, PIGEON, AND CAGE-BIRD SHOW.

ENTRIES for the Third Annual Show close This Day (TUESDAY), the 23d.
 The Secretary will attend at his Office, No. 5 CASTLE-STREET, This Evening, from Seven to Nine p.m., to receive Entries and enrol Members. 178

[THIS EVENING.]
 PUBLIC MEETING.

MR. JAMES A. RENTOUL, LL.D., M.P., will Address a Public Meeting on the Political Situation, in the LECTURE HALL of First Presbyterian Church, BAPHOE, This (TUESDAY) Evening, 23d DECEMBER, 1890, at SEVEN o'clock.

All Unionists are earnestly invited to attend.
 Admission Free.
 Baphoe, 19th December, 1890.

[TO-MORROW.]
BELFAST AND NORTHERN COUNTIES RAILWAY.

LATE MARKET TRAIN TO DUNGIVEN, WEDNESDAY, 24th DECEMBER.
 ON WEDNESDAY, 24th inst., the 6.50 p.m. Train from DERRY will run to DUNGIVEN stopping at Intermediate Stations.

EDWARD J. COTTON,
 General Manager.

THE CHEAPEST

CLOTHING HOUSE IN THE CITY

CHASE & CO.'S,
 Diamond, Derry. 523

MAZAWATTEE, 1/10 PER LB.

MAZAWATTEE, 2/- PER LB.

MAZAWATTEE, 2/4 PER LB.

MAZAWATTEE, 2/10 PER LB.

MAZAWATTEE.

The Londonderry Sentinel, 20 December 1890



Address	3 Bishop Street
Name	None
Map Reference	25
Plot Number	33
Listed Building Reference Grade	No N/A N/A
Conservation Area Reference	Yes Historic City
Building at Risk Reference	No N/A
Date of Construction	
Original Use	Retail
Present Use	Post Office

Description

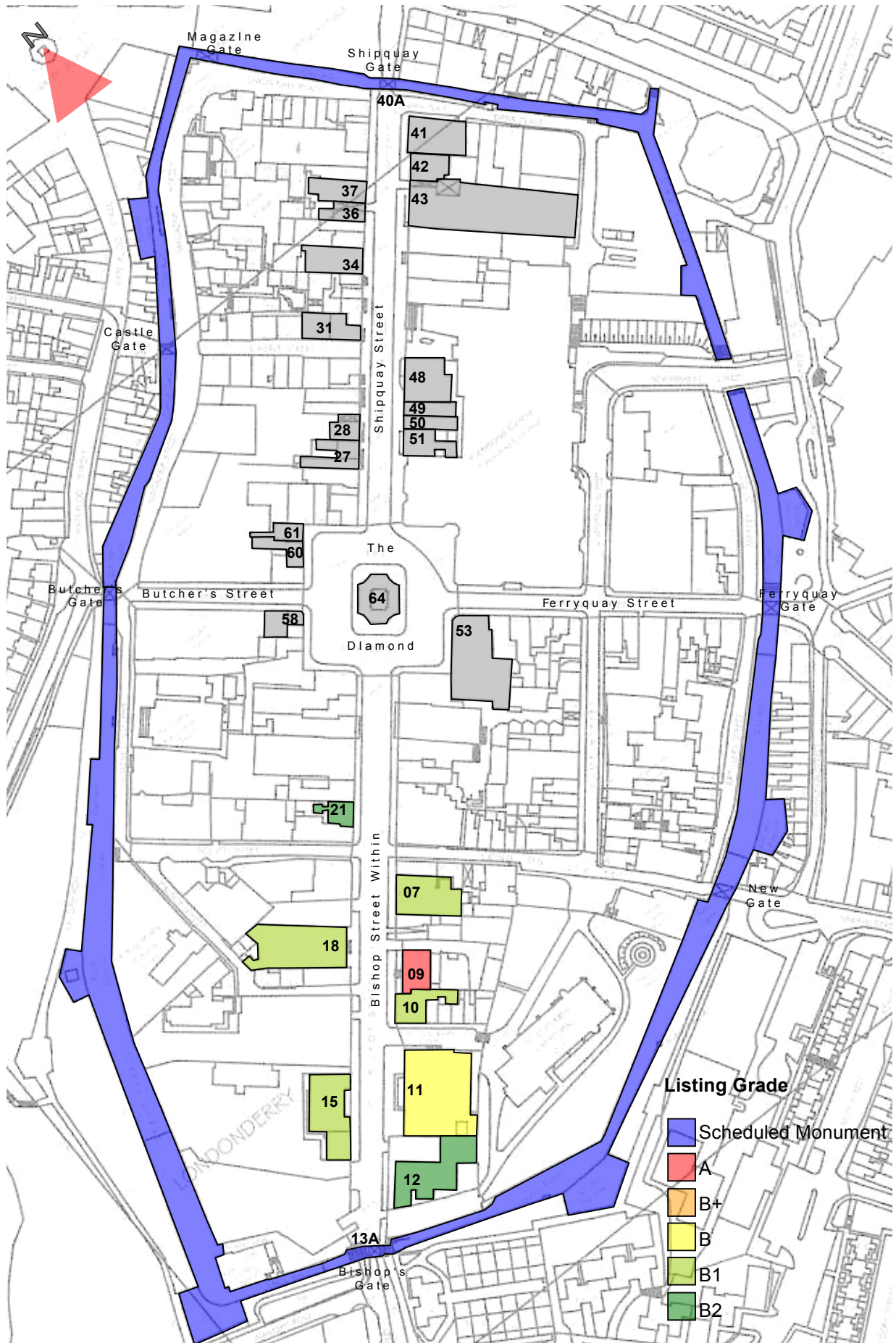
Three-storey, four-bay smooth rendered façade, diminishing scale. Natural slate roof with paired eaves brackets. Six-over-six vertical sliding sash painted timber windows. Contemporary shopfront and signage.

Owners/Tenants

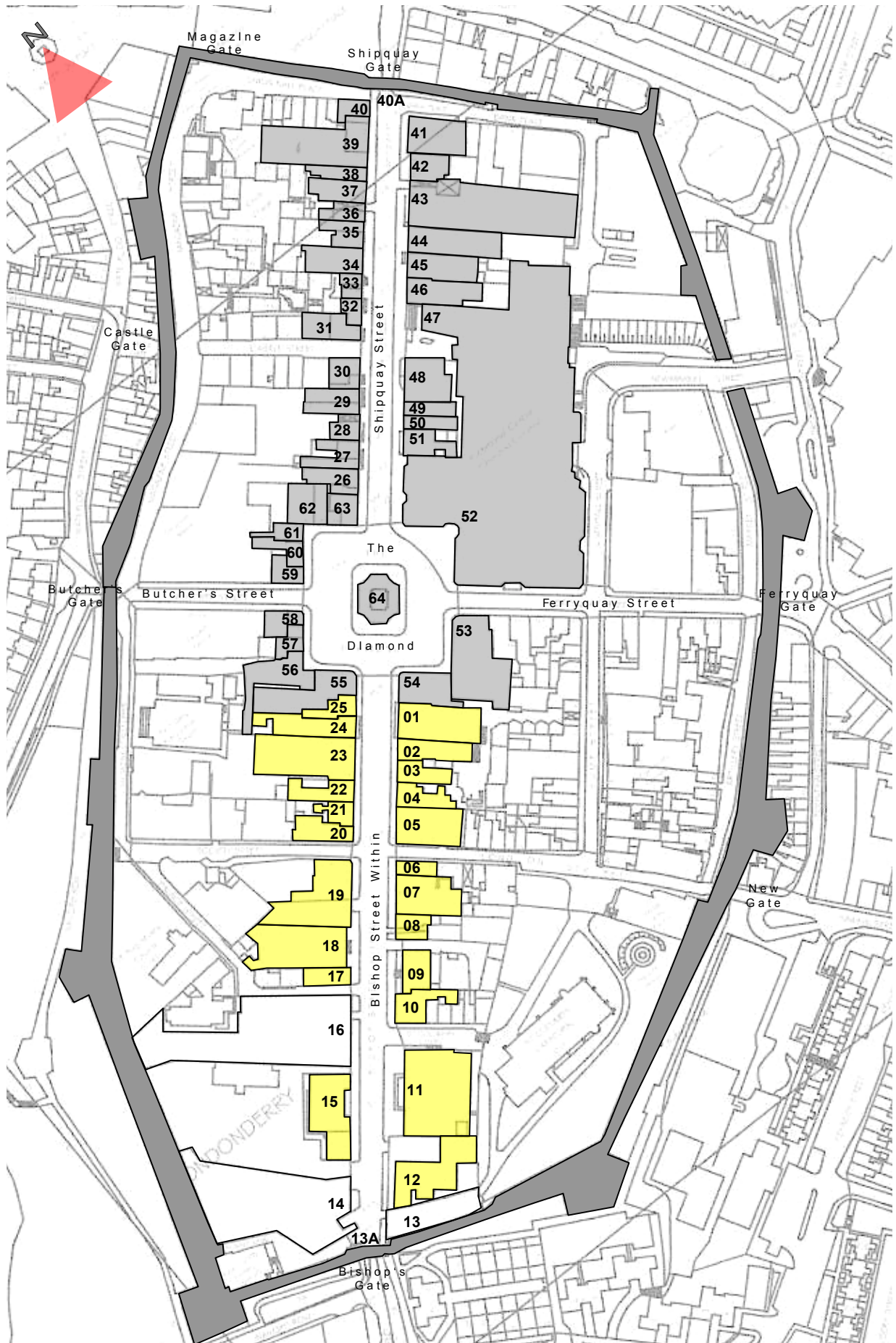
3 Bishop Street

1832	Samuel Walker
1858	George Walker
1884-1903	Mrs Galbraight (Post Office)
1909	M. Galbraight (Post Office), Robert Fulton, Earnest G Harries
2006	Post Office

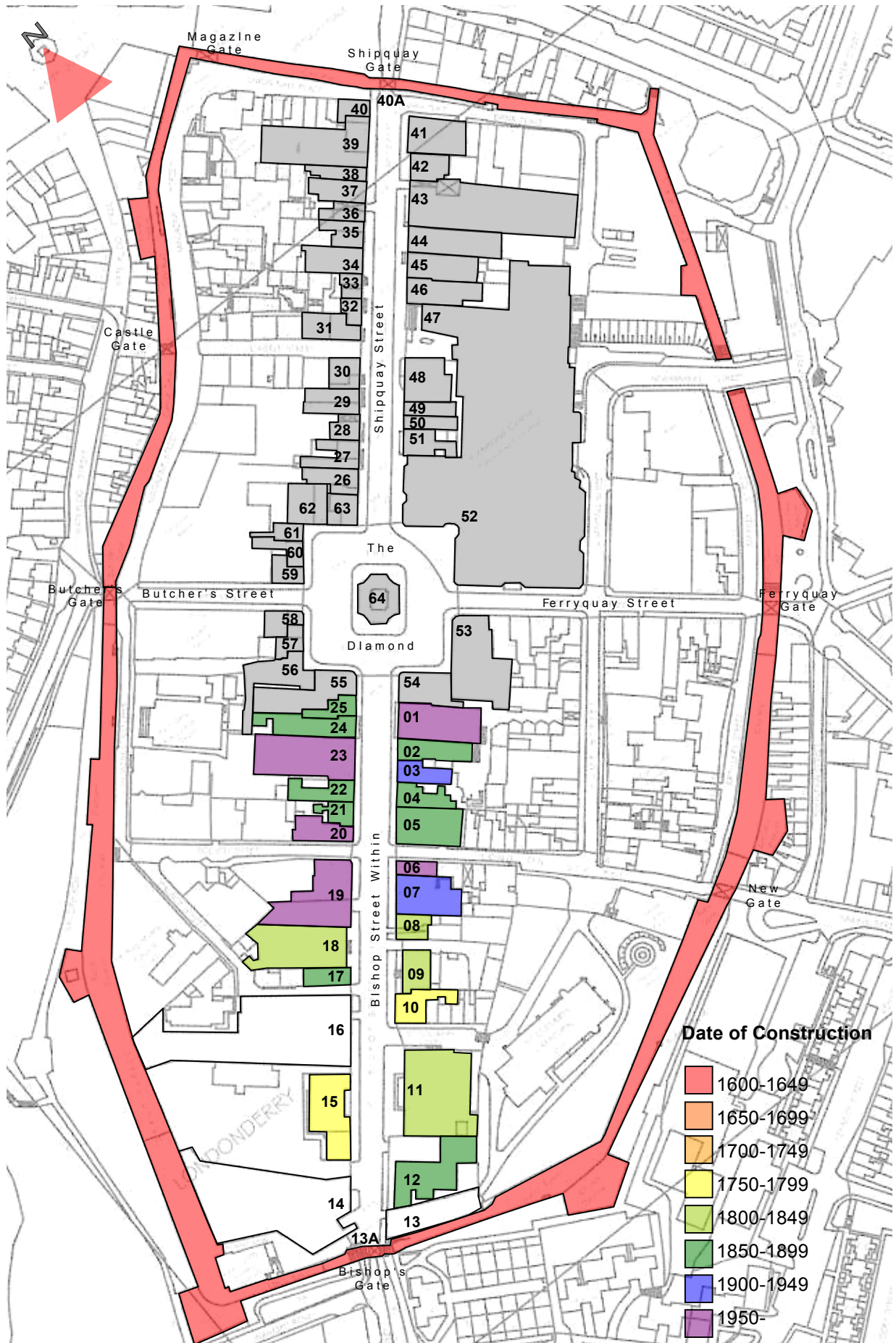
Derry Almanac



Bishop Street Listed Building Map



Bishop Street Reference Map



Bishop Street Date of Construction Map



Name	Bishop Street
Previous Names	Queen Street Bishop Gate Street
Map References	01-25
Plot Numbers	4-19,20,21,24-33,48-54
Listed Buildings Number	Yes 8
Conservation Area Reference	Yes Historic City

General

Bishop Street Within

Before 1780. The Bishop's Palace. The medieval Bishop's Palace was probably on the west side of Palace Street with grounds stretching as far as the later Bishop Street.

The Streets of Derry (1625-2001), John G Bryson, 2001

Queen's Street

1625. Henrietta Maria (1609-69), Henri IV of France's daughter who was married in 1625 to Charles I of England (1600-49)

The Streets of Derry (1625-2001), John G Bryson, 2001

Bishop Street, leading to the high south end of the walled city and to the cathedral, was less concerned with trade. Its development was less compact, with haphazard openings behind the street frontages to the Bishop's house and gardens...By 1788, however the cathedral side of the street from the Diamond to Bishop's Gate had been filled in completely and its gate was in the process of being rebuilt.

The Buildings of Ireland, North West Ulster, Alistair Rowan, 1979

Archive Images



Bishop Street, circa 1850



Bishop Street, circa 1890



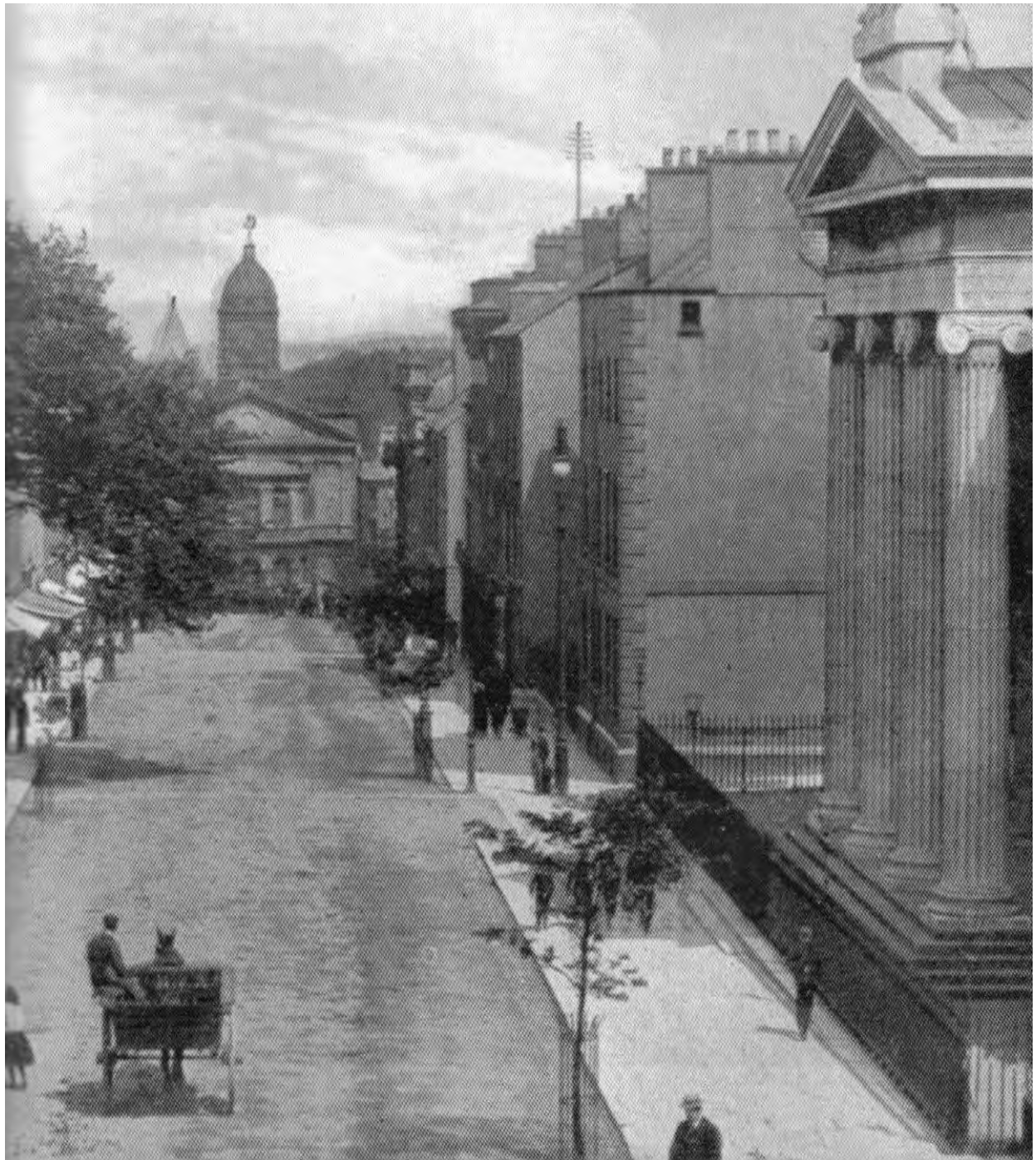
Bishop Street, circa 1890



Bishop Street circa 1890



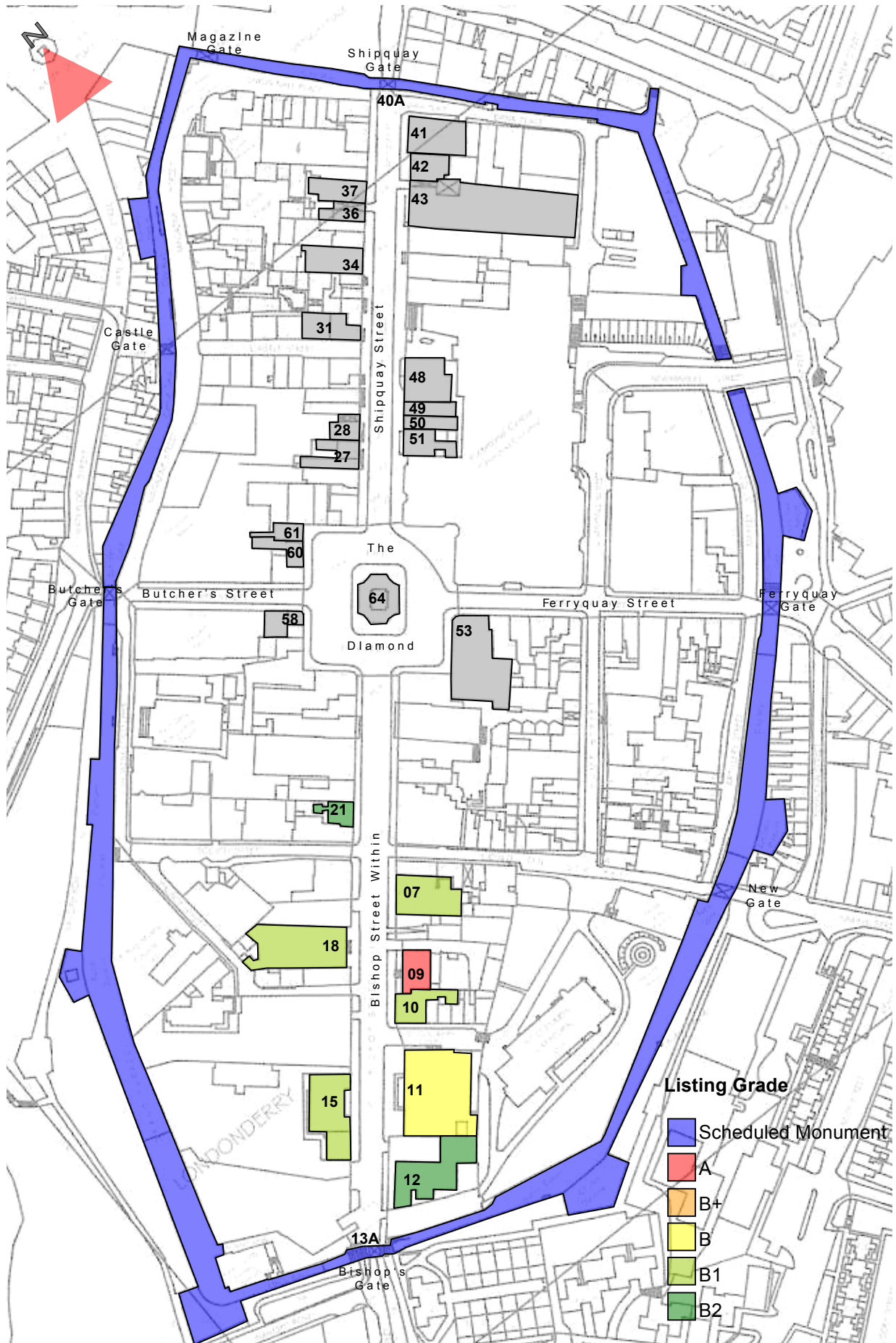
Bishop Street circa 1890



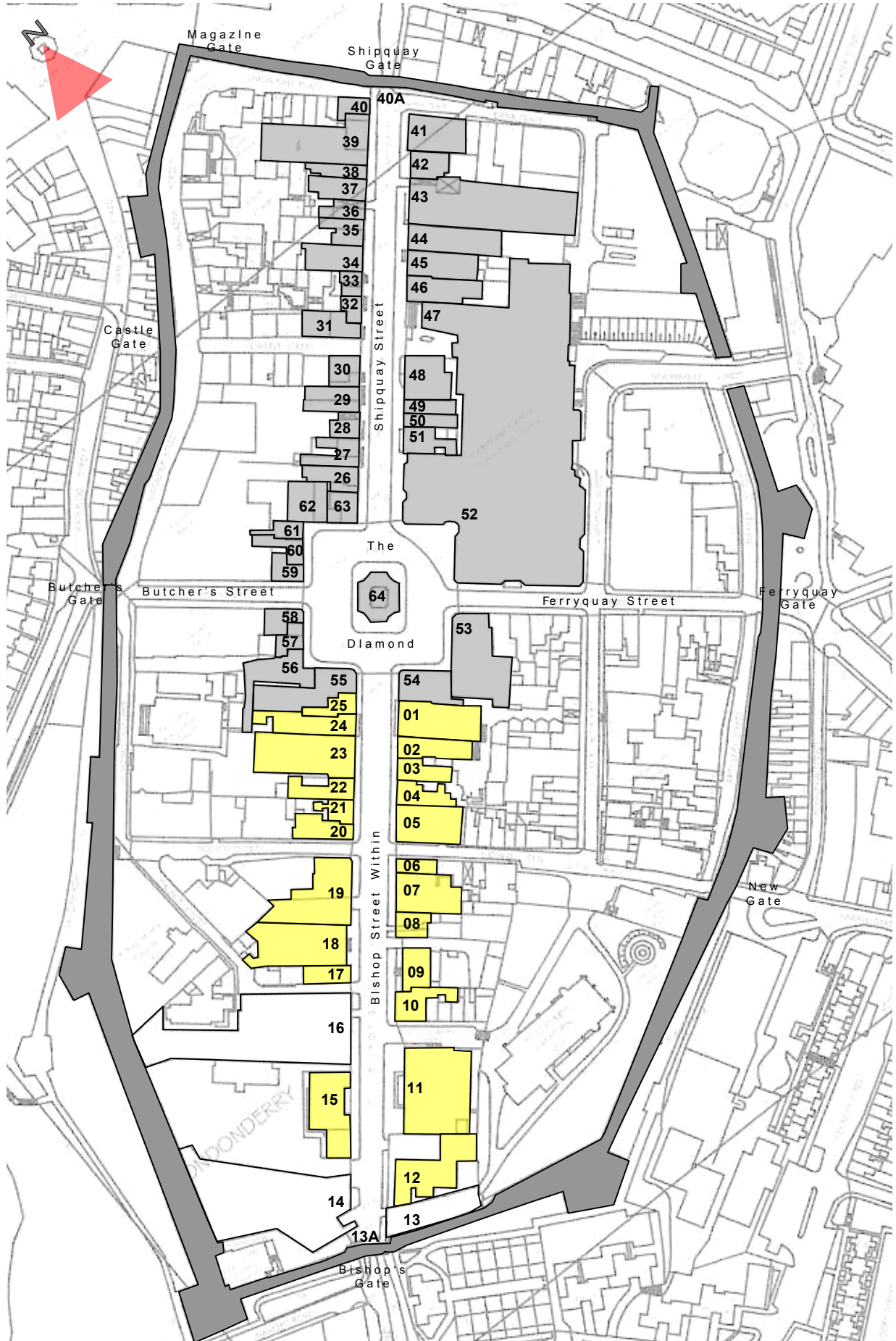
Bishop Street, circa 1900



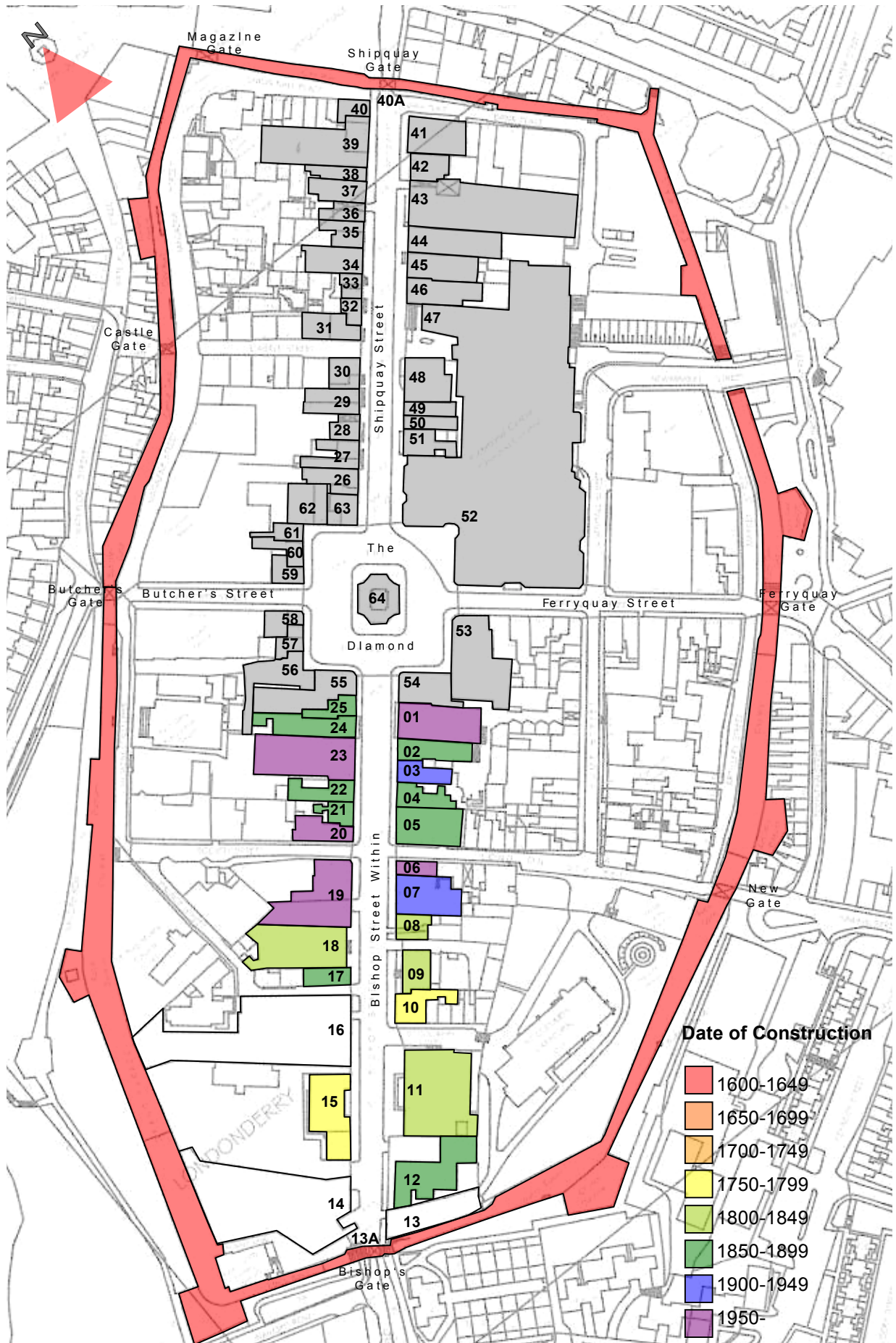
Bishop Street circa 1906



Bishop Street Listed Building Map



Bishop Street Reference Map



Bishop Street Date of Construction Map